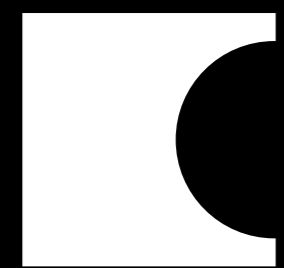
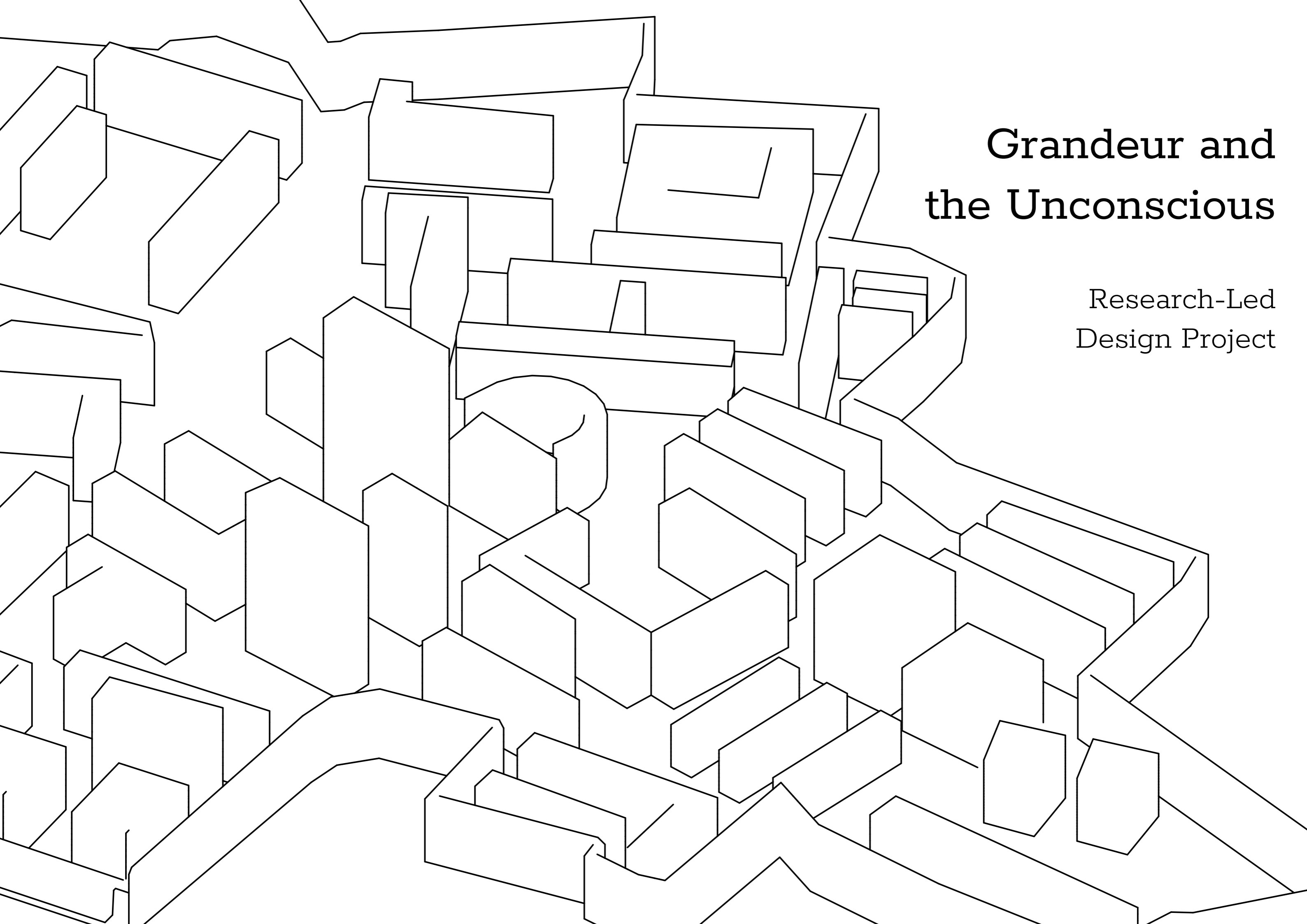

Chenyao Chen - 10035608



Portfolio

Interior Design - Term 3

superFUTURES
15th June 2024



Grandeur and the Unconscious

Research-Led
Design Project

Research Queation

The Unconscious

Based on people's natural responses to information acquisition, what are the possible future societal structures in the world?

Hypothetical "Grandeur"

Time: 2050
World Type: Second World

Project Overview: This project extracts The Barbican in London from the real world as a single subject observed in a virtual future, creating the fictional country of the Republic of Euroapia. It aims to assist in exploring the future possibilities of this world by hypothesizing and deducing the behaviors of individuals with various identities, in an attempt to create a future world subject to reflection.

Introduction: To highlight the primacy of civic activities through simple architectural forms, this project recognizes the negative impact of an overemphasis on human activities combined with the media proliferation driven by technological advancements. This has led to a different kind of environmental pollution—spiritual pollution. The consequences of this may trigger public distrust in superficial media information and a renewed fascination with authoritative sources. The project will conceptualize an internal space within future architecture, exploring new behavioral patterns in people's interaction with media information and propaganda.

Historical timeline



2030

The development of AI and media communication tools has led to another explosion of information



2035

The regions were reorganized, and social theory advanced rapidly



2040

Some countries collapsed



2042

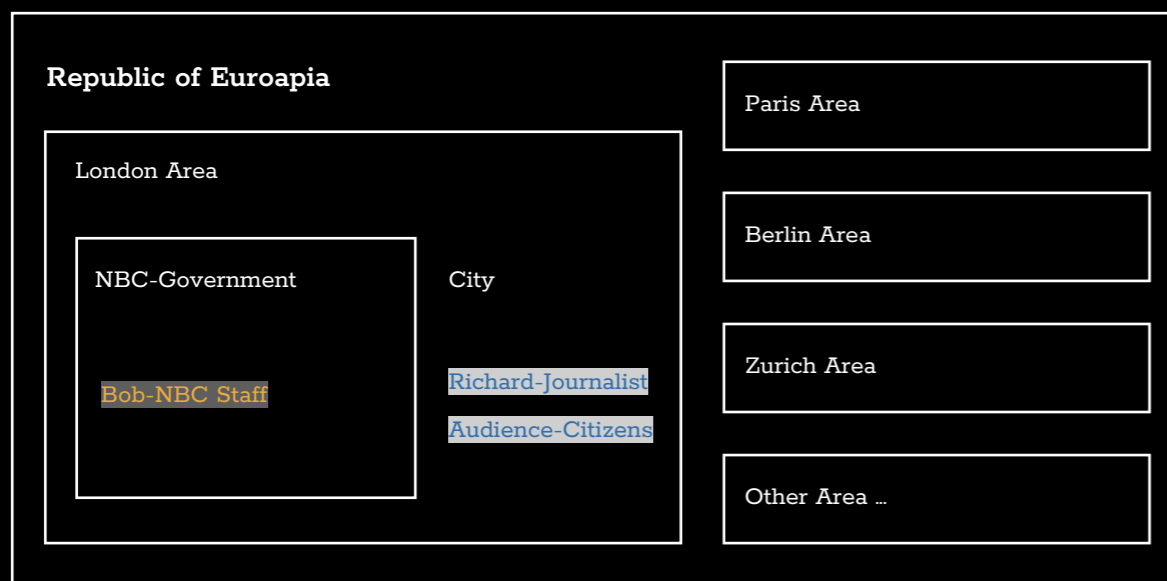
The concept of the state disappeared, and a new pattern of economic autonomy centered on large cities emerged



2050

The centre of London moved to the Barbican, The region has become more stable and efficient

Story Matters Framework



Over a span of 40 years, the European continent witnessed a series of intense political and social upheavals, culminating in the emergence of a nation known as the 'Republic of Euroapia'. This country appears to be governed by a powerful regime, with the overarching state power rooted in a secret base, unknown to the public.

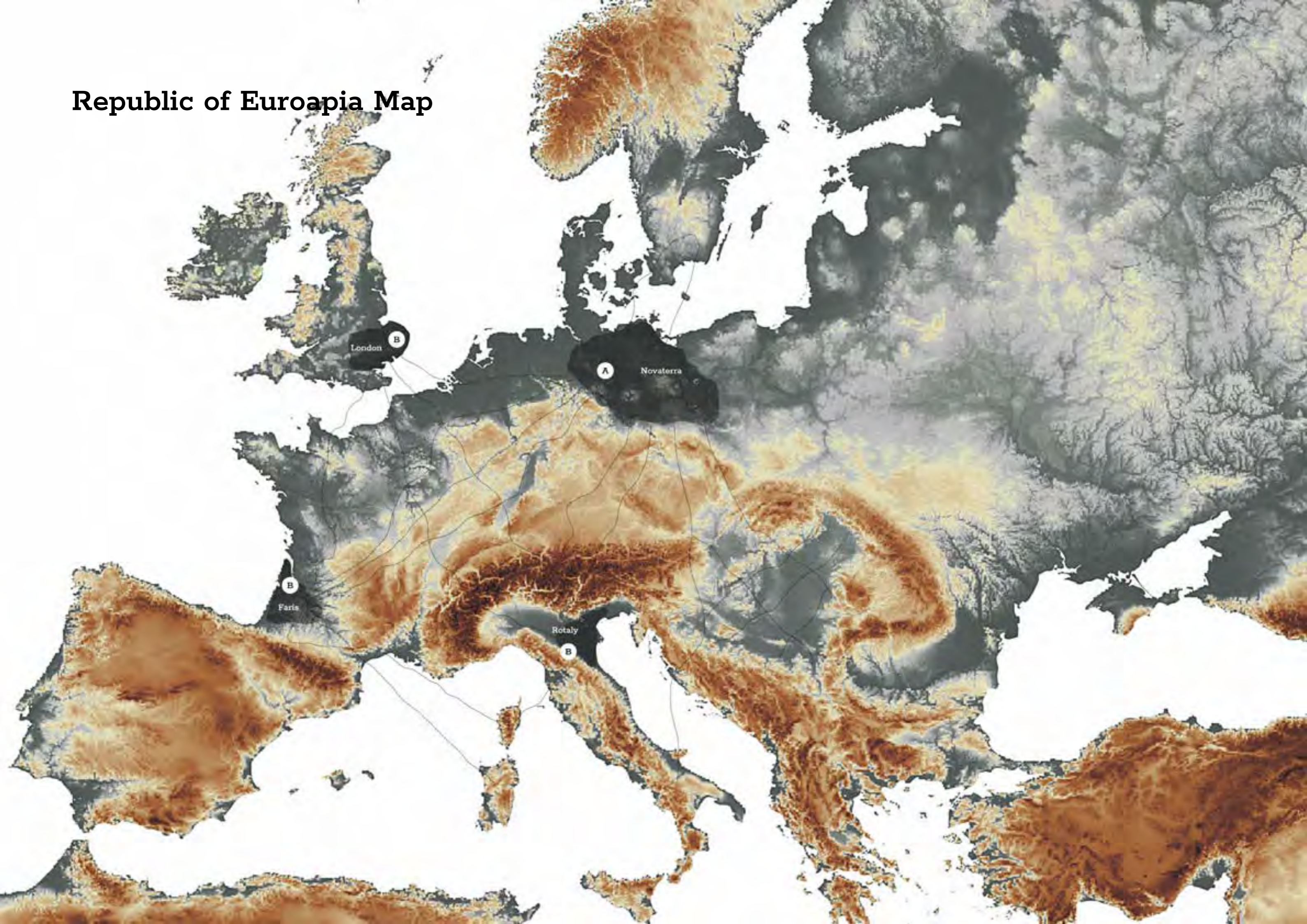
However, the regional governments are merely facades, devoid of any real authority. The nation's primary workforce is composed of inexpensive foreign labor.

The Republic of Euroapia encompasses 15 former European countries including the UK, France, Germany, Italy, etc., forging a new and potent form of union. The traditional national boundaries have been redefined, with mega-cities serving as the administrative hubs of these regions. Each area has its own government.

In this era, Euroapia is in a state of considerable turmoil. The governments of each region seemingly adopt an excessively crude architectural style for their buildings, yet these are surrounded by high walls. This is intended to conceal the indulgent and celebratory atmosphere within the government premises. The so-called 'government' shapes its image of efficiency and rigor through social media and various film and television productions, leading the public to believe that the city's control lies solely with the government.

However, under these circumstances, the citizens' notions of entertainment and leisure rapidly evolve. The urban landscape is continually reshaped by multimedia, leading to the formation of new urban structures. People's perceptions of the cities are largely media-driven, with the media crafting numerous urban centers. The public's enthusiasm for cultural creation reaches unprecedented levels, as creating new media hotspots signifies power and access to more resources in this society. Influence on media easily translates into wealth in this world. People's indifference to political power also reaches new heights, focusing solely on cultural innovation and productivity.

Republic of Euroapia Map



Euroapia - London Area - New Barbican Centre

Energy Field Protective Wall

Luxury Goods Showroom

NBC Government Theater

Building zero

Democracy Promotion Committee

Administrative Center - Fantasy Film Studio

2050-NBC Becomes Euroapia's Officially Certified Seat of Government

NBC Crisis Response Center

Illusion Studio

Historical Records Center - History Rewriting Bureau

Pseudoscience Promotion Center

Accommodation area

Mock Charity Department

"Mad Lab"

"Eternal Party" Department

NBC Cultural Business Complex

Accommodation area

Secret Garden

NBC Government Hotel

Utopia Planning Bureau

NBC City Residents' Life Incident Management Centre

Civic Culture Centre

New Barbican Centre

2040-NBC's prototype range wall

2045-NBC has "full" authority over the city.

About "panopticon"

Brief: The panopticon is a design of institutional building with an inbuilt system of control, originated by the English philosopher and social theorist Jeremy Bentham in the 18th century. The concept is to allow all prisoners of an institution to be observed by a single corrections officer, without the inmates knowing whether or not they are being watched.

Structure and Components of the Panopticon

Central Observation Tower:

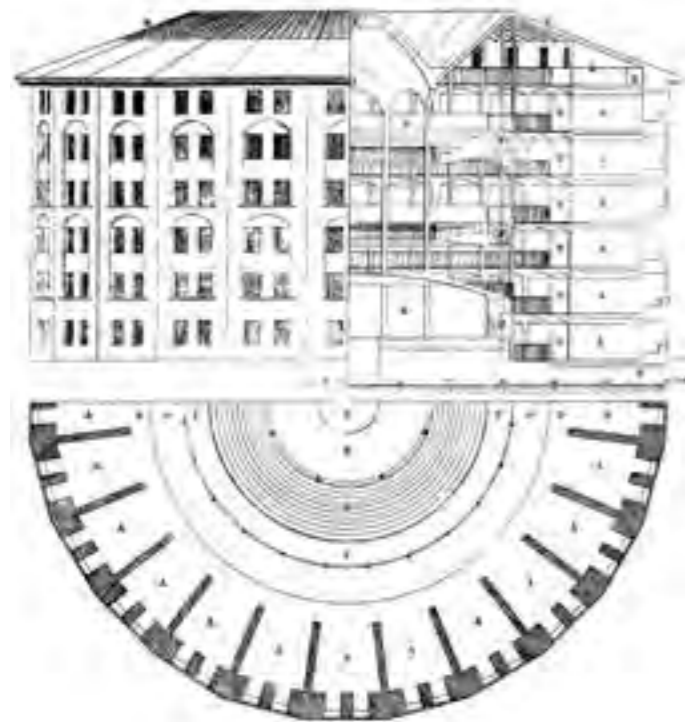
Function: Allows the observer to watch all prisoners without being seen. Typically uses one-way glass or other obstructions to enhance the secrecy of surveillance.

Circular Cell Block:

Function: The cells are arranged around the central tower, each cell facing the tower to ensure that all prisoners are within the line of sight.

Perimeter Wall:

Function: Encircles the entire structure to ensure that the prisoners are completely isolated, preventing outside visibility and interference.



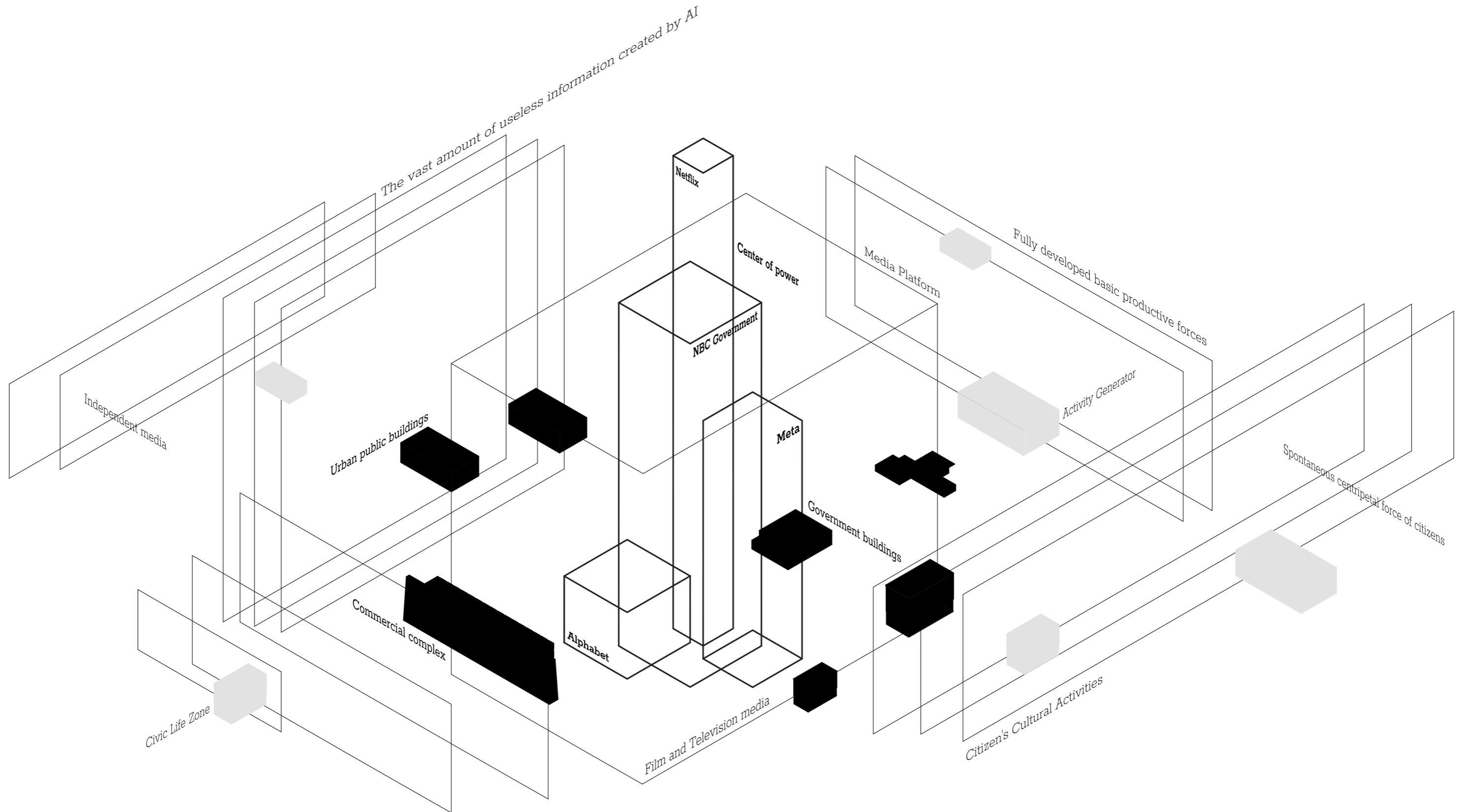
Main character



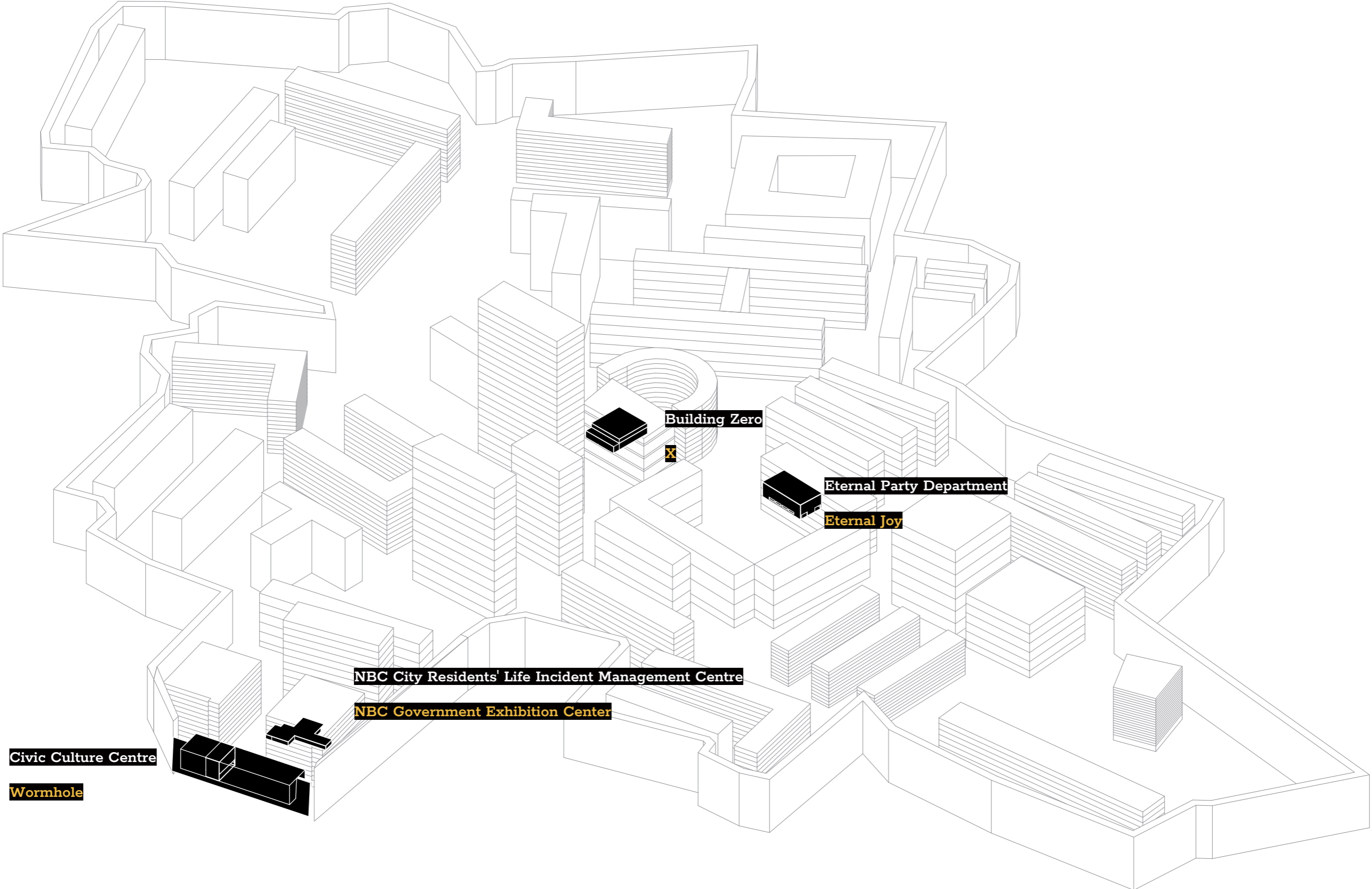
Name: Bob Brown

NBC City' Life Incident Management Centre,
Public Sentiment Handling Officer - Level Three
Main area of work and life: New Barbican Centre Community

Social Construction - Source: Project 0

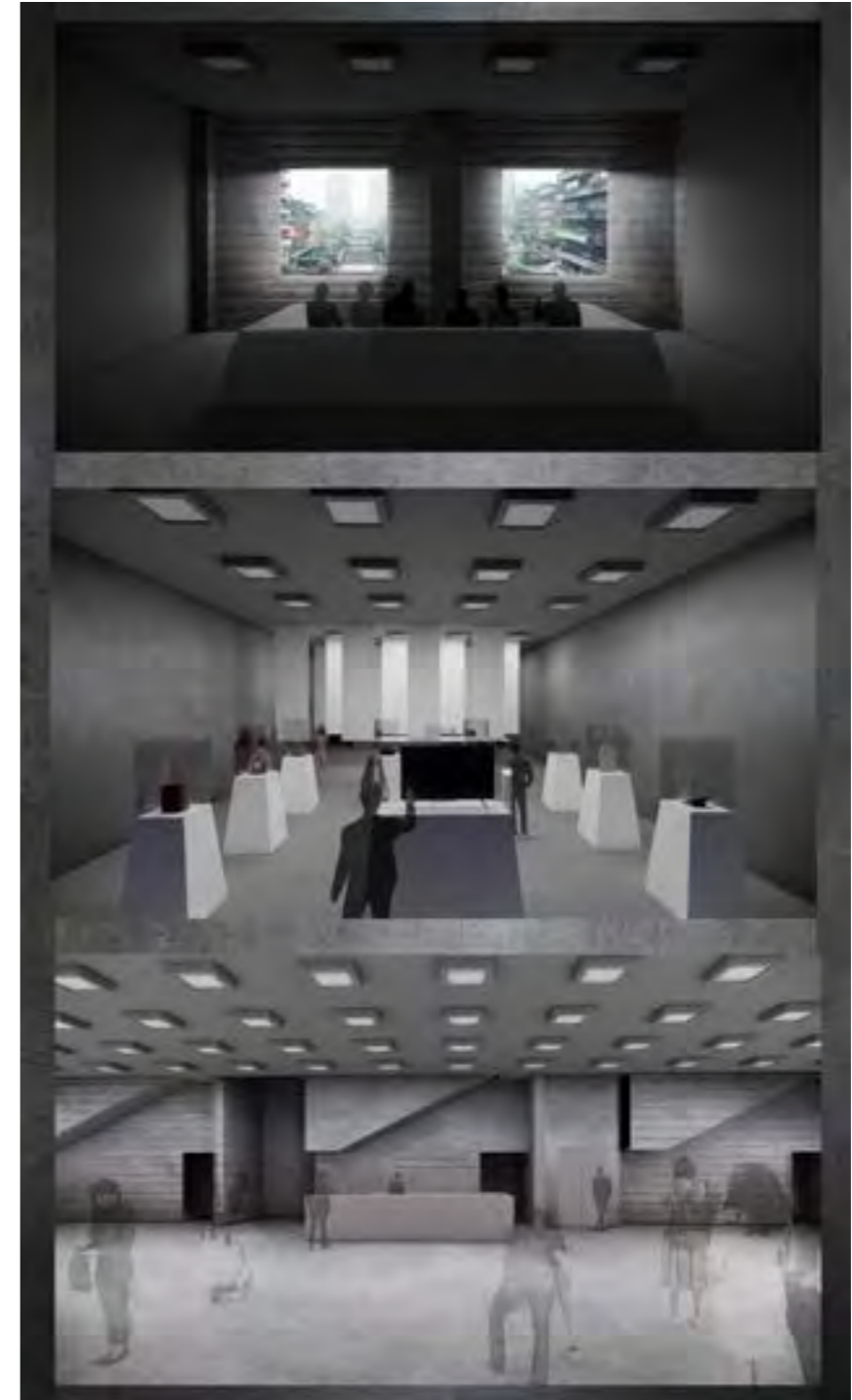
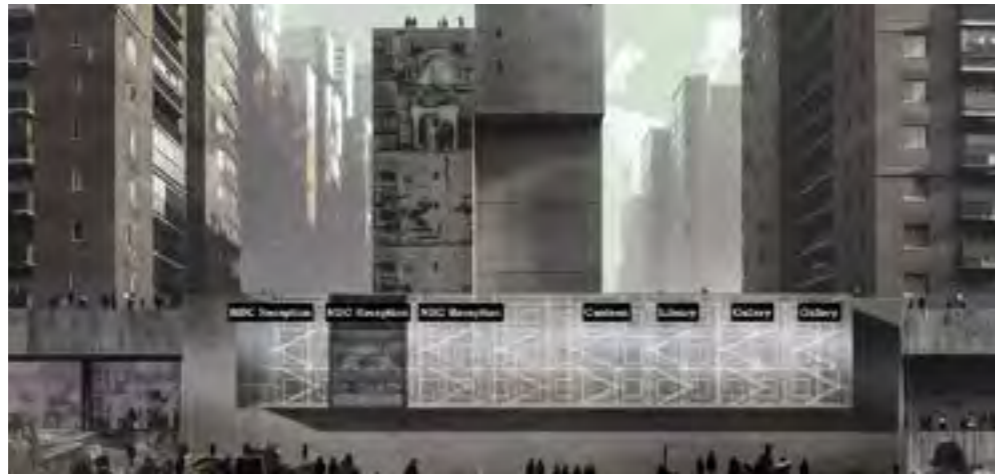


Bird's eye view of NBC - Project 0 in-file map



Outdoor View - Civic Culture Centre





Floor 1 - Public Lobby & Check-in



Floor 2 - Small Museum Space



Floor 2 - View room



NBC City Residents' Life Incident Management Centre - Promotional booths



NBC Citizen Affairs Document Storage Room



NBC City Residents' Life Incident Management Centre - Promotional booths



Film - A moment in Bob's life from a certain day



https://youtu.be/NPQybc1_bi4



Film - A moment in Bob's life from a certain day - Film script

Title: Grandeur and the Unconscious

Brief: The short film primarily depicts snippets of Bob's life as he begins his workday at the New Barbican Centre, and his inadvertent discovery one evening of a document about the true power behind the scenes in Euroapia. The narrative of the short film largely relies on stream-of-consciousness editing techniques.

Scene Heading: Bob's Entrance

Location: INT.

Setting: An indoor location in the Barbican

Time: Day

Description: Bob emerges from a lift, followed by a series of scene transitions including corridors, beside glass windows, and indoor walkways. Throughout his walk, Bob continually adjusts his attire, checks his phone, and greets people around him.

Character: Bob

Dialogue: None

Scene Heading: Bob's Preparation Before Officially Entering the Office

Location: INT.

Setting: In front of a keypad door

Time: Day

Description: Bob stops in front of a keypad door, behind which lies the office. He prepares himself by controlling his expression before pushing the door open and entering his office.

Character: Bob

Dialogue: None

Scene Heading: Bob at Work

Location: INT.

Setting: An office or a similar setting

Time: Day

Description: Bob pretends to work diligently at his desk, but in reality, he is idly flipping through his upcoming free time. His calendar reveals that he only works on Thursdays, as Thursdays are the government's Open Day, allowing citizens to visit specific areas, including Bob's workplace, purely for showcasing a falsely busy day-to-day of government staff.

Character: Bob

Dialogue: None

Scene Heading: Bob Relaxing Outdoors After Morning Work

Location: EXT.

Setting: An architectural overhang in the Barbican (simulating the feeling of standing on a high wall)

Time: Day

Description: Bob stands on the high wall, making a phone call at noon. He numbly observes the busy citizens below, understanding everything he sees but feeling utterly indifferent, as the worlds inside and outside the wall, though seemingly vastly different, are essentially the same.

Character: Bob

Dialogue: None

Scene Heading: Transition Between Bob's Work and Life

Location: INT.

Setting: On Bob's desk

Time: Day/Night

Description: The transition from day to night is achieved through the calendar on the phone or a paper version. The transition of location is completed through the gradual change of cups and beverages, moving the scene to a new, luxurious venue.

Character: Bob

Dialogue: None

Scene Heading: Watching a Government Promotional Video in a Luxurious Setting

Location: INT.

Setting: A corner of a luxurious café

Time: Night

Description: Bob lifts his phone to watch the latest promotional video from the New Barbican Centre about Euroapia and NBC, showcasing "serious" government workers. The camera transitions between wine glasses and the phone screen.

Character: Bob

Dialogue: None

Scene Heading: Bob Finds a Strange Document

Location: INT.

Setting: A corner of a luxurious café

Time: Night

Description: While relaxing and enjoying his time, Bob notices a document with an unfamiliar title on a side table. Upon opening it, he discovers it's a document from the true governing body of Euroapia, puzzled as to why it would appear in this space.

Character: Bob

Dialogue: None

My Bob's office desktop



The notebooks have been spray-painted silver to reflect the raw purity and functionality that are hallmarks of Brutalist architecture. The letter 'B' on the cover stands for Bob's name, serving as a subtle nod to its owner. At first glance, these notebooks appear to be diaries or memo pads Bob uses to document his daily work activities, lending a layer of tangible realism that enhances the perceived professionalism of these fictitious government workers.

Additionally, a small coffee cup, with remnants of coffee left inside, has been employed to set the scene. Bob uses these props to display a fabricated diligence to the public.

I was thinking of using a few objects that might have been common in that era to create a small scene or a collection of items, to depict the activities of the leading role in a certain scenario. Since my story might not include overly high-tech elements, choosing appropriate objects would make the entire narrative seem more realistic.

Project 0 - Bob gave Richard the files and contents of Project 0.



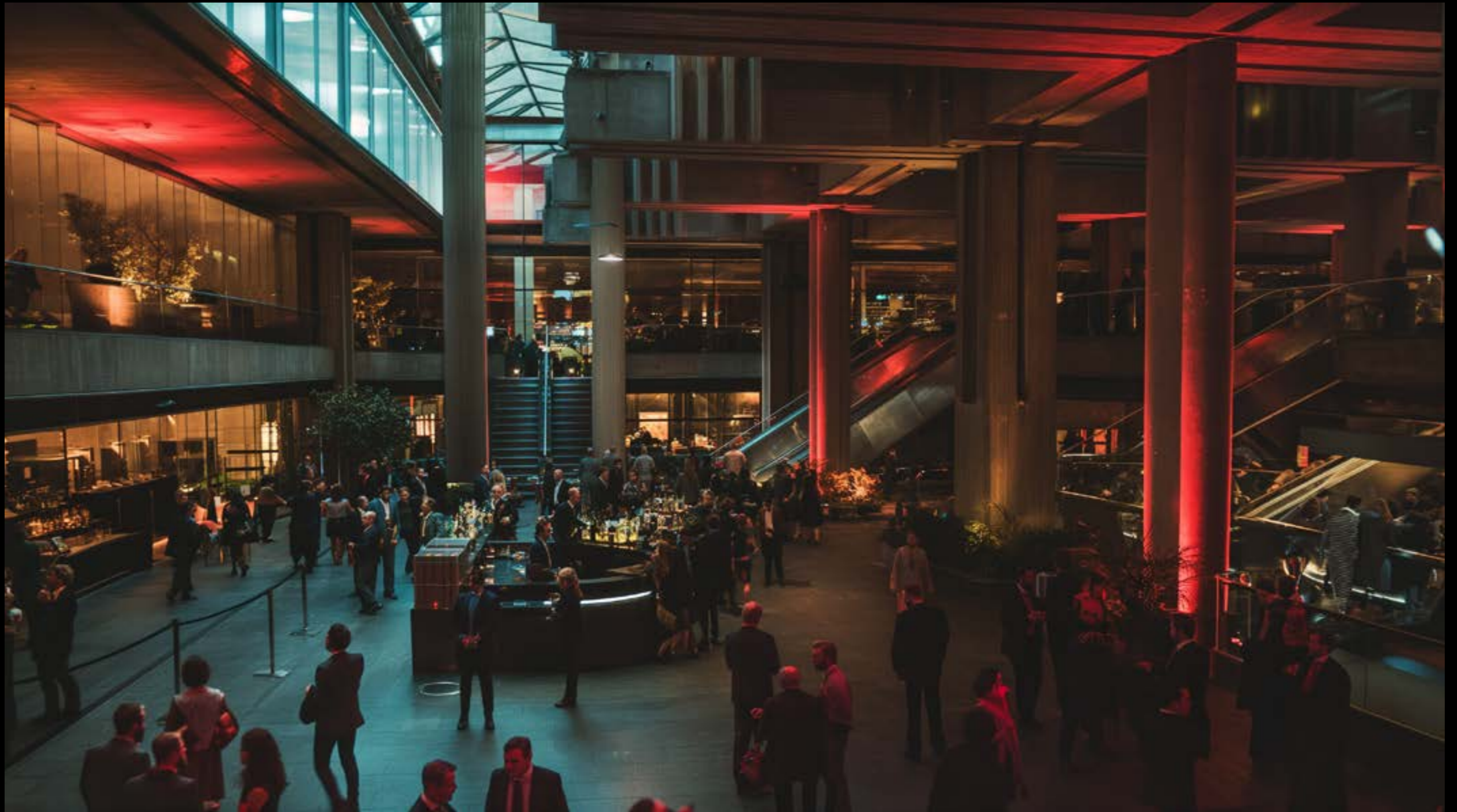
The City Beyond the Walls



Inside view of NBC



A party space.



Material Culture - AI-generated images

The scene of a party



Material Culture - AI-generated images

Building Zero



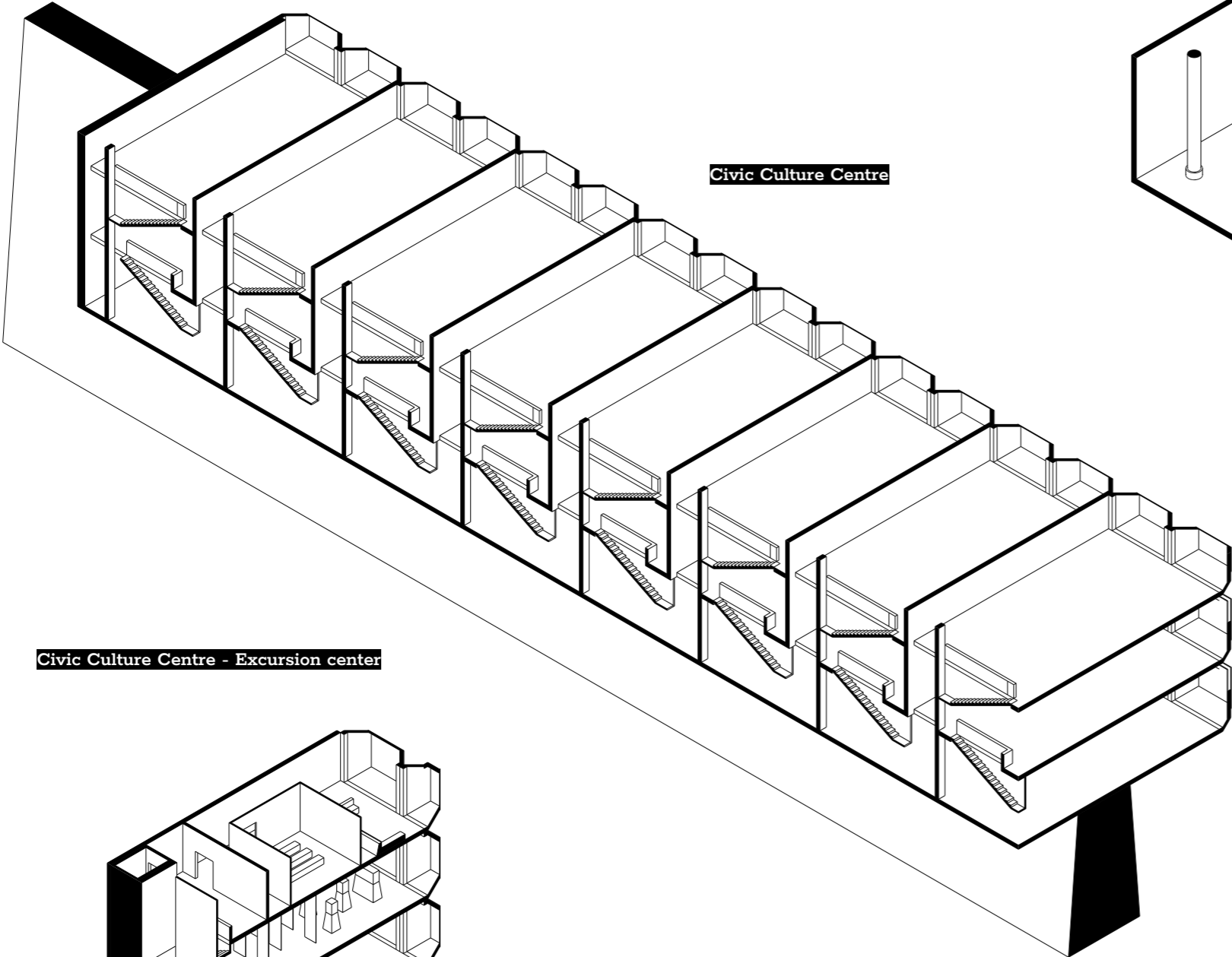
NBC Government Exhibition Centre - Studio for the promotion of work



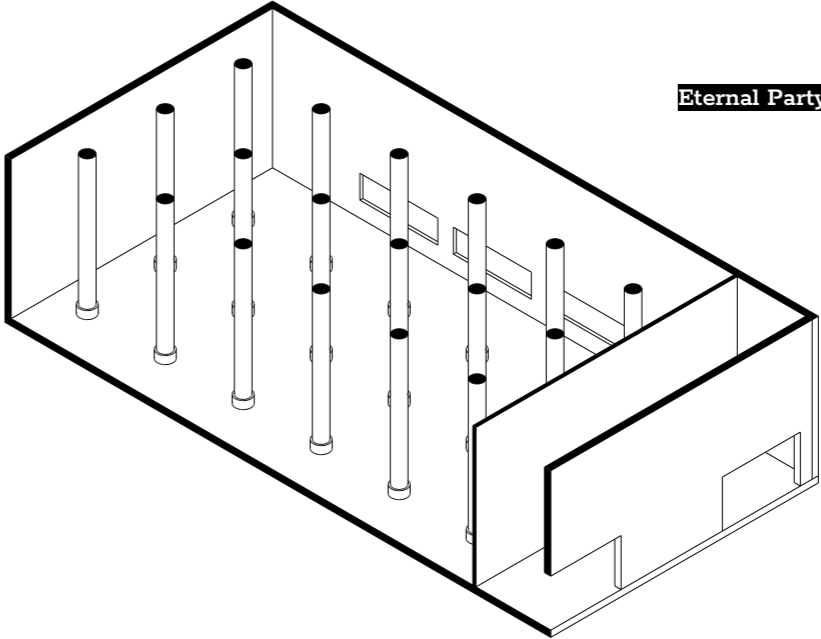
Eternal Joy



Architectural section - Source: Project 0

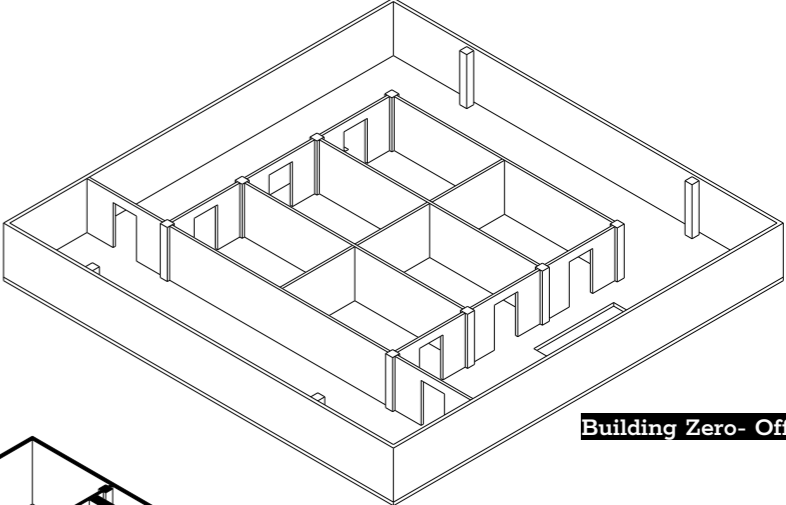
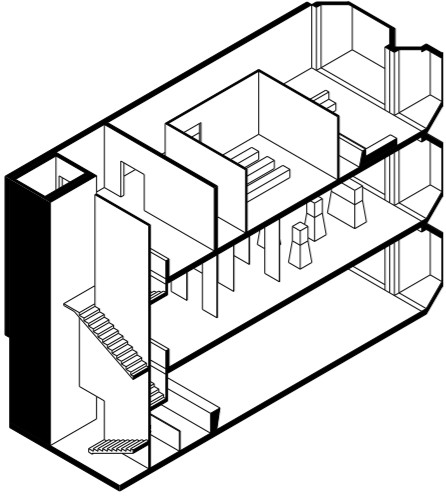


Civic Culture Centre

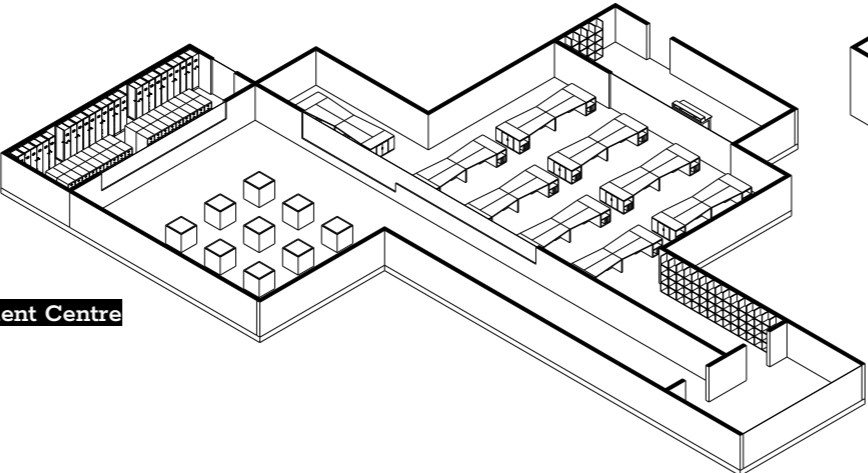


Eternal Party Department

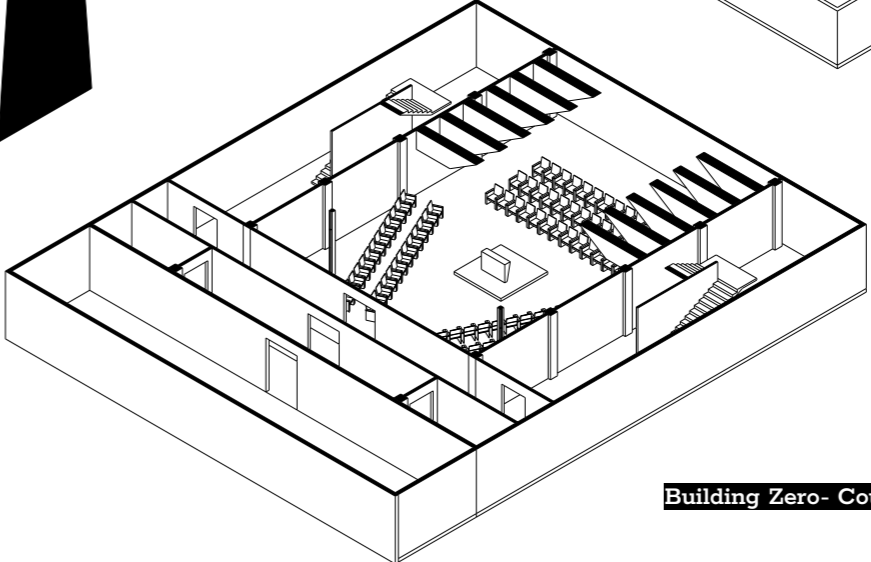
Civic Culture Centre - Excursion center



Building Zero- Office room - F2



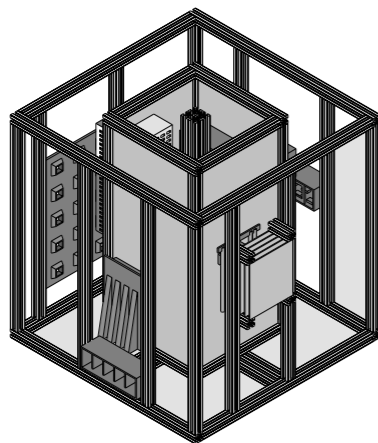
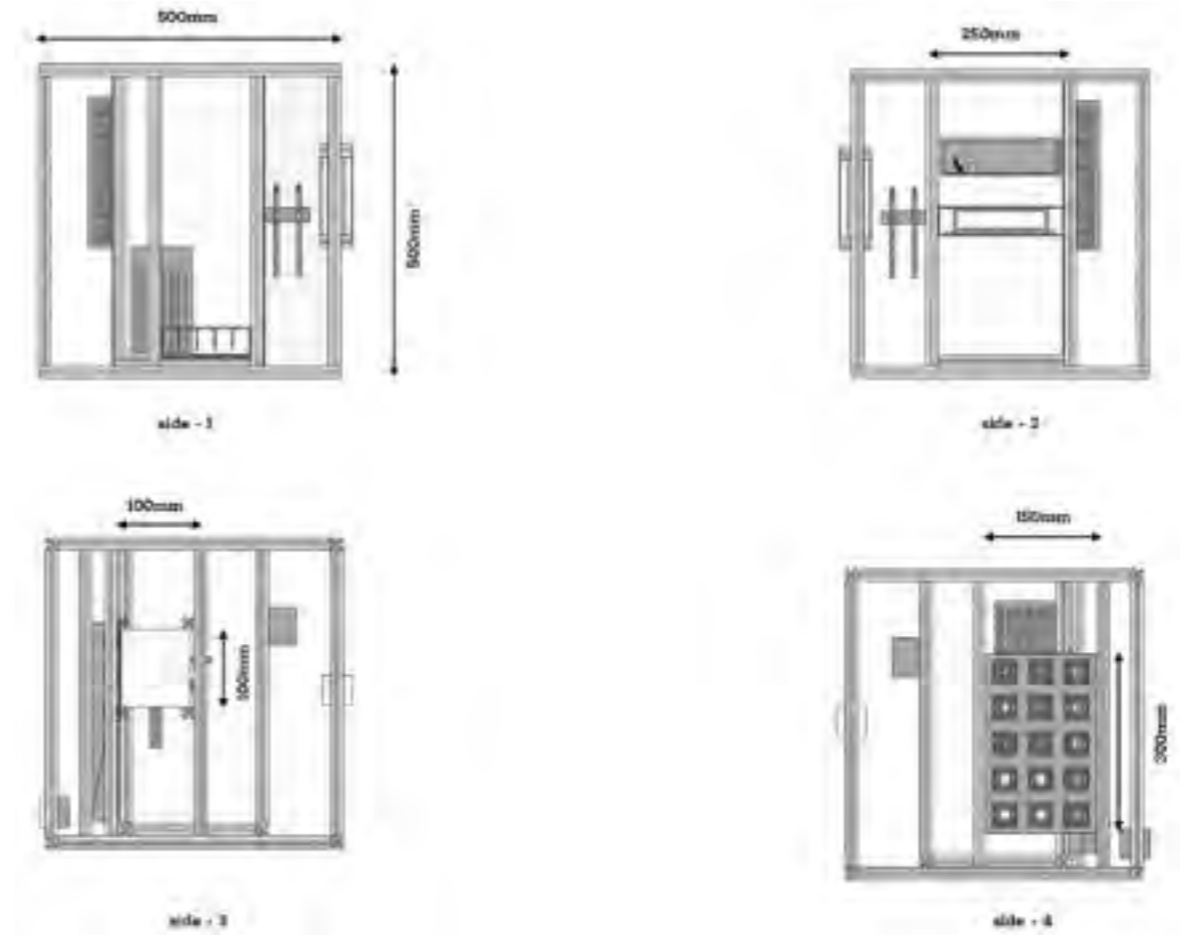
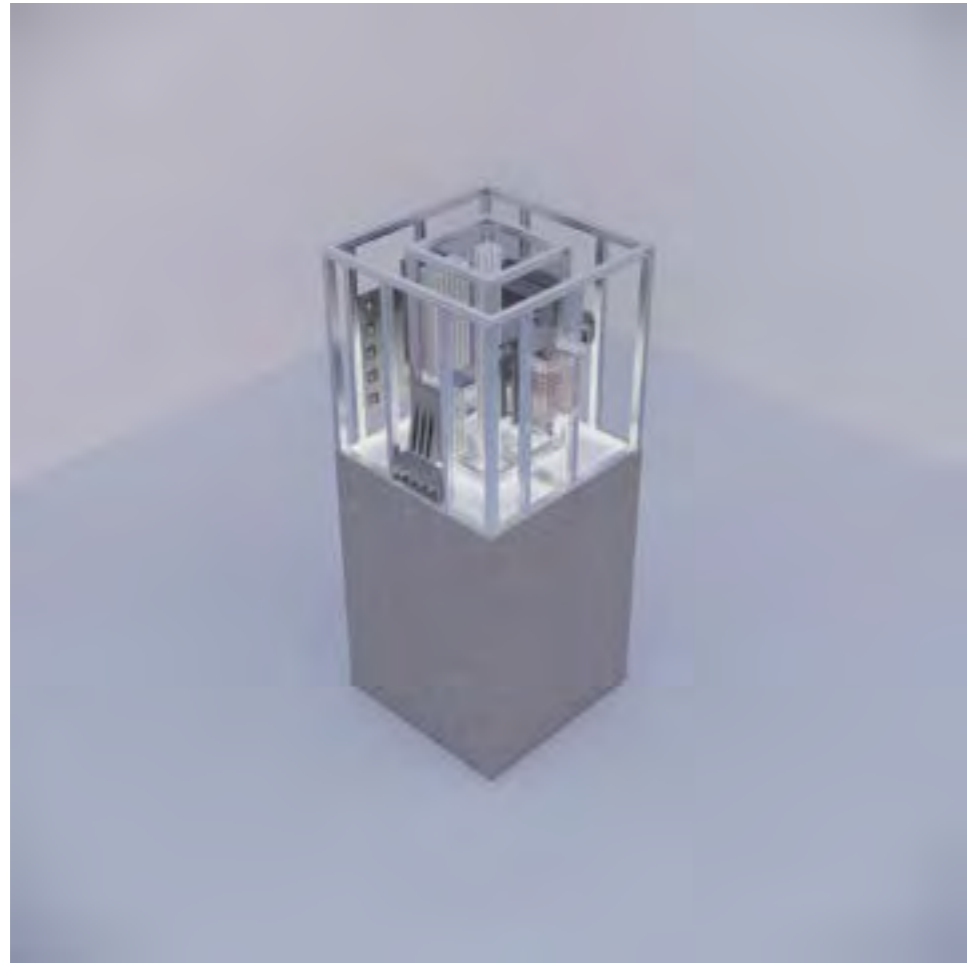
NBC City Residents' Life Incident Management Centre



Building Zero- Council chamber - F1

NBC World Box

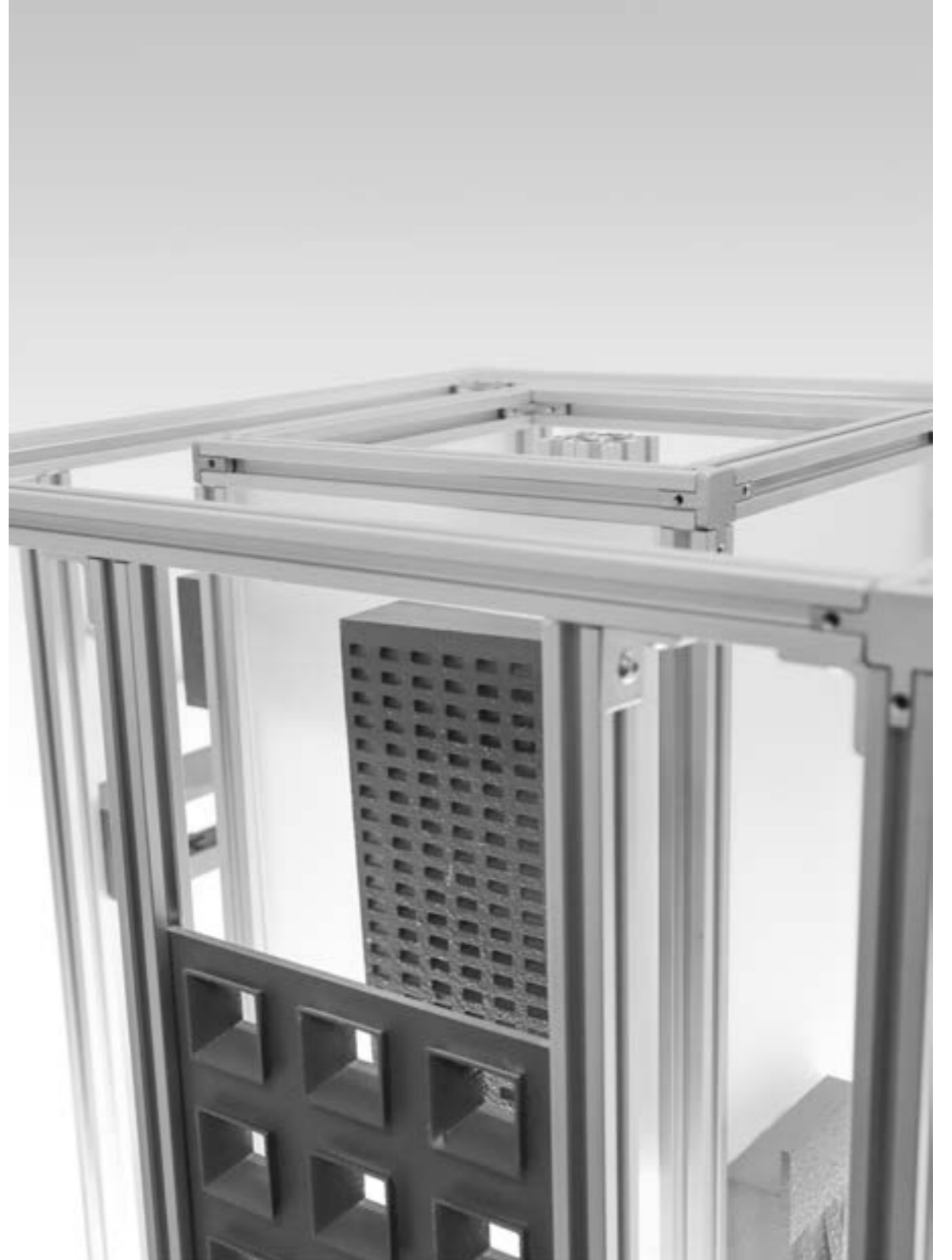
Physical Space Sculpture Installation



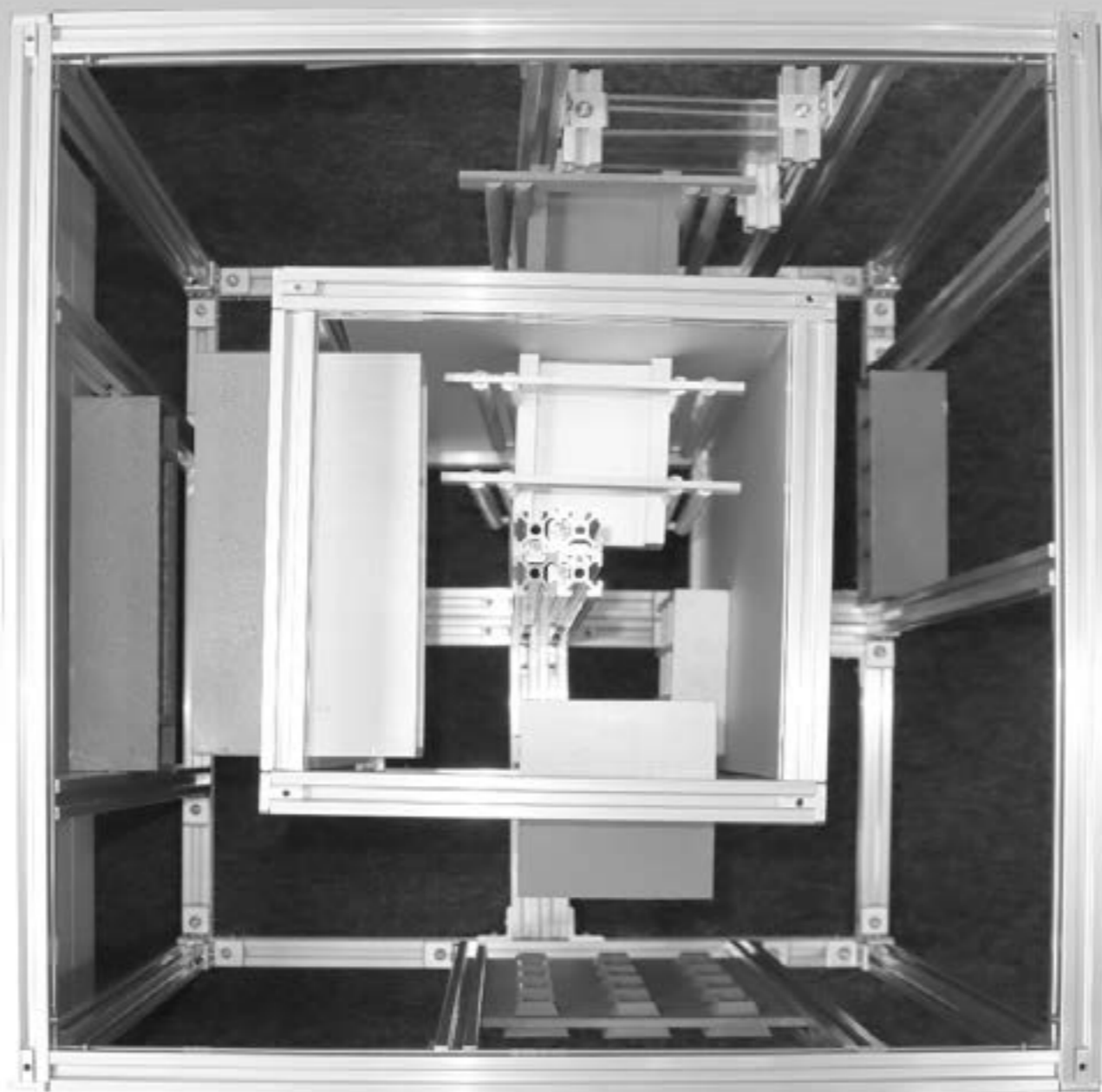
Materials: 3D-print PETG + Texture Paint _cement, Frosted acrylic, Clear acrylic, Transparent acrylic + laser cutting and printing, 2020 Aluminium profile,

Synopsis: The NBC World Box is a physical representation of the worldview of the NBC world, and a prototype model designed by the secret government in charge of Euroapia at the beginning of its social structure.









“Are we just a cog in the grand machinery? What exactly are we helping to stabilize? Has the entire program of society already been set?”

Thanks to all the teachers, classmates, friends and family who have helped with the program throughout.

List of thanks -RCA: Gemma Barton, Pierre Shaw, Gaetano Drago, Pascal Anson, Graeme Brooker, Amelia Jane Hankin, Aiduo Xiao, Jiayi Guo, Xuhao Miao, Dong Ho Cho, Lifeng Liao, all superFUTURES students(2023-2024), all faculty and staff in the School of Architecture...