

The Patchwork table

The patchwork table

is a community space where peoples in Spitafield share and celebrate their stories through creatives workshops and communal meals, thus preserving Spitafield's collective memory.

1.

Site

2.

Concept of
patchwork

3.

Material
Intelligence

4.

Program

5.

Space

Site



The site is located in Spitafields, east of London, between Shoreditch and the City of London.

At the crossroads of an area of very contemporary buildings and more preserved, authentic Victorian houses.



18 Blossom St, London E1 6PL

When I first visited the site I paid attention to the details of the material and what it could tell us about the place. Some layers were revealed and spoke of past histories, other renovations imitated the past for the sake of preservation, while all these facades and buildings created a great patchwork of elements that were diverse but harmonious in my eyes.



Traces of stories



Preserving through memory



Patchwork of different elements



Sally flood,
Whitechapel 1960

Sally flood is a poet I discovered the first time I researched spitafeld. She lived in Spitafield all her life and is the daughter of immigrants. She worked as a machinist at the time and wrote lots of poems which she always kept hidden. It was only later that she revealed all these writings which speak well of Spitafield and its vibrant atmosphere.

THE BRICK LANE I SEE

Brick Lane is a mixture
Of aromatic spices
Curries, onions and bad drains
Pakistani restaurants
Jewish trimming shops
And betting shops
Down-at-heel workers
And hopeful prostitutes
Cars and vans add to the pollution
With heavy exhaust fumes
Pavements and gutters
Are littered with overspill
From dustbins and shops

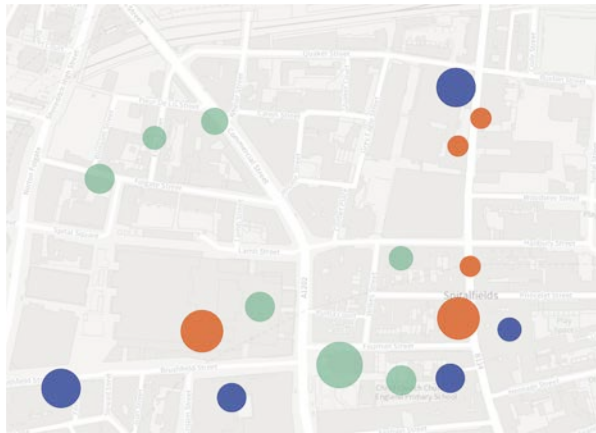
This is where the immigrant
Looks for fulfillment
This is the breeding ground
For discontent
Where the meths drinker mixes
With the down-&-out
Where workers are exploited
And small-time drug peddlers
Sell their dreams
This is where the thug
Dons the crown of King
And bullies thrive
 Where do-gooders
 Salve their consciences
 This is Brick Lane.

THE BRICK LANE I SEE

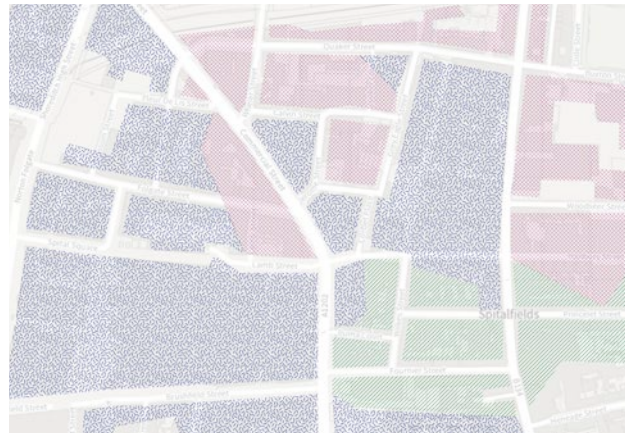
Brick Lane is a mixture
Of aromatic spices
Curries, onions and bad drains
Pakistani restaurants
Jewish trimming shops
And betting shops
Down-at-heel workers
And hopeful prostitutes
Cars and vans add to the pollution
With heavy exhaust fumes
Pavements and gutters
Are littered with overspill
From dustbins and shops

This is where the immigrant
Looks for fulfillment
This is the breeding ground
For discontent
Where the meths drinker mixes
With the down-&-out
Where workers are exploited
And small-time drug peddlers
Sell their dreams
This is where the thug
Dons the crown of King
And bullies thrive
Where do-gooders
Salve their consciences
This is Brick Lane.

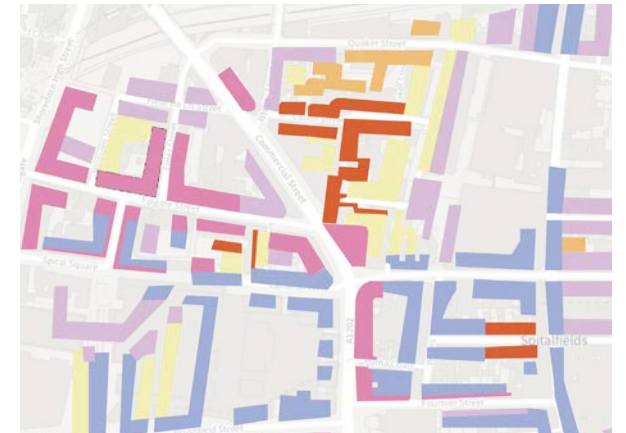
In her poems, Sally shows a real diversity living together in the city. So I started to look for data that revealed this diversity. I found information on demographics, levels of wealth, but I also walked around the city, looking for traces of communities.



Traces
of communities



Demography



Richness

French protestant



Bangladeshi community



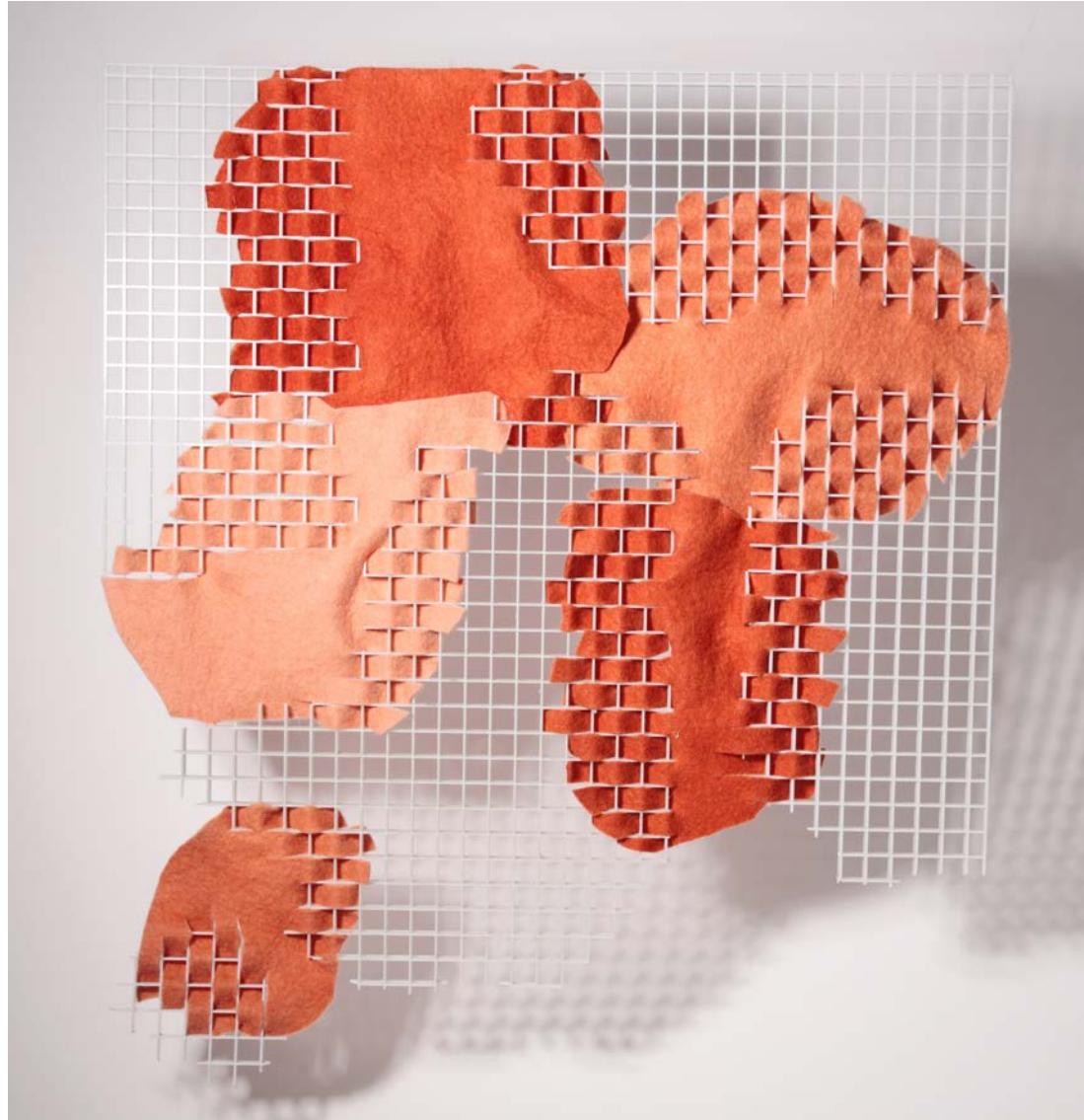
Jews community

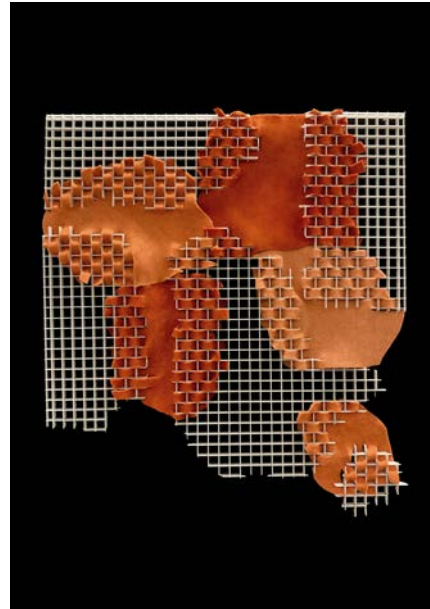
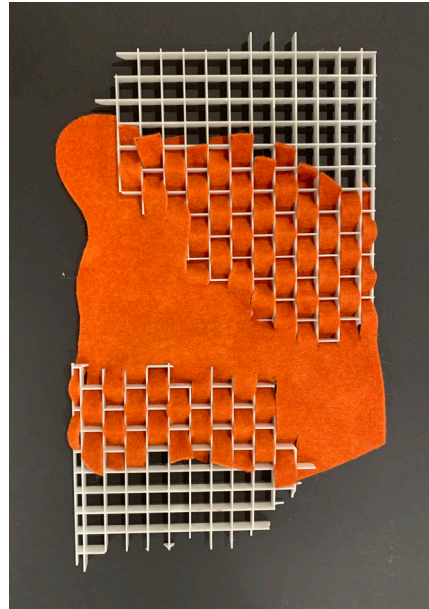
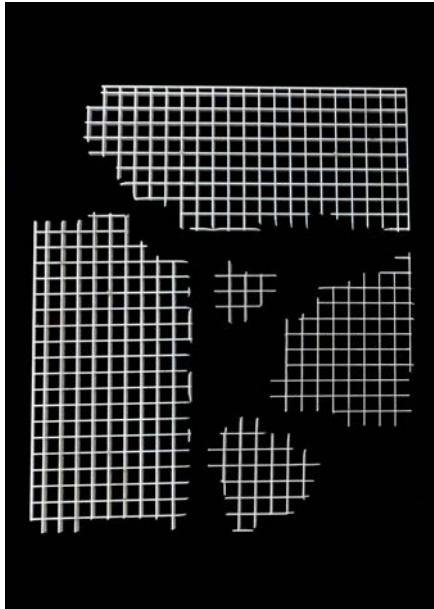




Concept of patchwork

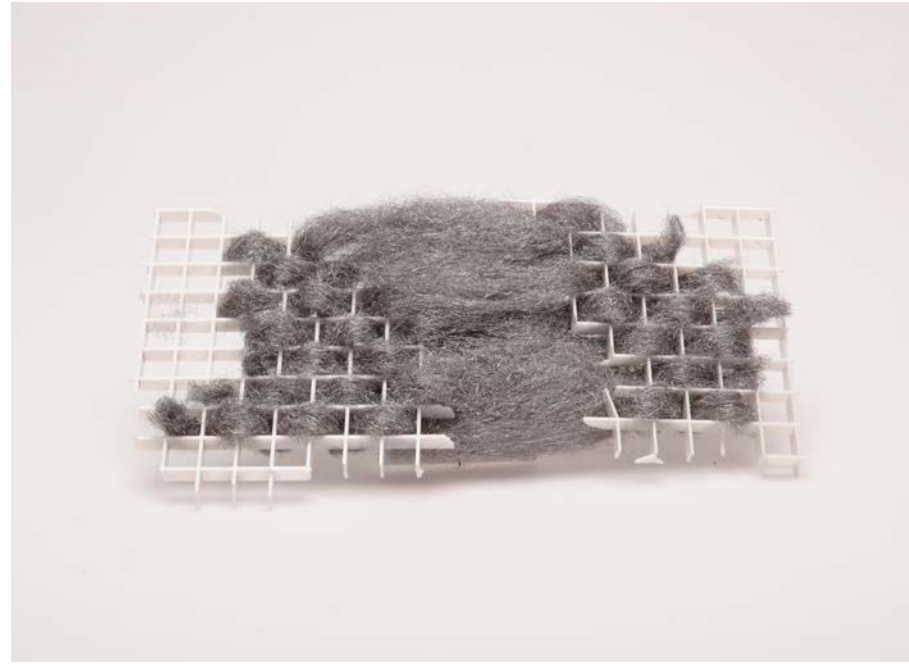
Patchwork represents for me the idea that several completely different elements, once joined together by a special link, create a new harmonious whole.

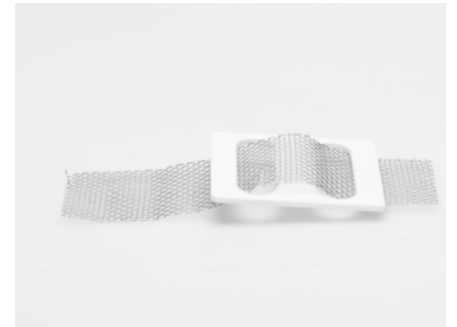
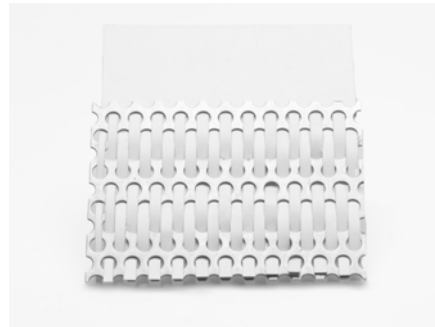
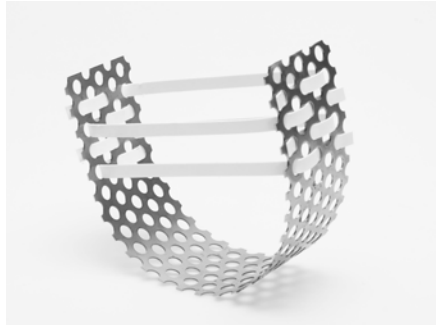




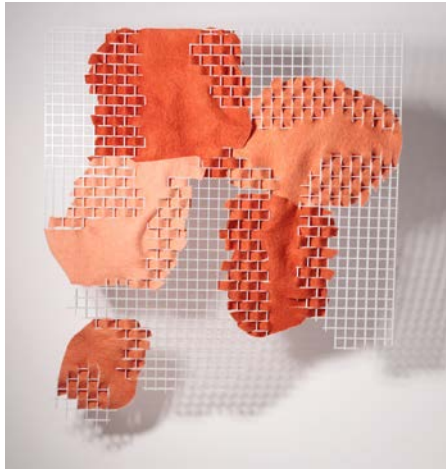
During my first-year project I started to explore this by looking at how different parts could be brought together. As a result I noticed that the final product had gained new technical qualities, so patchwork was an added value.

Joints & junction





Artificial Intelligence & Matter



+



=



+



a prototype of a new material. made from textile weaved with wood. Architectural element

=



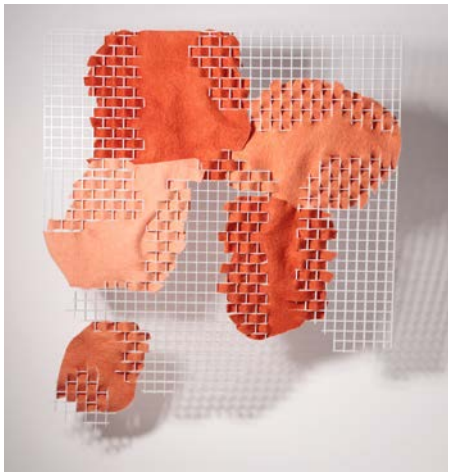
=



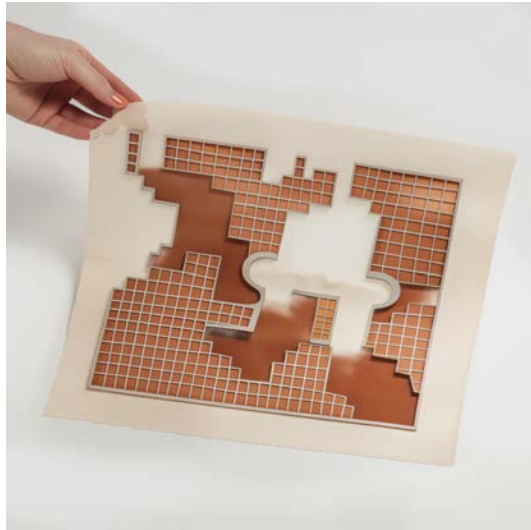
I started experimenting with artificial intelligence by mixing photographs from my primer project. The result reminded me of curtains and a grid, which provided a lot of inspiration for the rest of my project.



+



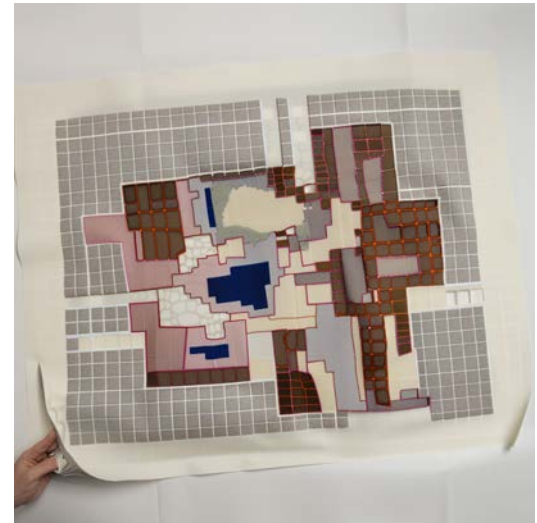
=



+



=





=



+



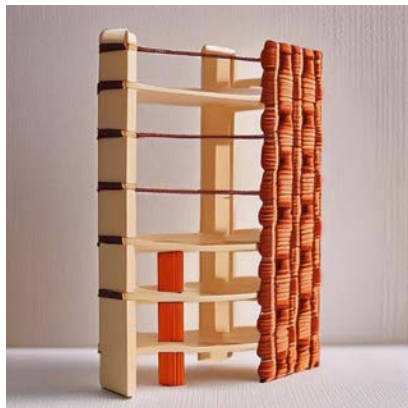
=



A wooden curtain made from pieces of wood and weaved felt. Hanging from a structure.

wooden and felt curtains hanging from the ceiling in a and bricks space, architectural render

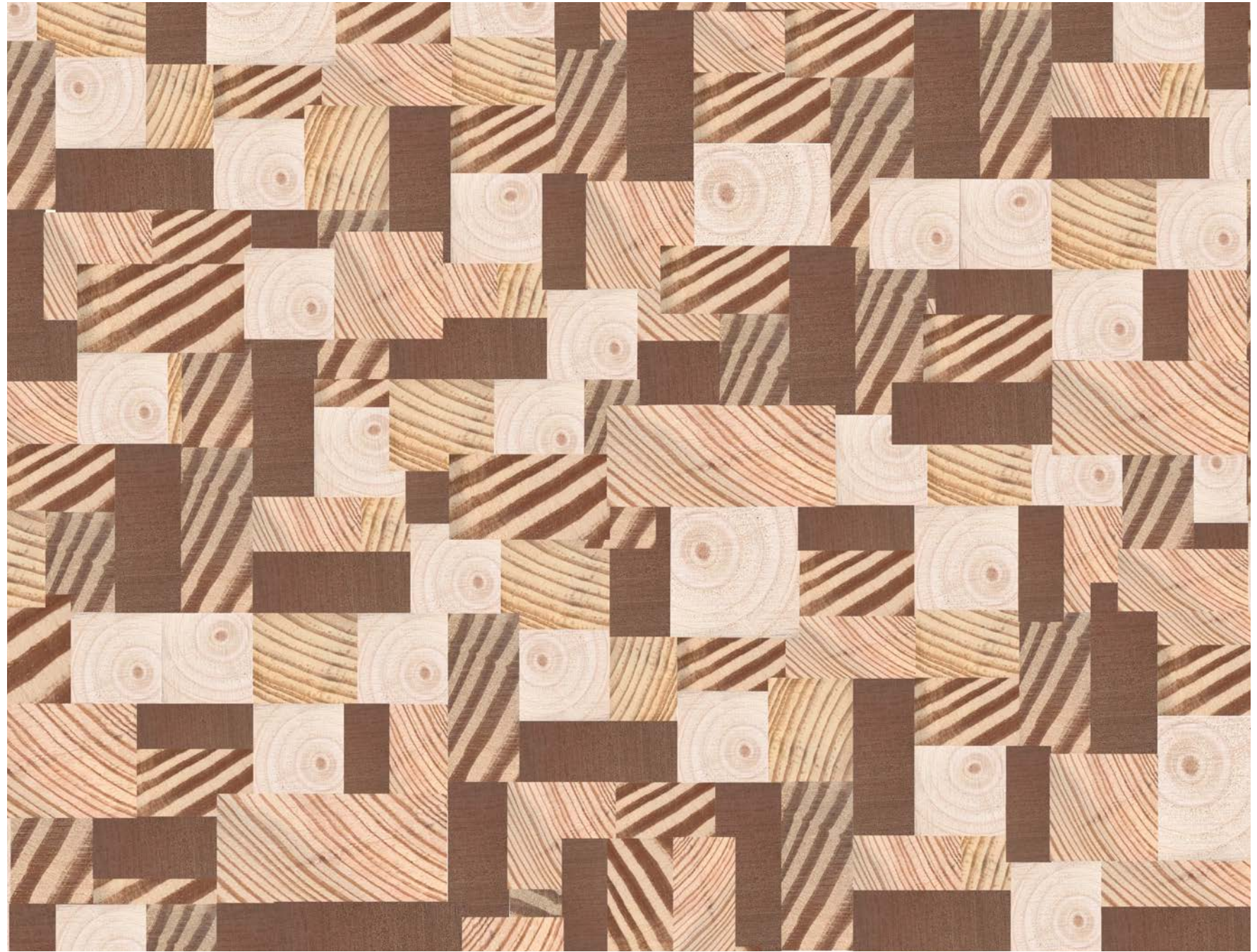
=



I really liked the idea that by adding elements of material that I had created, it could open up my vision to other inspirations. However, as far as the material was concerned, I realised that I'd rather test it myself on the SuperSatelite than work with the AI, which gave me results that I found hard to use. So I was more inspired by the layout and constructive elements than by the material.

So I began to explore the notion of patchwork through materials. Here I've used wood scraps to try and create a harmonious surface.



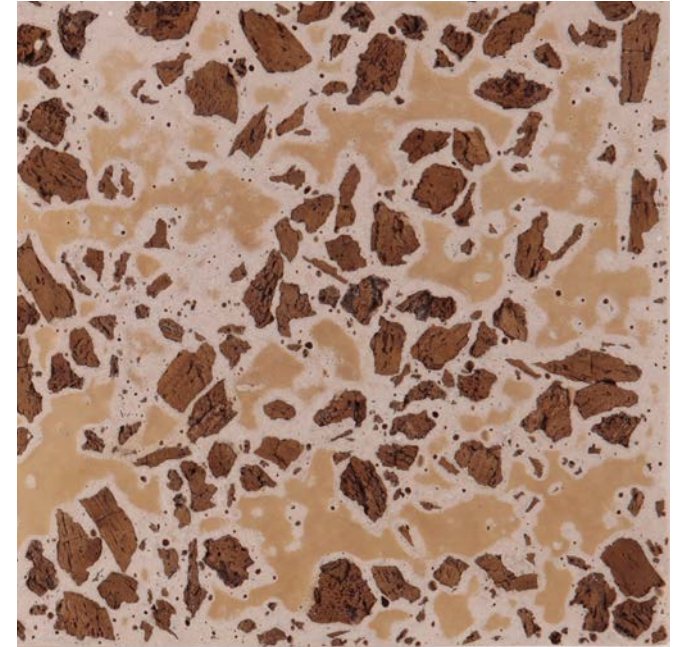


Wooden Patchwork



Different finishes, more or less clean and straight.

Different scale of wood



I also experimented with the idea of binding elements with a liquid substance, in this case Jesmonite. Again, I incorporated scraps of wood, cork or sawdust. I found the result interesting because of its imperfect but aesthetic appearance. Particularly with the sawdust, which recreated the look of terracotta.



The patchwork table

is a community space where peoples in Spitafield share and celebrate their stories through creatives workshops and communal meals, thus preserving Spitafield's collective memory.

Why storytelling ?

Storytelling is **Memory**

Spitafield is a place in constant flux, with both the people and the architecture evolving and changing very quickly. Storytelling is a way of preserving traces of past communities and lives.

Rising rents, a new population, new buildings and a renewal plan.

Storytelling is **Connection:**

When we tell stories together, we become cognitively and physiologically attuned to each other. Our brains and bodies were built for Storytelling in community.

Studies show that despite physical proximity, many people feel isolated from their neighbours in real life, preferring to connect online with virtual friends.

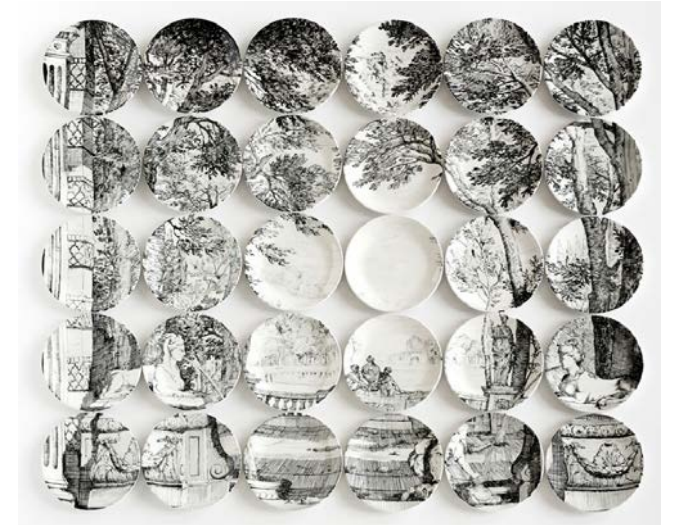
Telling stories through making



Grayson Perry



Natasha Kerr

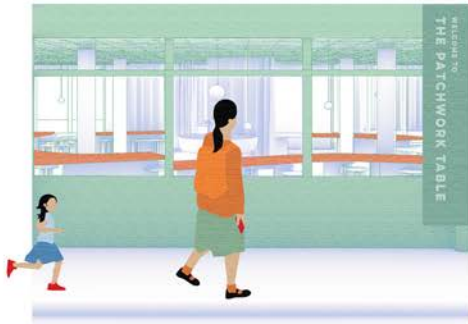


Molly Hatch

These are examples of artists telling stories through textiles or ceramics. This gives an idea of the type of creations that can be made at the workshops.

«The table is a place of communion with each other, a place of sharing, and a place of joy. But it is also a place where the stresses of the world can be discussed and relieved.»

— Laurie Colwin



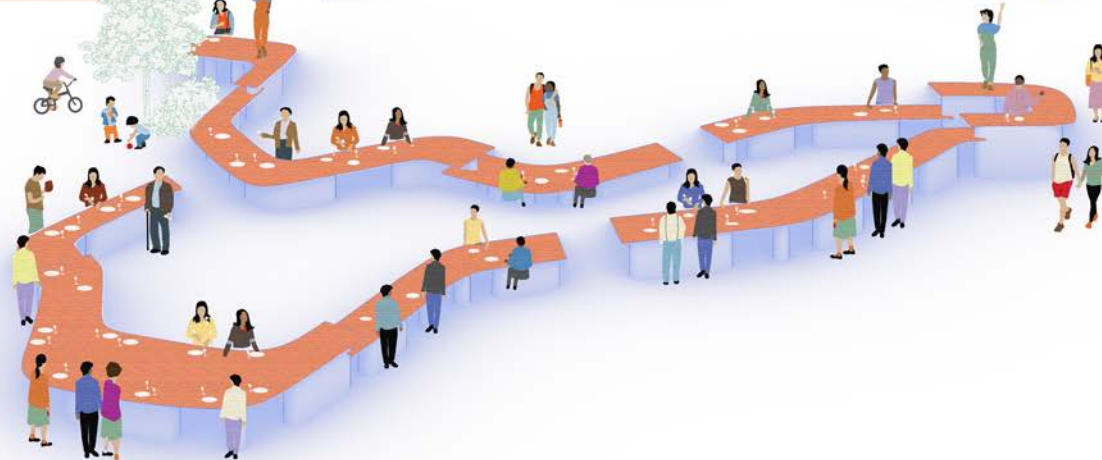
WELCOME TO
THE PATCHWORK TABLE

WORKSHOP

CERAMICS - MON & WED
TEXTILE - MON, WED & THU
COOKING - WED & FRI

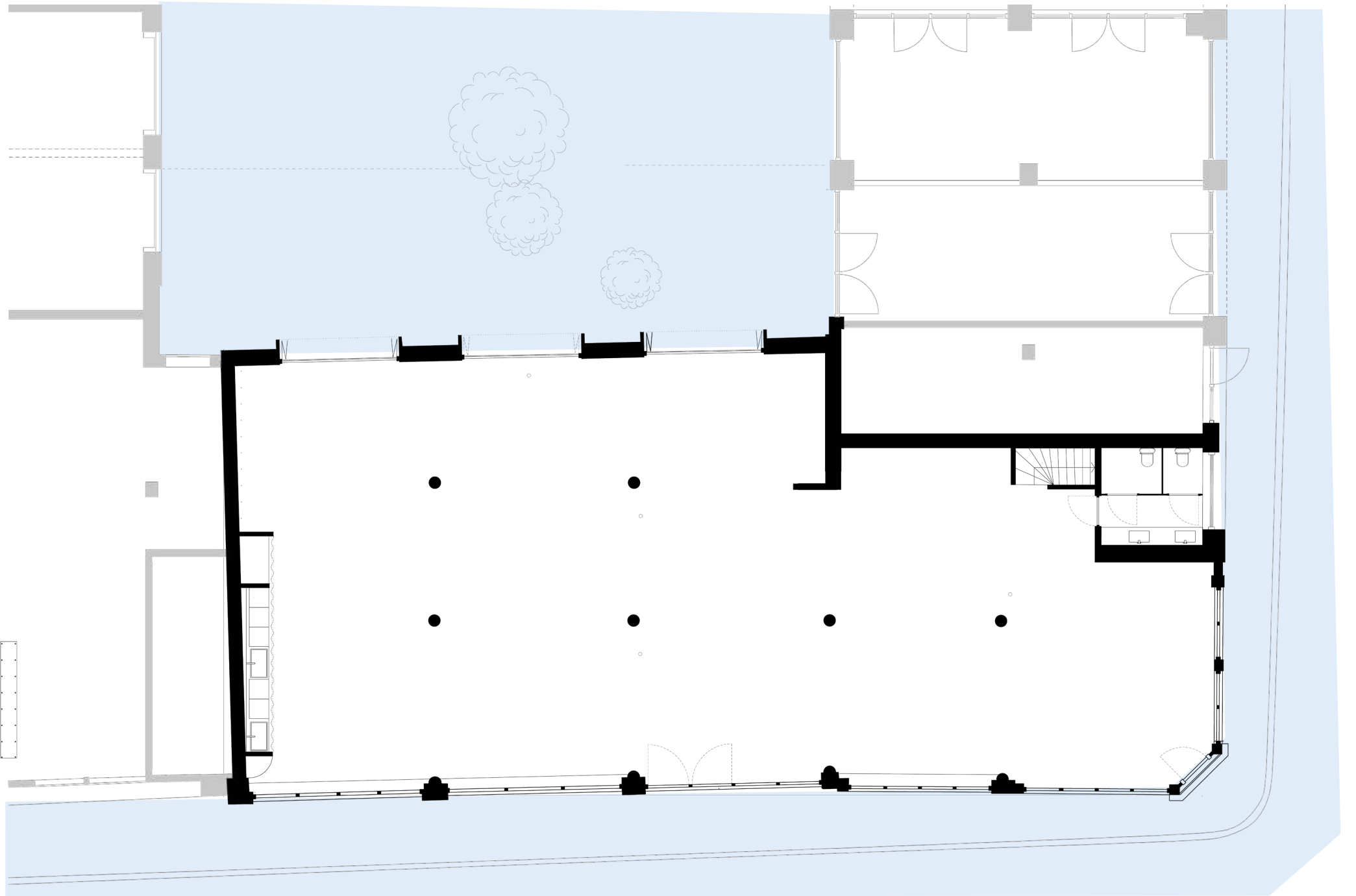
CELEBRATION DINNER
EVERY FRIDAY! EVERYBODY'S WELCOME!

TALKS
RESILIENCE, SUPPORT
AND EMPOWERMENT IN SPITAFIELD



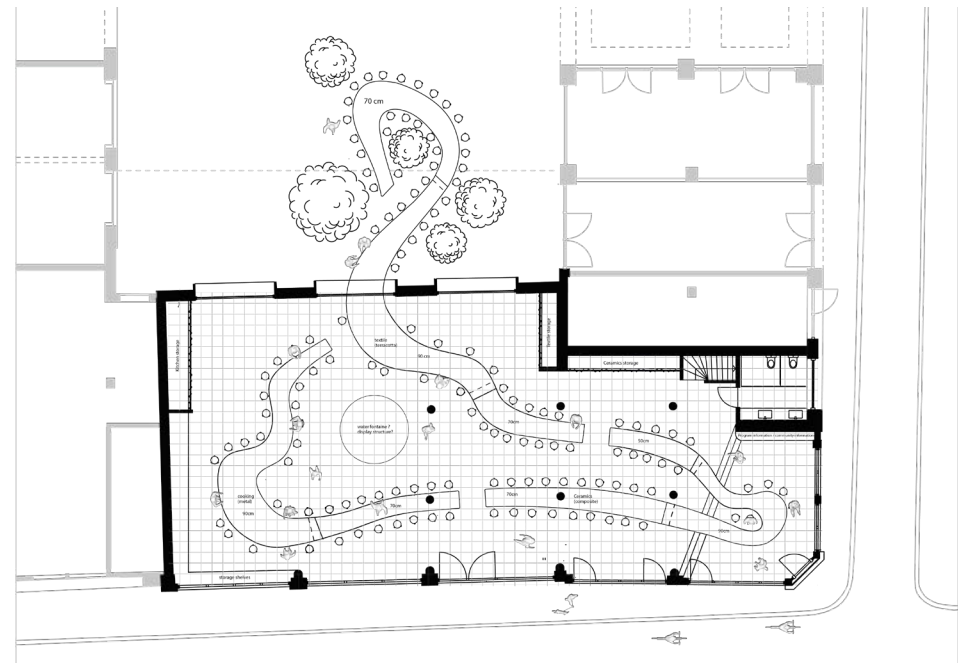
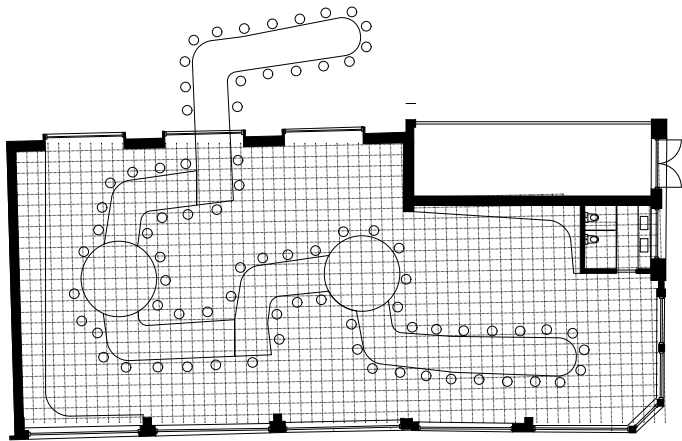


I decided to use the ground floor because it's the most accessible place to the public. In fact, this space is designed to be open to all and welcoming. It has direct access to the street and a rear courtyard, which creates a gradation of privacy.

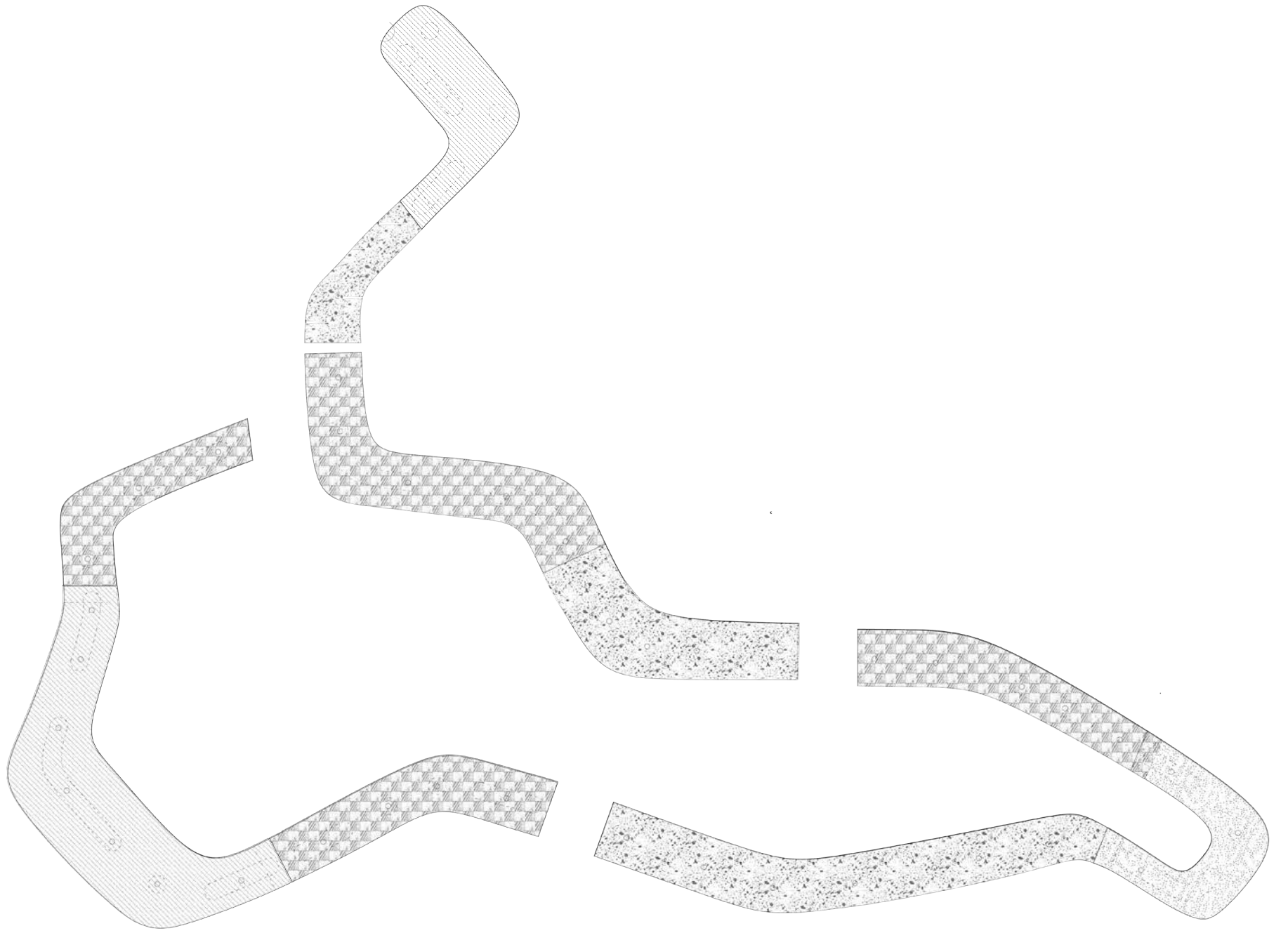


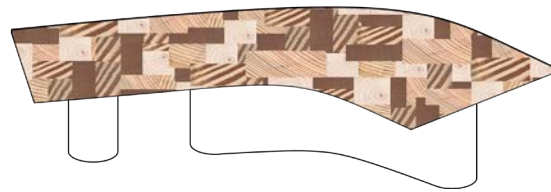
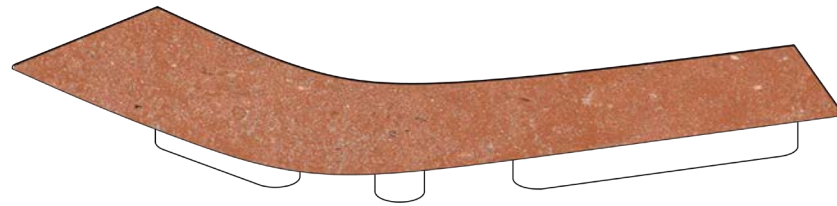
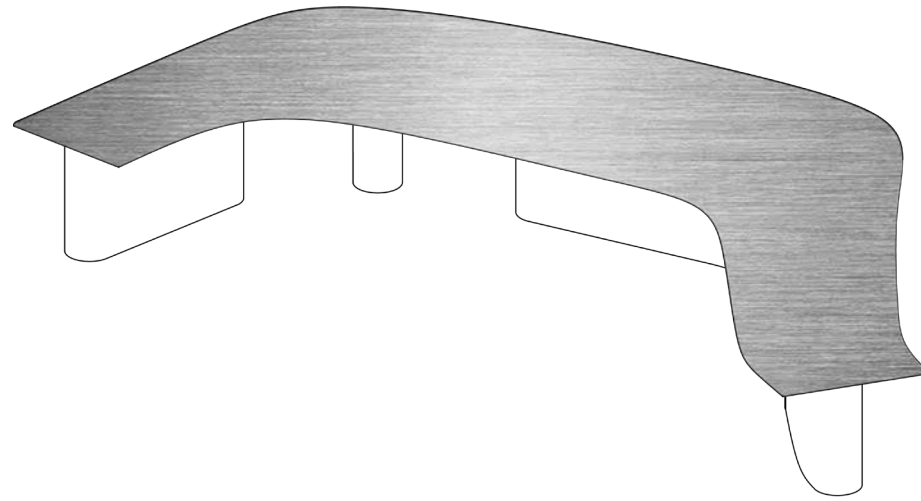
Designing the table

When I started making the plans, I knew I wanted to draw inspiration from my patchwork, but at the same time, I wanted an organic shape that created a natural flow in the space. The initial attempts were not very successful. I tried directly incorporating shapes from the patchwork, like tables, but it was too rigid. I then tried an organic form, but it was too whimsical and free.





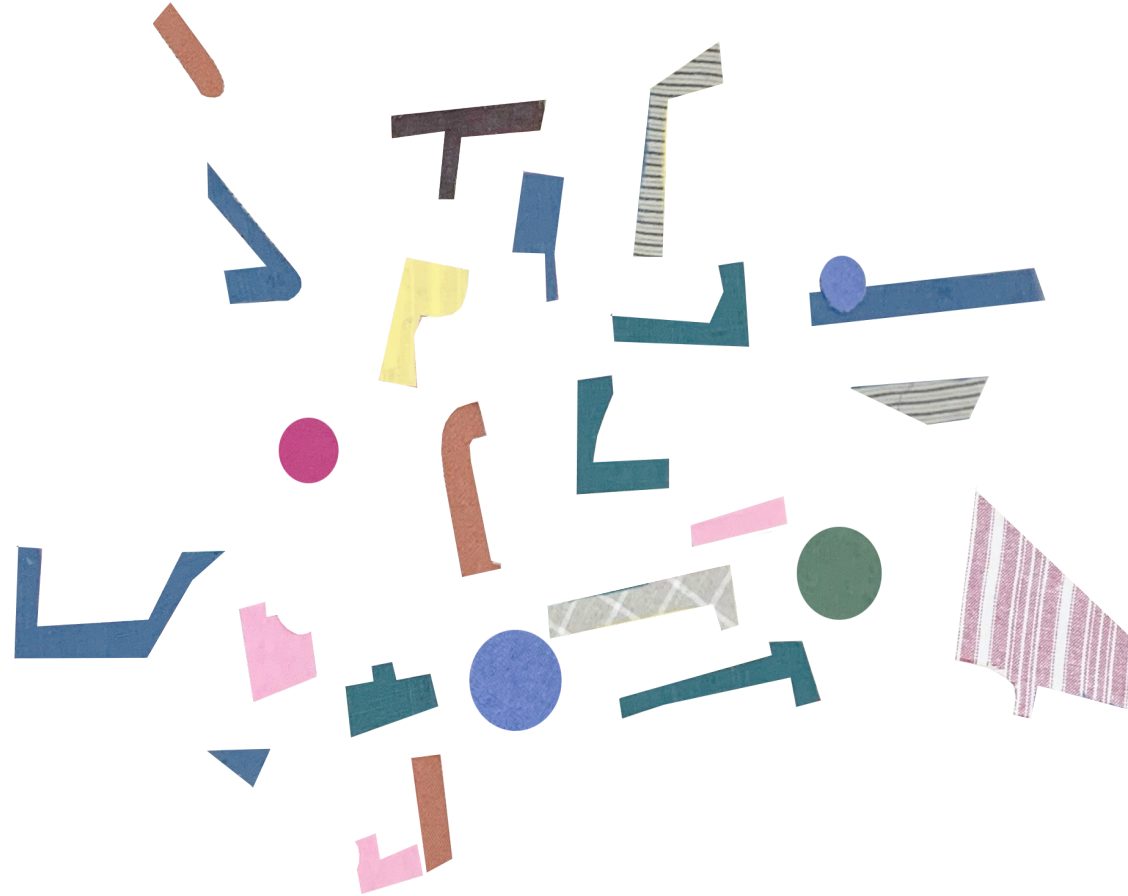


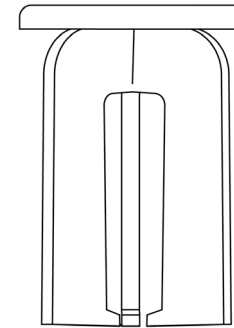


Different materials
Different height
Different width
= adaptable to all the needs

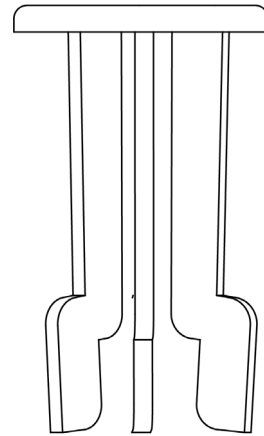
Designing the stool

I decided to create a family of stools with different heights and widths. I got some shapes from patchwork which I used for the base of the stool.

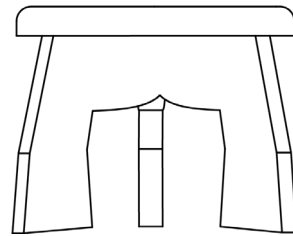




Medium table stool



High table stool

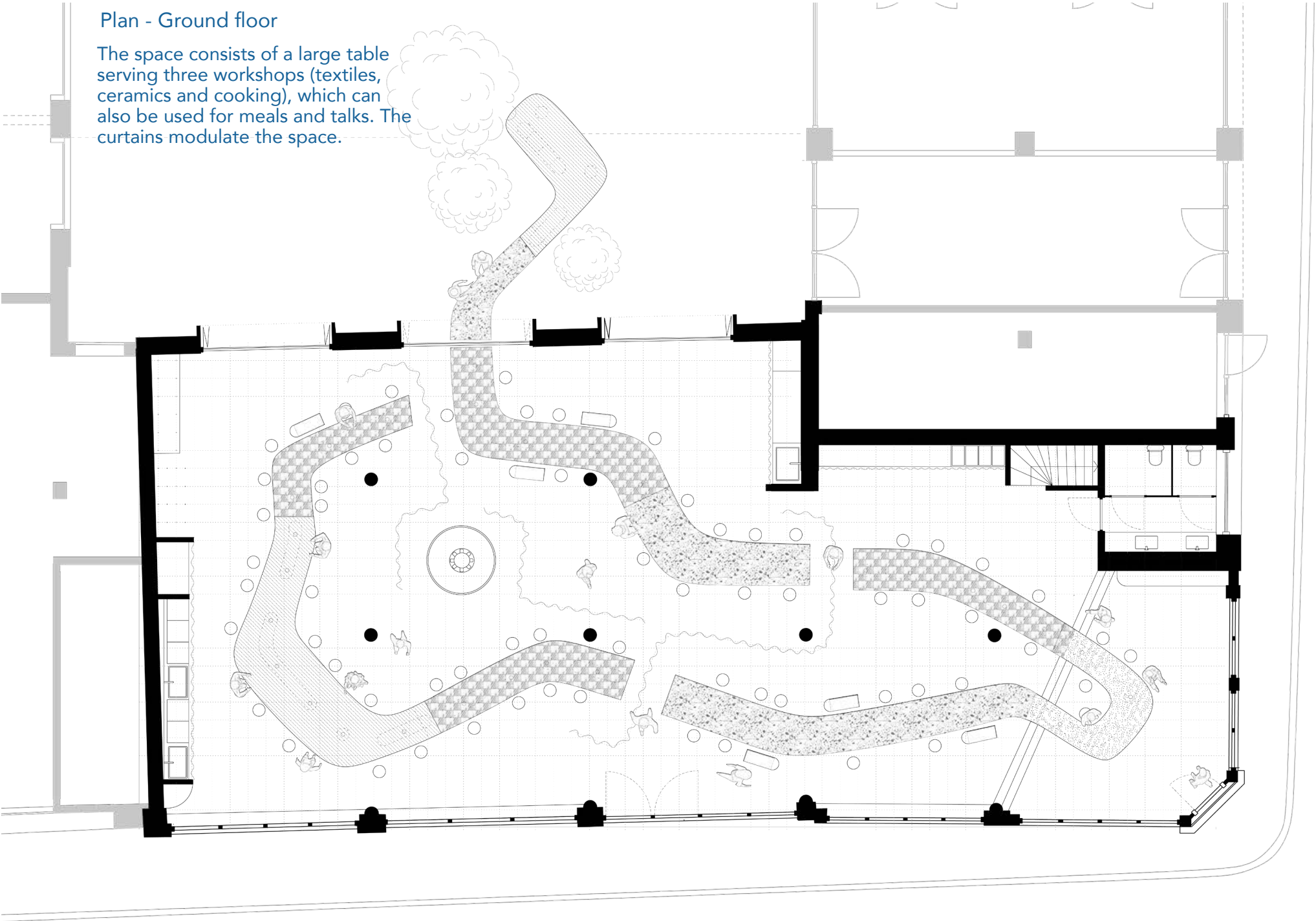


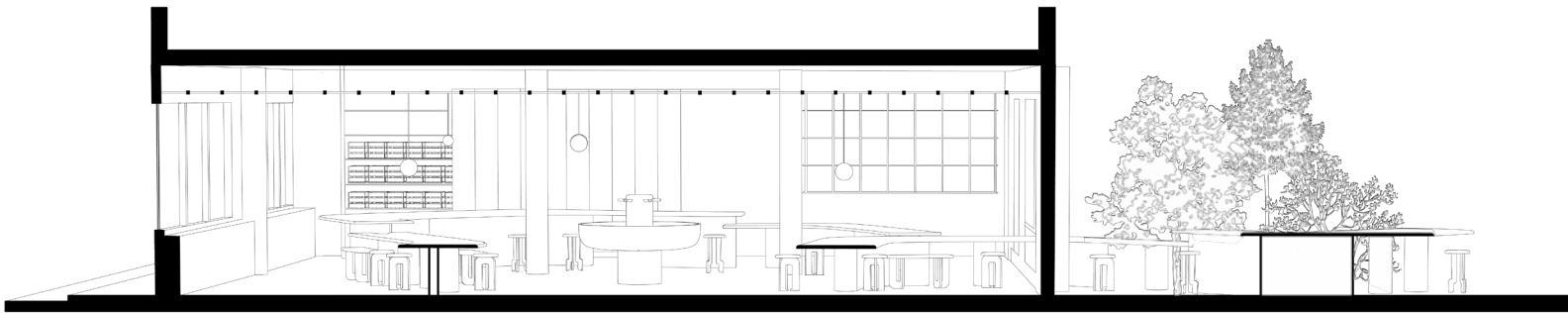
Low table stool



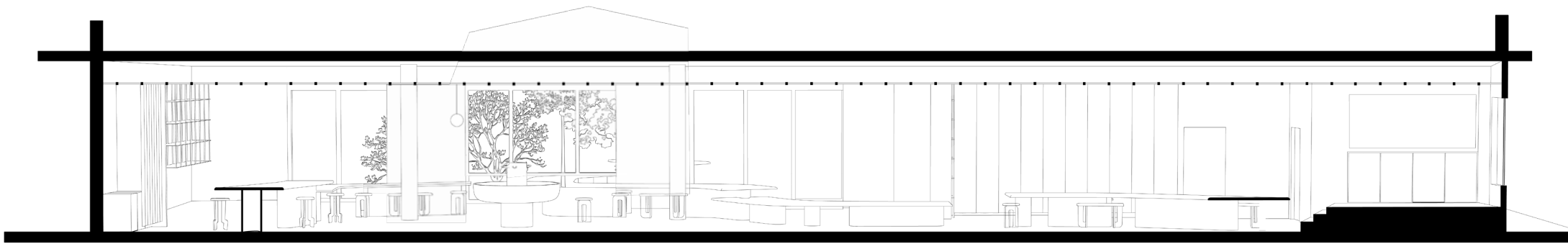
Plan - Ground floor

The space consists of a large table serving three workshops (textiles, ceramics and cooking), which can also be used for meals and talks. The curtains modulate the space.

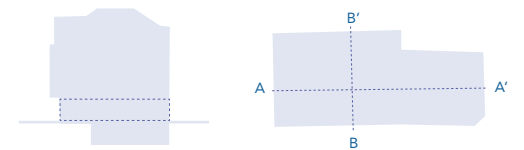




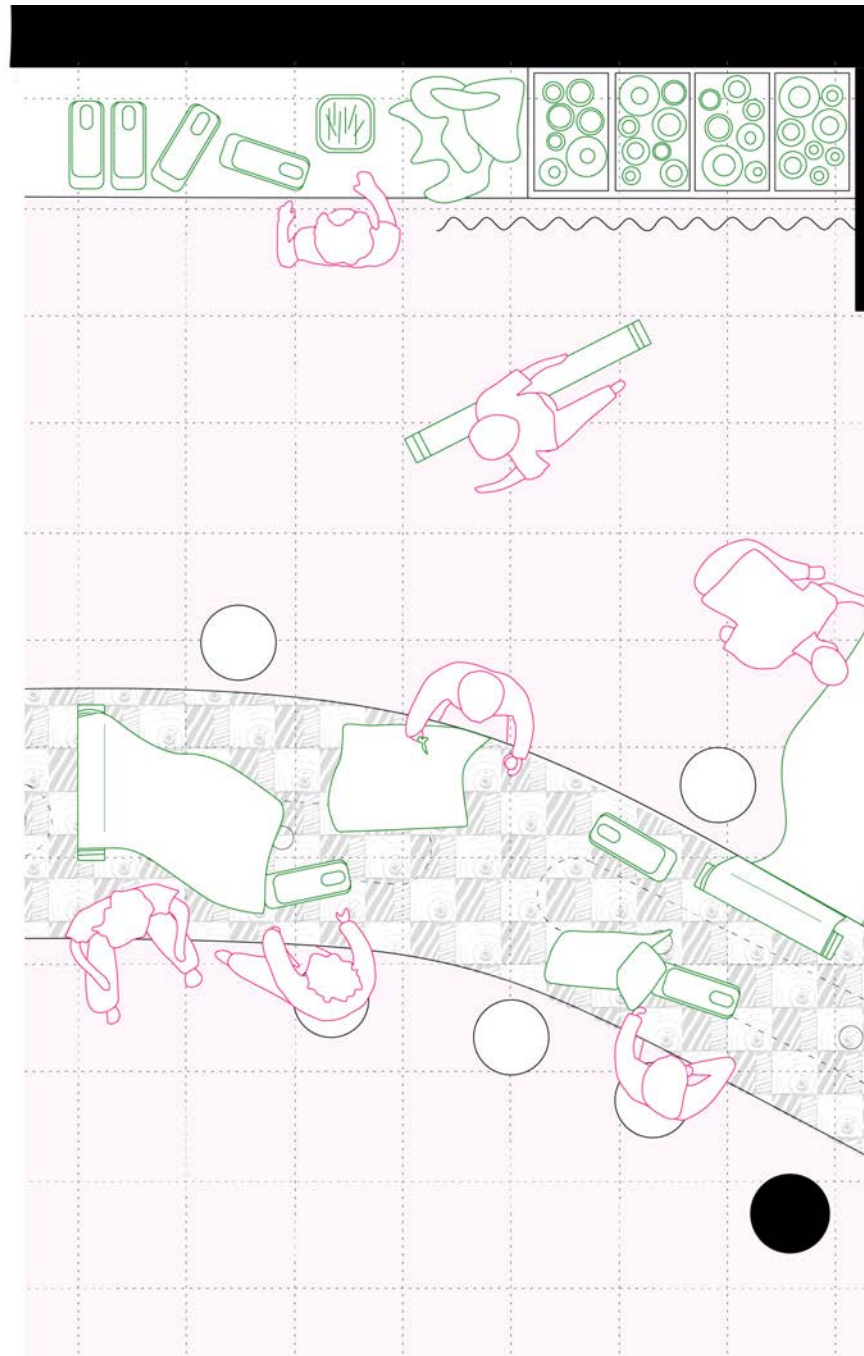
Section BB'



Section AA'



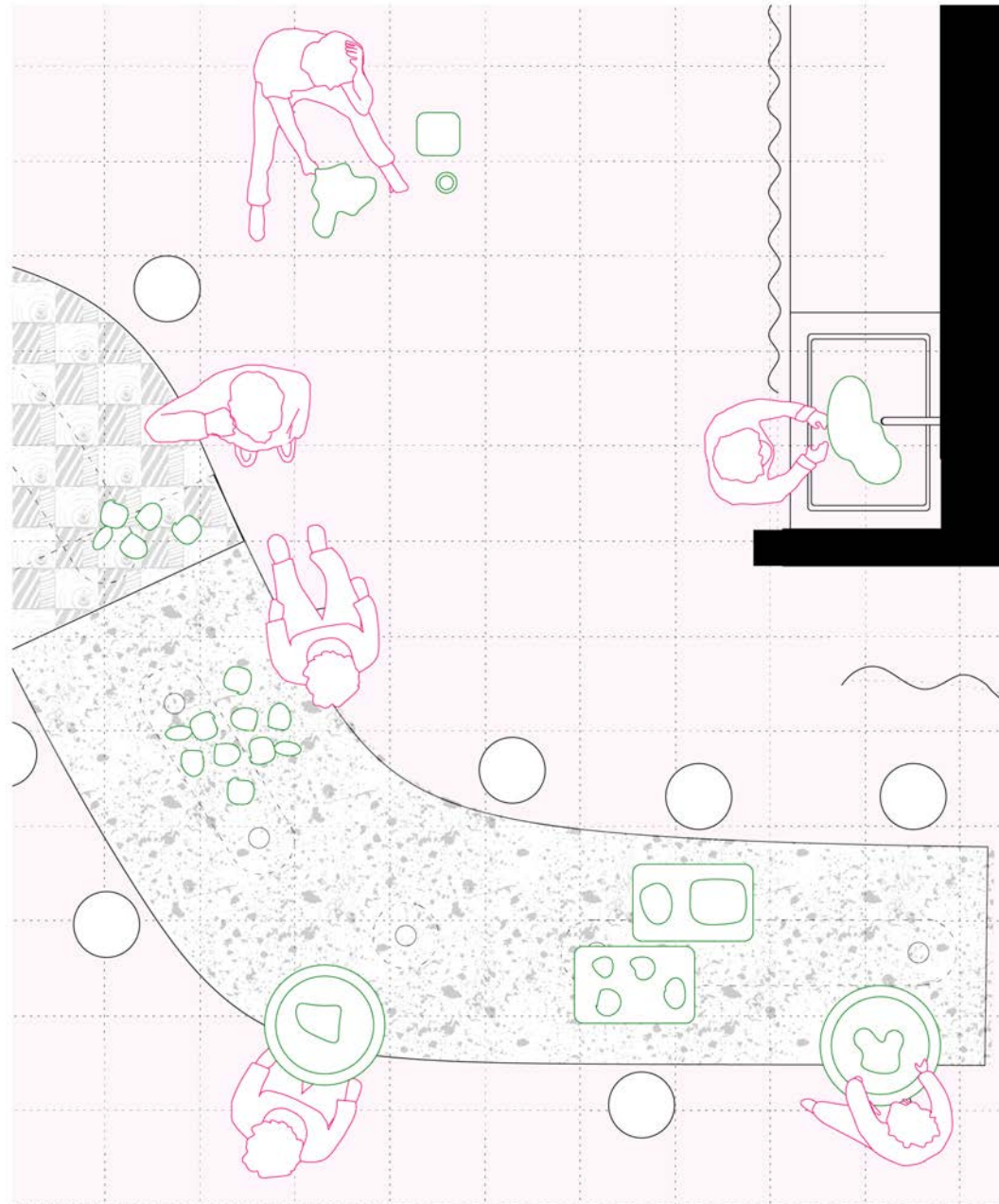
Textile workshop



Each workshop works on the same principle. storage units are placed against the walls and people come and get their materials (e.g. sewing machine) and sit down together on the table.

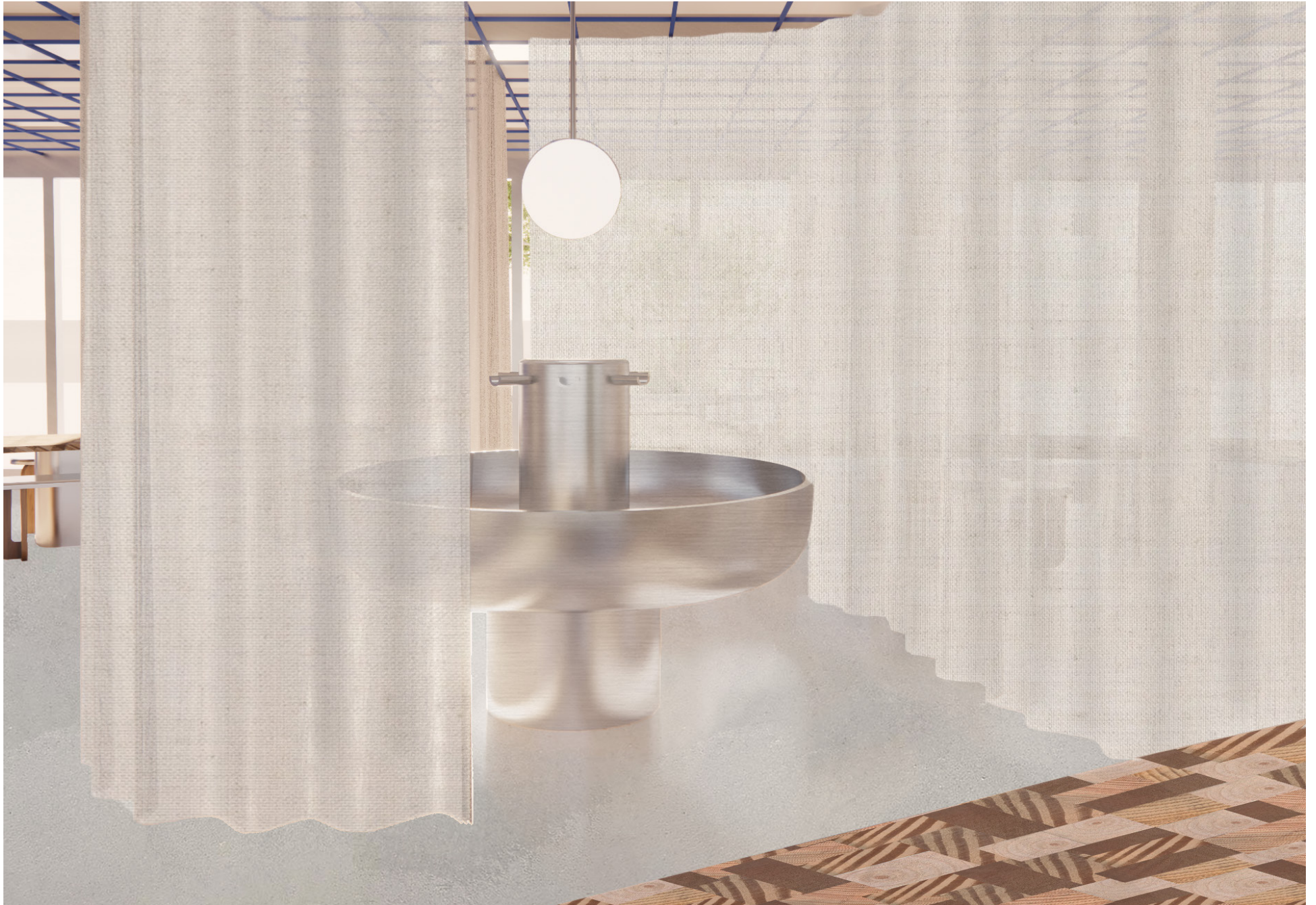


Ceramics workshop



To make ceramics in good condition, there is a sink against the whole and an ceramic oven. The lowest table in the room is here for potter's wheel use.

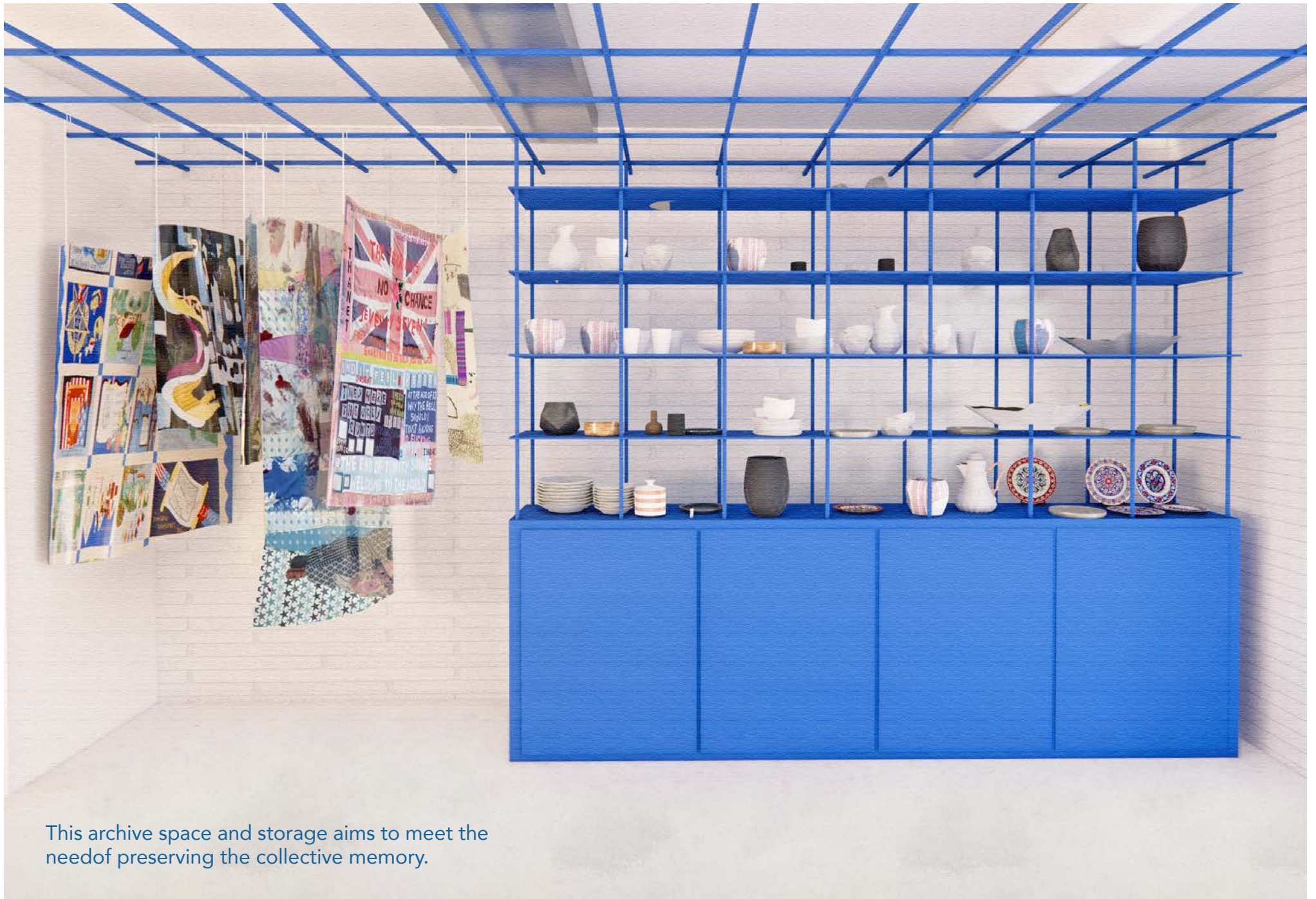




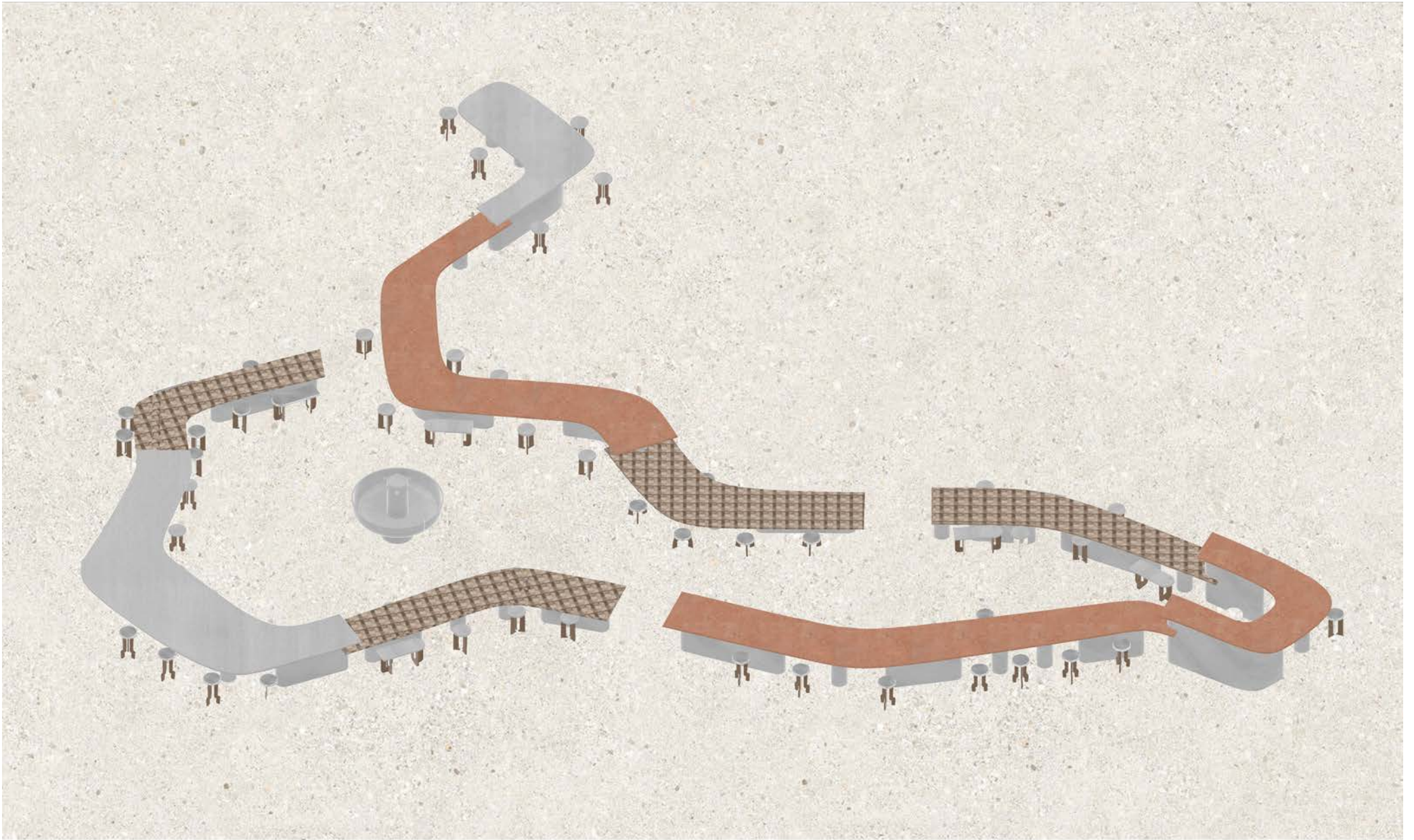




View of the 1:10 model
of the kitchen area



This archive space and storage aims to meet the need of preserving the collective memory.



(GIF)

The Spitefields I see

In the heart of Spitafields, where stories intertwine,
A place for the voices, each stories a thread.
Workshops of ceramics, textiles, and cuisine,
Where hands shape dreams, both flawed and precise.

Tables set for dinners, laughter in the air,
Not every dish perfect, but we hardly care.
Conversations ebb and flow, some deep, some light,
In the glow of our shared, imperfect night.

Here, we dance on tables, shaking off the dust
Here we let our stories speak
It's not all roses, sometimes it's a fight,
But in the cracks, we find our light.

A space for gathering, telling and debates,
Where every story, every voice relates.
In a world that's both rough and serene,
A patchwork of moments, where hearts can heal.
Spitafields, with its edges, its cracks and its seams,
A canvas for life, for preserving collective memory.

The Patchwork Table

Tell your story through making · Spitafeld

