



PORTFOLIO

Aiduo Xiao

*Tutor : Tania Lopez Winkler
Platform : superMATTER
Student Number : 10036700
Major : Interior Design*

Contents

1.0

Project Background

2.0

Core Issues

3.0

Design Concept and Objectives

4.0

Functional Zoning and Layout

5.0

Spatial Design Details

6.0

Materials Palette

7.0

Points System Design

8.0

User Flow Display

1.0

Project Background

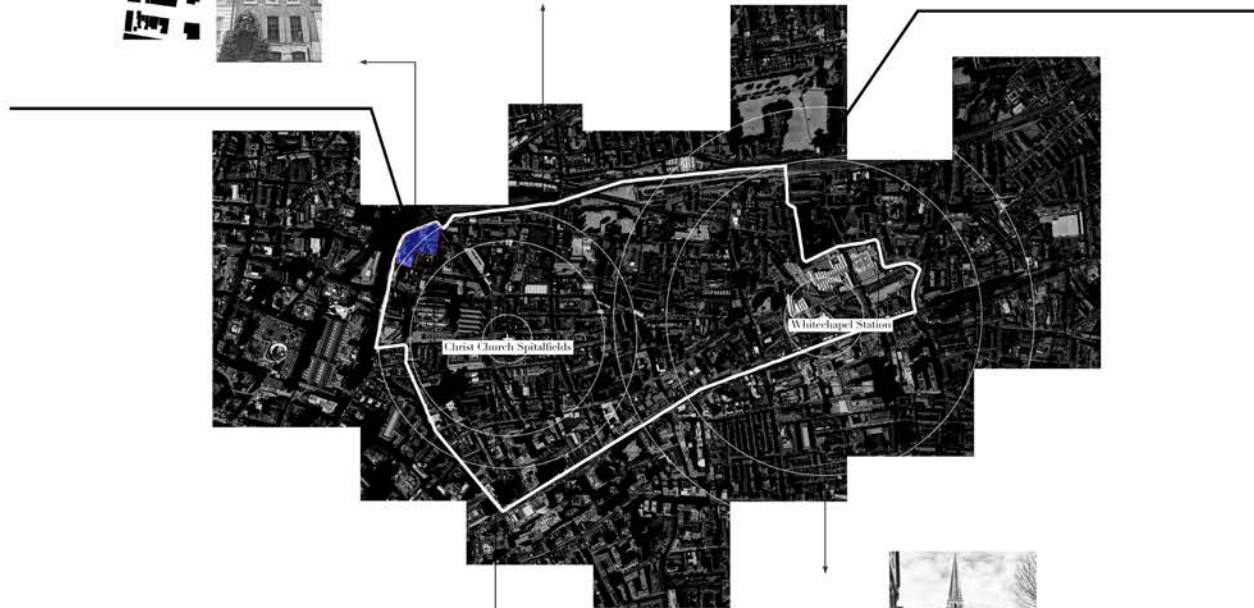
Spitalfields is located in the East End of London, adjacent to the famous Spitalfields Market. This area is renowned for its rich cultural diversity and commitment to environmental sustainability, serving as a microcosm of London's multilingual society and a "melting pot" of Eastern and Western cultures. However, with the area's -always been committed to sustainable development, with a core mission of giving back to the community, whether through collaborations with local charities or through market activities that promote community engagement.

Norton Folgate



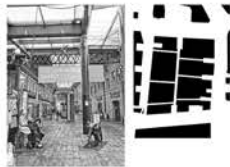
Dennis Severs' House

The Brick Lane Vintage Market



Spitalfields

Old Spitalfields Market



Christ Church Spitalfields

Since the Middle Ages, St Mary's Hospital Covent has been on Bishopsgate Street.



After the dissolution of the Covent, the land was sold and changed to Norton Folgate.

Many buildings were constructed in this area. Meanwhile, silk manufacturing was fully developed which promoted numerous silk manufacturers around the street.



Silk Manufacturer

The buildings on this street were mainly for residential use. They were usually inhabited by carpenters, stable managers, innkeepers, carriage manufacturers, etc.



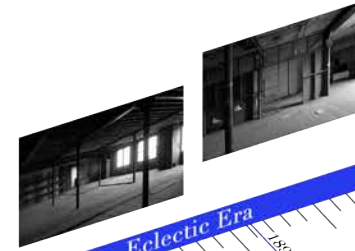
The Norton Folgate Boys' Charity School, established in 1691, provided children's education services to the local community.

In the 18th century, the southern end of Blossom Street contained the stables and stable yard. Then, carpenters and builders gradually played a crucial role in the renovation and restoration of buildings.



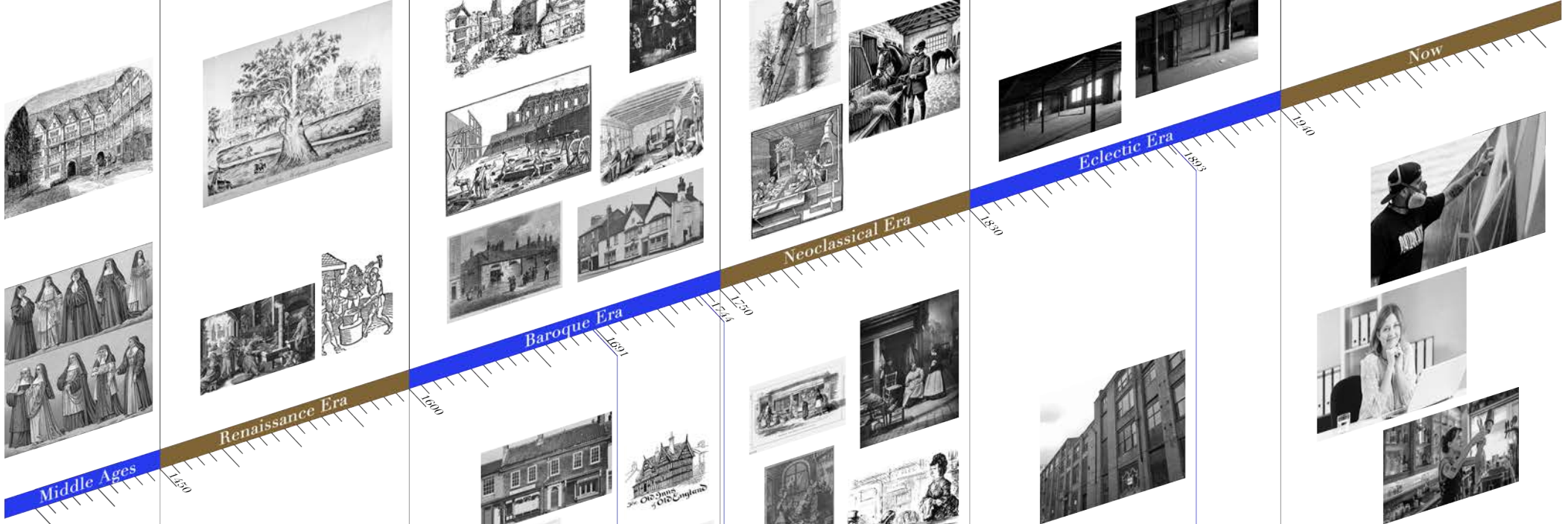
Goldsmiths and silversmiths were actively involved in craft making and trading on Folgate Street. The pubs and hotels on Folgate Street and Blossom Street provided sufficient services for travelers.

In the 19th century, commercial buildings and warehouses replaced the original smaller buildings. The expansion of many large enterprises such as Nicholls & Clarke required larger buildings.



Silk weave in East London

Due to the bombing devastation of World War II, the region's rebuild was prompted and even triggered economic and social revolutions. It contributed to the renovation of old buildings and novel uses in this area.



Pakistanis in London represent a diverse mixture of South Asian subgroups. Pakistani Londoners are mostly Muslims who speak Urdu and Punjabi amongst other languages. Moreover, Pakistanis' contribution to the steel, textile and medical sectors in Britain have been significant.



Pakistani

The area of Spitalfields and Brick Lane was populated mainly by Bangladeshis who had come to Britain from the Sylhet region looking for better work. Many found work in factories and the textile trade.



Bangladeshi

Chinese immigrants settled predominantly in the East End of London and were drawn to London by international trade and the politics of empire. London's Chinese communities formed a small but important note in the medley of voices by their traditional culture and characters.



Chinese

Most British Arabs are Sunni Muslims. They share a common Arab ethnicity, culture, language and identity from different Arab countries including Yemen, Syria, Iraq, Lebanon, Jordan, Egypt and Palestine.



Arab

Caribbean

Other

White British

Jewish

Black African

Indian

Irish

French

White British

Jewish

Black African

Indian

Irish

French

White British

Jewish

Black African

Indian

Irish

French

White British

Jewish

Black African

Indian

Irish

French

White British

Jewish

Black African

Indian

Irish

French

White British

Jewish

Black African

Indian

Irish

French

White British

Jewish

Black African

Indian

Irish

French

White British

Jewish

Black African

Indian

Irish

French

White British

Jewish

Black African

Indian

Irish

French

White British

Jewish

Black African

Indian

Irish

French

White British

Jewish

Black African

Indian

Irish

French

White British

Jewish

Black African

Indian

Irish

French

White British

Jewish

Black African

Indian

Irish

French

White British

Jewish

Black African

Indian

Irish

French

White British

Jewish

Black African

Indian

Irish

French

White British

Jewish

Black African

Indian

Irish

French

White British

Jewish

Black African

Indian

Irish

French

White British

Jewish

Black African

Indian

Irish

French

White British

Jewish

Black African

Indian

Irish

French

White British

Jewish

Black African

Indian

Irish

French

White British

Jewish

Black African

Indian

Irish

French

White British

Jewish

Black African

Indian

Irish

French

White British

Jewish

Black African

Indian

Irish

French

White British

Jewish

Black African

Indian

Irish

French

White British

Jewish

Black African

Indian

Irish

French

White British

Jewish

Black African

Indian

Irish

French

White British

Jewish

Black African

Indian

Irish

French

White British

Jewish

Black African

Indian

Irish

French

White British

Jewish

Black African

Indian

Irish

French

White British

Jewish

Black African

Indian

Irish

French

White British

Jewish

Black African

Indian

Irish

French

White British

Jewish

Black African

Indian

Irish

French

White British

Jewish

Black African

Indian

Irish

French

White British

Jewish

Black African

Indian

Irish

French

White British

Jewish

Black African

Indian

Irish

French

White British

Jewish

Black African

Indian

Irish

French

White British

Jewish

Black African

Indian

Irish

French

White British

Jewish

Black African

Indian

Irish

French

White British

Jewish

Black African

Indian

Irish

French

White British

Jewish

Black African

Indian

Irish

French

White British

Jewish

Black African

Indian

Irish

French

White British

Jewish

Black African

Indian

Irish

French

White British

Jewish

Black African

Indian

Irish

French

White British

Jewish

Black African

Indian

Irish

French

White British

Jewish

Black African

Indian

Irish

French

White British

Jewish

Black African

Indian

Irish

French

White British

Jewish

Black African

Indian

Irish

French

White British

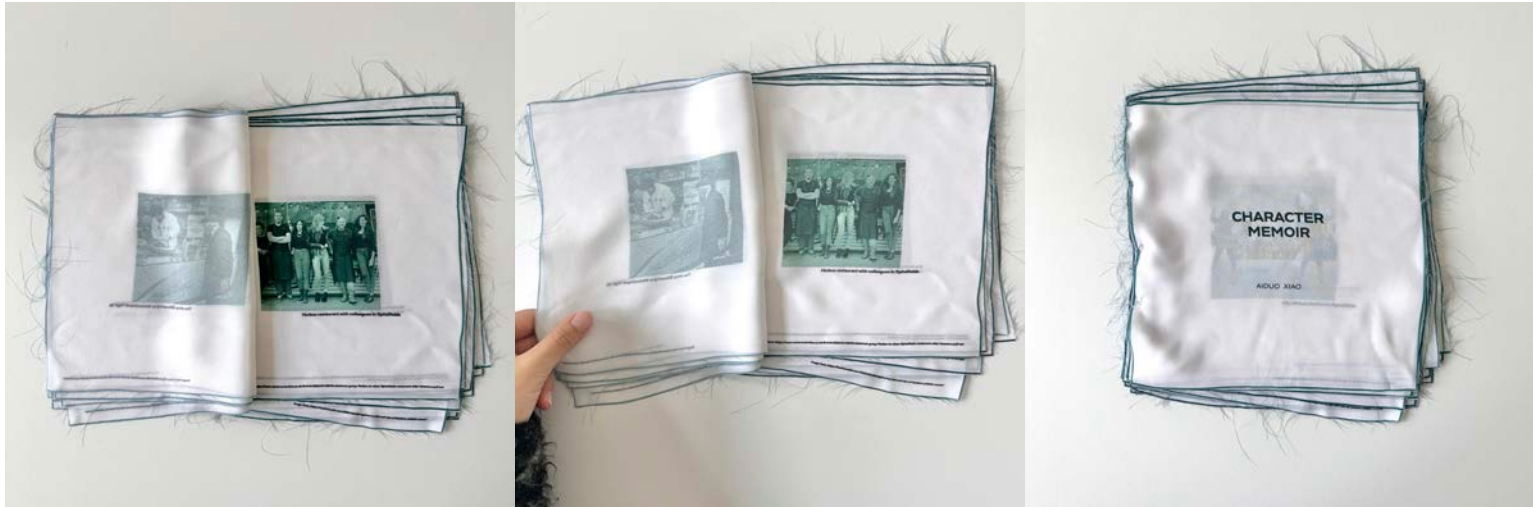
Jewish

Black African

Indian

Irish

French



Character Memoirs

Core Issues

Reduction in Cultural Diversity

Spitalfields is embroiled in debates about community character and affordable housing, evidenced by the trend of new residential projects targeting the high-end market as more luxury apartments and commercial projects are established. The prices of these developments are often unaffordable for many average wage earners. This has led to a growing scarcity of genuinely affordable housing for a broad range of groups, including low-income families and young professionals. With the local economy's upward trajectory and rising housing costs, there are concerns that socioeconomic stratification and segregation may intensify. If indigenous inhabitants and low-income groups are forced to relocate or their voices in the community are marginalized, this diversity and sense of belonging could be at risk. The cultural and social structure of the community might change with the influx of higher-income residents, potentially affecting the community's long-term cohesion and identity.

"Spitalfields is losing its character diversity."

French Community & huguenotS



Bangladeshi Inhabitants



Native Jewish Residents



Irish Immigrants



Local Homeless



Blue-and-White Collar Workers



Artisans & Technicians



Design Concept and Objectives

To address these core issues, it has been decided to establish a community center with a clothing bank as its central feature. This center will not only serve as a model to help tackle the challenges of London being a major textile consumer and waste city but will also reflect the community's cultural heritage through its spatial design and points system. It aims to meet current needs and promote sustainable development.



Community Centre

+



Sustainable Development

→



Clothing Bank

+



Credit System

+



Clothing Donation
&
Purchase



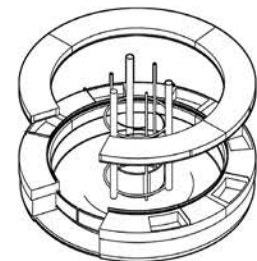
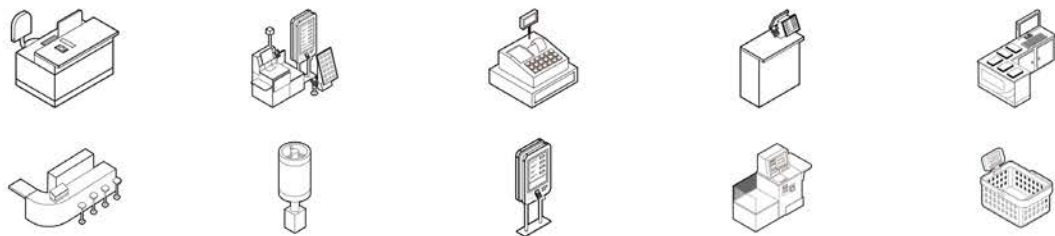
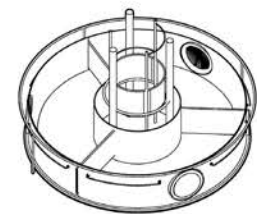
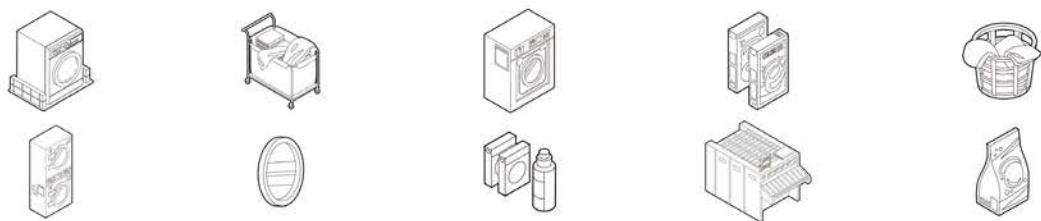
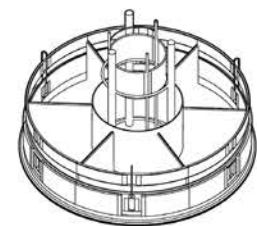
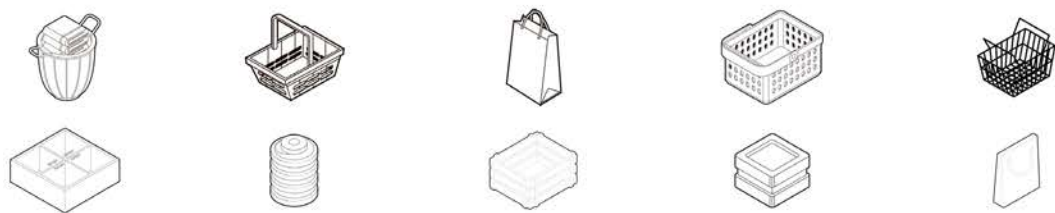
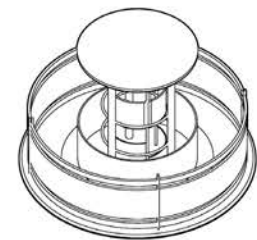
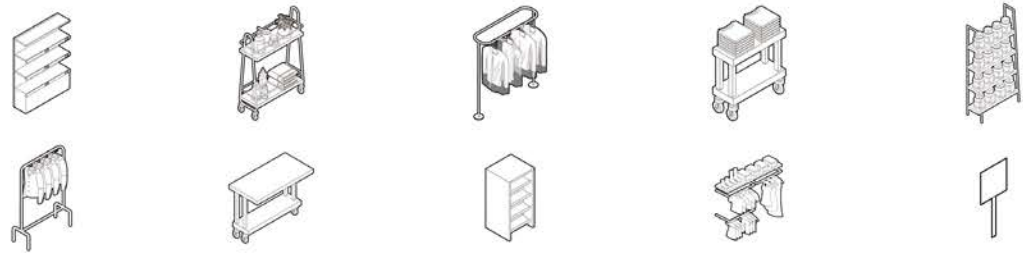
Volunteering Services



Workshop & Education



Laundry & Recycle





Color
Experiment

Prompts

1. Colorful

A vibrant, multi-colored design with bright hues and contrasting patterns, creating an energetic atmosphere.

2. Plywood

A layered plywood structure showcasing natural grain and texture in a modern design.

3. Cork

An inviting space using cork materials, highlighting natural texture and earthy tones.

4. Metal Rods

An industrial design with metal rods arranged for a minimalist, functional aesthetic.

5. Metal Sheets

A contemporary design with large metal sheets, emphasizing sleek surfaces and clean lines.

6. Le Corbusier Style

A design inspired by Le Corbusier with geometric lines, functional spaces, and modern materials like concrete and steel.

7. Bauhaus

Bauhaus-inspired design with geometric forms, primary colors, and simplicity.

8. Minimalist

A minimalist design focusing on simplicity, clean lines, and open spaces.

9. Laundry Room

A well-organized laundry room with modern washing machines and ample storage.

10. Ironing Room

A spacious ironing room with a large table and shelves for optimal functionality.

11. Labeled Laundry Baskets

Laundry baskets with clear labels for efficient sorting, featuring sturdy materials.

12. Round Reception Desk

A circular reception desk with a sleek design and integrated lighting.

13. Round Glass Wardrobe

A round glass wardrobe for elegant and transparent clothing display.

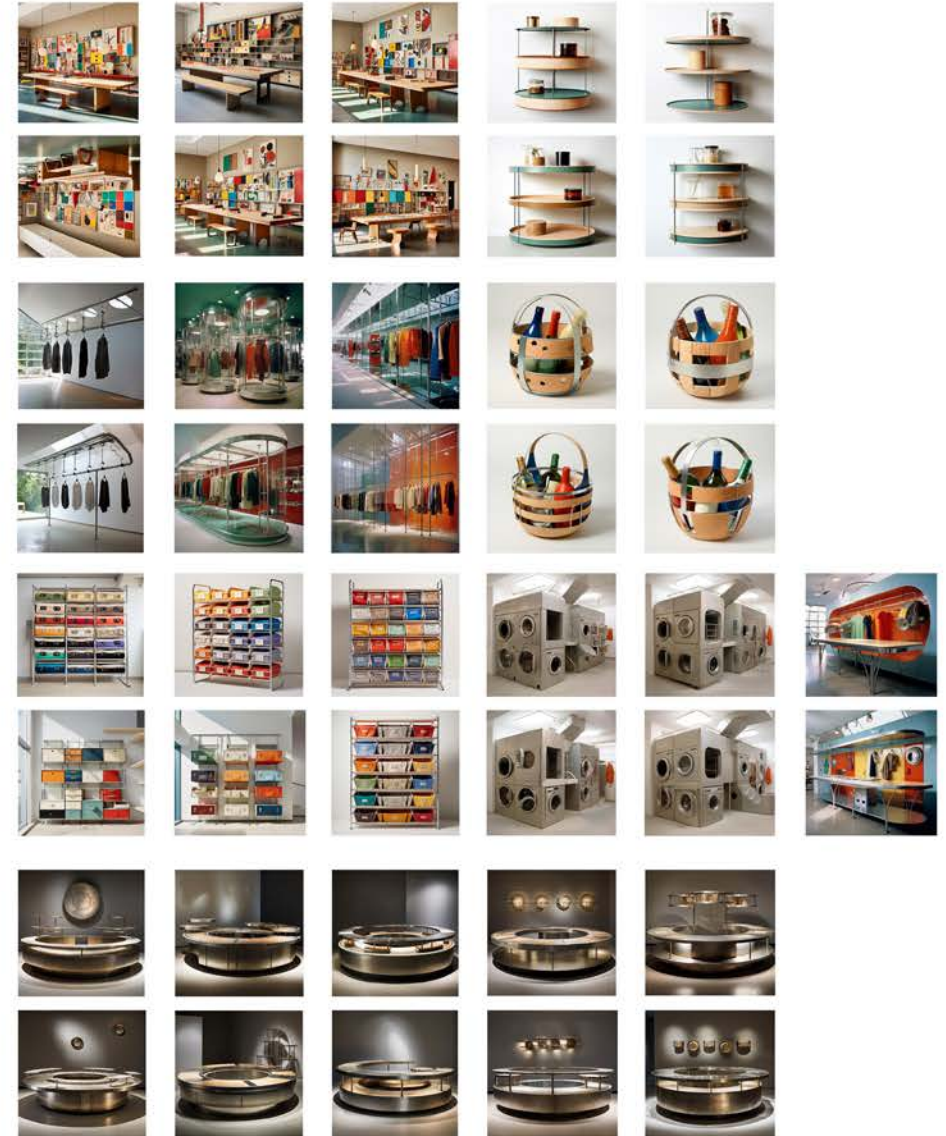
14. Workshop

A functional workshop with workbenches, tools, and organized storage.

15. Shelves

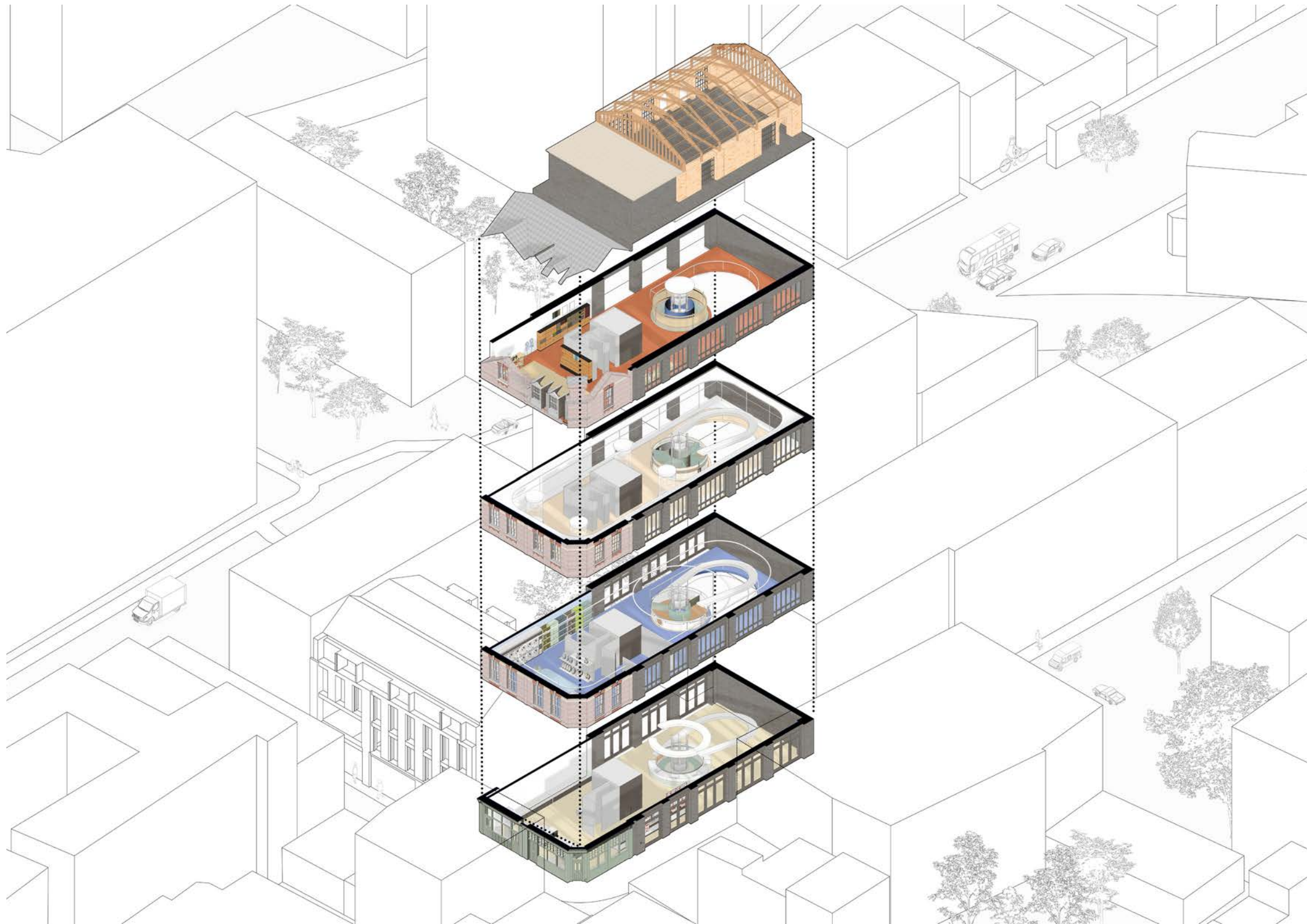
Versatile shelving units for optimal storage and display with a modern design.

Midjourney

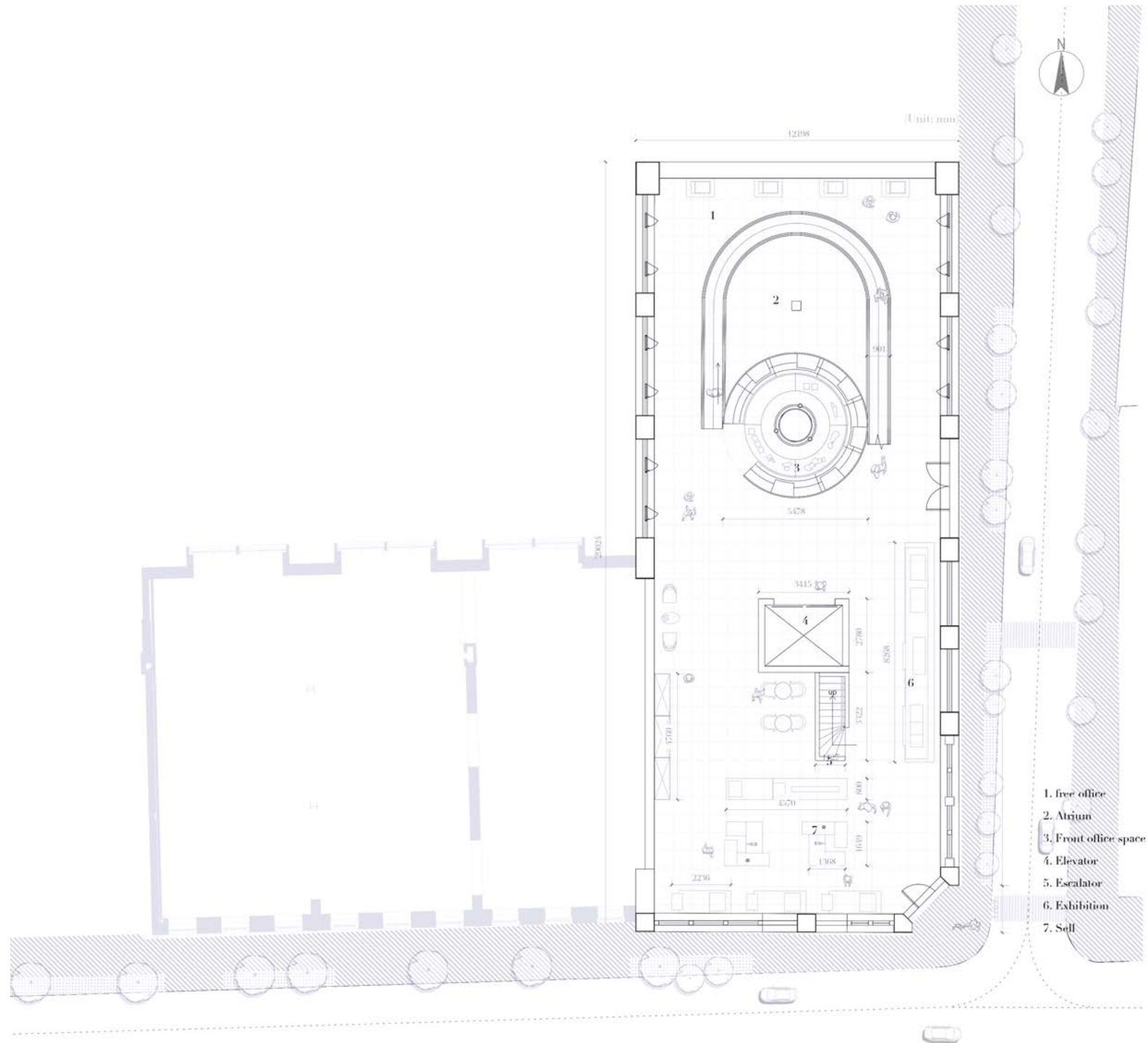


Functional Zoning and Layout

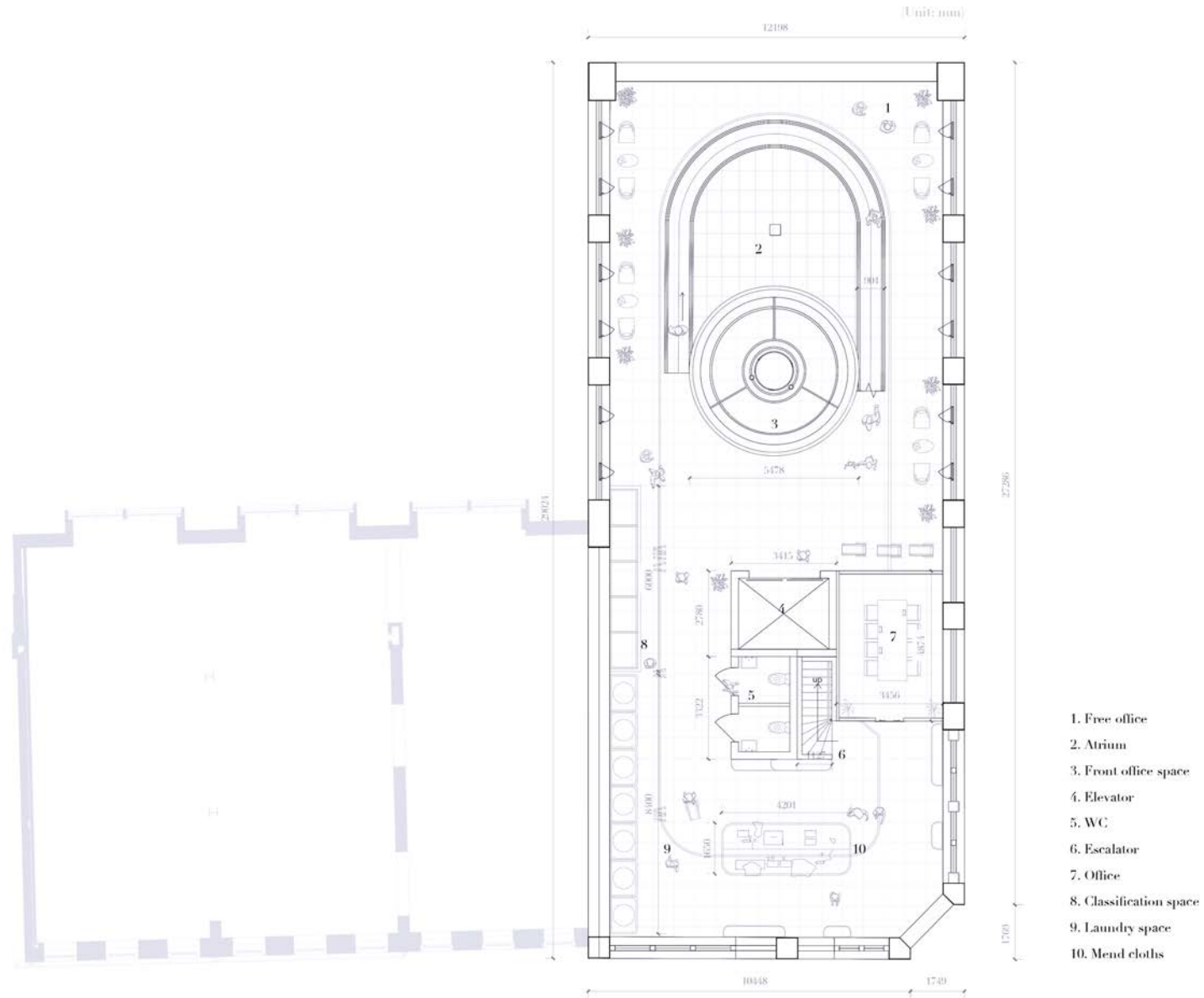




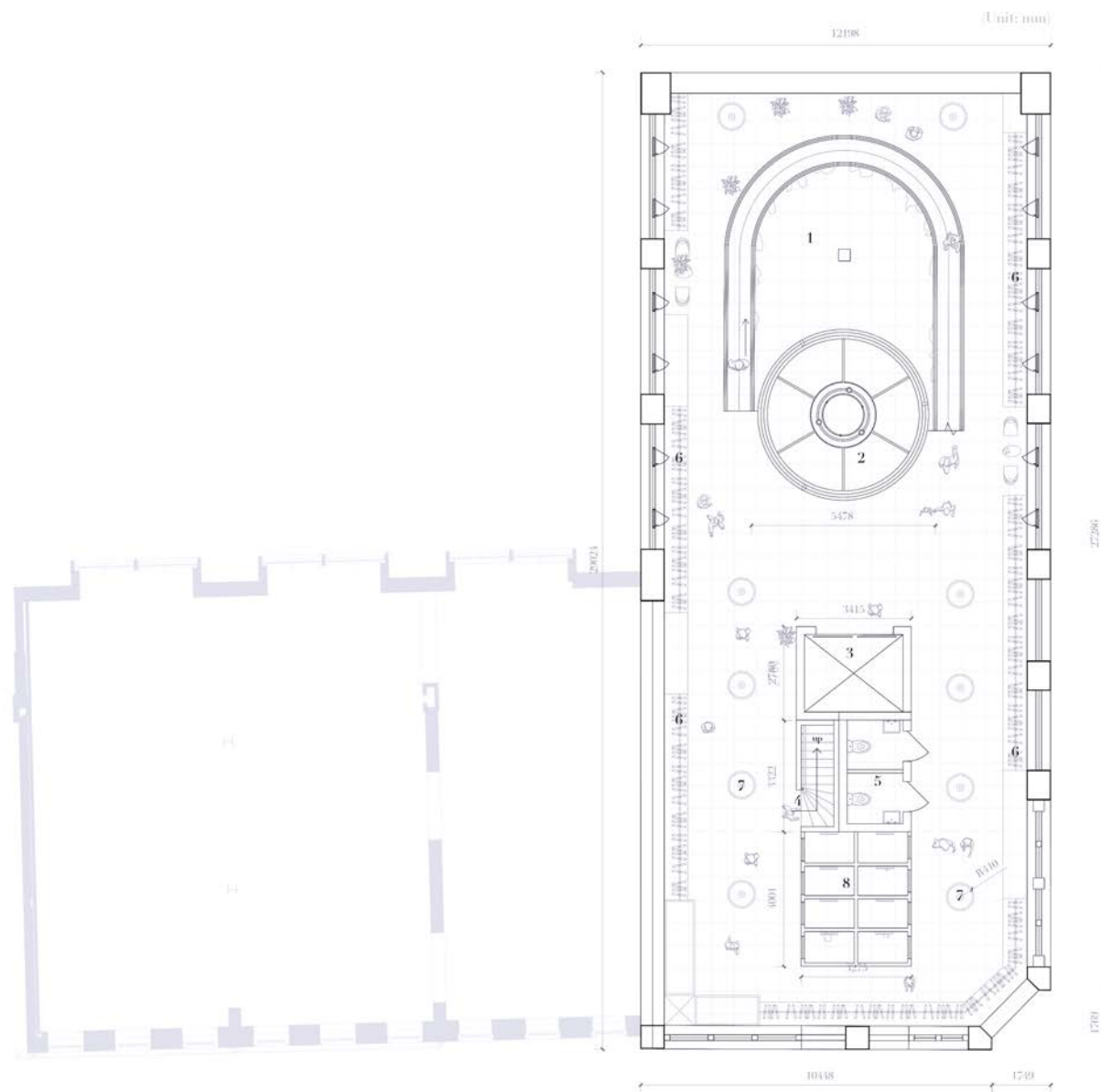
Ground Floor



First Floor

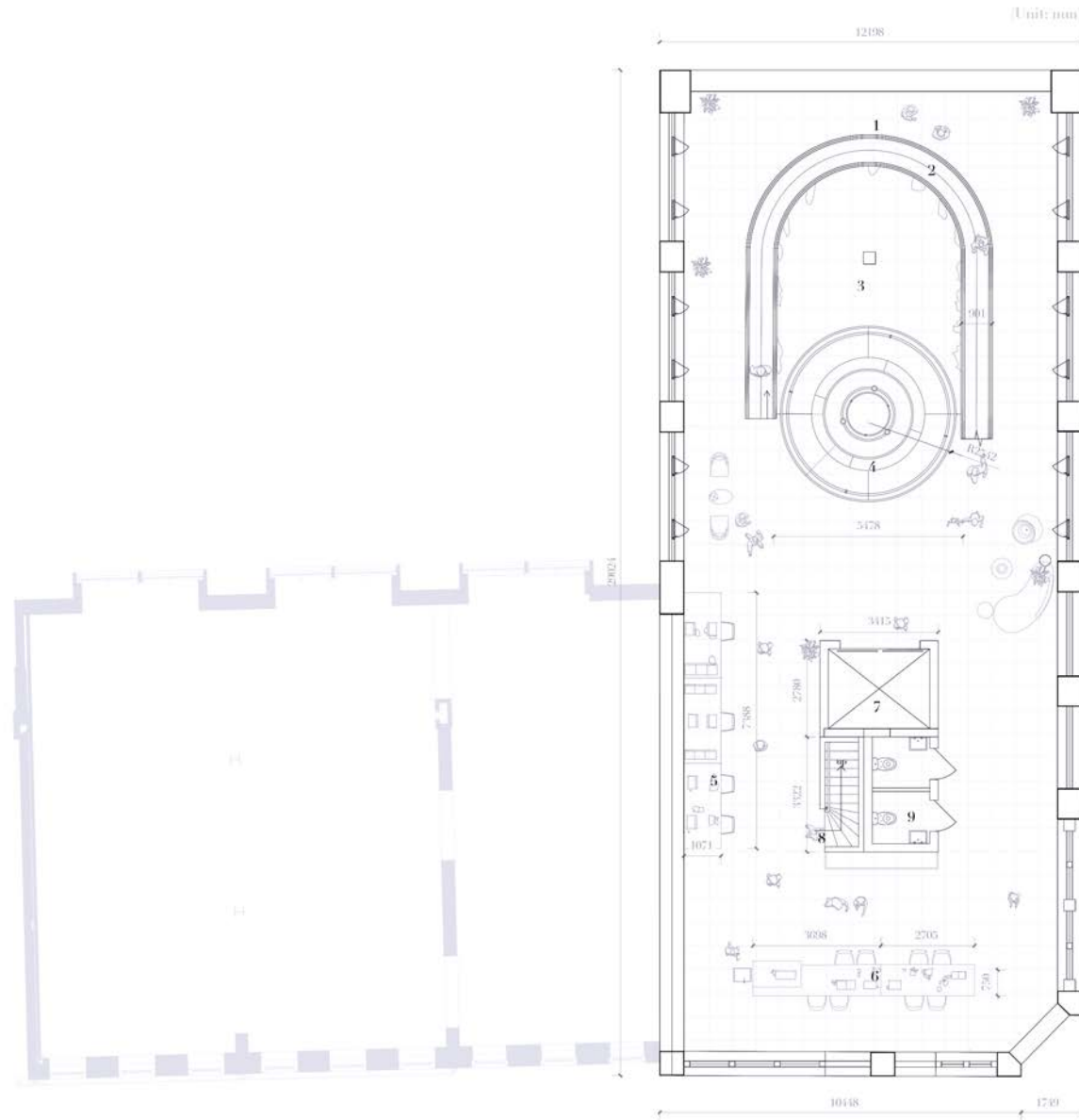


Second Floor



1. Hang up clothes
2. Front office space
3. Elevator
4. Escalator
5. WC
6. Sell
7. Show
8. Fitting room

Third Floor



1. Free office
2. Swivel ladder
3. Clothing device
4. Front office space
5. Clothing transformation space
6. Sewing machine
7. elevator
8. escalator
9. WC

5.0

Spatial Design Details





Spatial Device



Reception



Sorting Dirty Laundry Baskets / Professional Laundry Service



Ironing Area / Drying System



Clothing Retail (Expensive / Cheap)

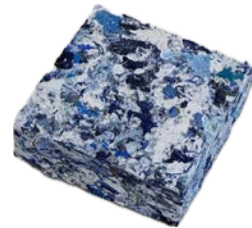


Workshop

7.0

Materials Palette

One of the important decorative materials: made from recycled old clothes, supported by the expertise of a professional studio—Fabbrick.



6.0

User Flow Display

The Clothing Bank Points System is designed to encourage community members to actively participate in clothing donations, volunteer services, environmental activities, and community events. Members can earn points through donating clothes, volunteering, using self-service laundry, recycling, and participating in community activities. These points can be used for trying on and purchasing clothes, exchanging for cash, and enjoying community privileges and discounts. The points system enhances resource efficiency, reduces waste, and continuously improves through transparent records and feedback mechanisms to better serve community members and promote the concept of sustainable development.

CLOTHING BANK POINTS SYSTEM USER MANUAL

Table of Contents

Introduction & Purpose 02

1. Earning Points 03

1.1 Clothing Donation 03

1.2 Volunteer Service 03

1.3 Self-Service Laundry 03

1.4 Recycling 03

1.5 Community Activity Participation 03

2. Using Points 04

2.1 Trying on Clothes 04

2.2 Purchasing Clothes 04

2.3 Redemption Limits 04

3. Transparency and Feedback Mechanism 05

3.1 General Rules 05

3.2 Point Expiration 05

3.3 Microbar and Penalties 05

3.4 Redemption Limits 05

Introduction & Purpose

The purpose of the Clothing Bank Points System is to promote the concept of sustainable fashion by encouraging community members to actively participate in clothing donation, volunteer service, environmental protection, and recycling activities. Through the integration of a digital point system, the goal is to create a virtuous cycle of giving and receiving, thereby reducing textile waste and promoting a more sustainable fashion industry. This program supports various brands, encourages fair wages, and empowers consumers through transparency and feedback mechanisms, ensuring the integrity of the system and the trust of the community. It aims to address the growing issue of clothing waste, which is not only a significant environmental concern but also a social responsibility and consumer awareness issue.

- ## 1. Earning Points
- 1.1 Clothing Donation: 100°
- 1.2 Volunteer Service: 30°/hour
- 1.3 Self-Service Laundry: 20°/use
- 1.4 Recycling: 10°/kg
- 1.5 Community Activity Participation: 50°/event
- 1.6 Community Privileges and Discounts: 40°/event

- 1.7 Clothing Donation: 100°, 70°, 50°
- 1.8 Volunteer Service: 30°/hour
- 1.9 Self-Service Laundry: 20°/use
- 1.10 Recycling: 10°/kg
- 1.11 Community Activity Participation: 50°/event
- 1.12 Community Privileges and Discounts: 40°/event

- 1.3 Self-Service Laundry: 20°/use
- 1.4 Recycling: 10°/kg
- 1.5 Community Activity Participation: 50°/event
- 1.6 Community Privileges and Discounts: 40°/event

- 1.7 Clothing Donation: 100°, 70°, 50°
- 1.8 Volunteer Service: 30°/hour
- 1.9 Self-Service Laundry: 20°/use
- 1.10 Recycling: 10°/kg
- 1.11 Community Activity Participation: 50°/event
- 1.12 Community Privileges and Discounts: 40°/event

- 2.1 Trying on Clothes: 2°/trial
- 2.2 Purchasing Clothes: 500°, 350°, 200°

- 2.3 Redemption Limits: 2000°

2.3 Redemption Limits

Users can redeem a maximum of 2000° per year for clothing items. Excess points will expire at the end of the year.

3. Transparency and Feedback Mechanism

The points system is designed to promote community members to actively participate in donation, purchase and recycling activities, provide the correct of sustainable fashion and community support through transparency. Feedback is always welcome and encouraged.

4. Rules and Guidelines

4.1 General Rules: Points are earned through various activities and can be used to try on or purchase clothing items. Points do not expire.

4.2 Point Expiration: Points earned through various activities will expire at the end of the year.

4.3 Microbar and Penalties

Users are encouraged to use their points responsibly and avoid excessive spending. Excessive spending may result in penalties.

Points System Design

I designed an app for Clothing Bank to assist in community operations and management. The main features of this app include:

Map and Navigation: Provides maps and navigation services for Clothing Bank, helping users easily locate various branches and service points.

Online Shopping: Allows users to browse and purchase items online, offering a convenient shopping experience.

Laundry Booking: Provides laundry booking services, enabling users to efficiently schedule laundry times.

Online Courses: Users can register for and participate in various online courses to enhance their life skills.

Community Sharing: Offers a platform for residents to share and interact online, promoting engagement and connection.

Points and Rankings: Users can earn points by participating in activities and completing tasks, and view their ranking on the leaderboard.

Personal Account: Each user has a personal account to manage and view their information, points, and activity records.

This app aims to enhance community participation in the daily operations and activities of Clothing Bank, fostering a stronger sense of community cohesion.

CLOTHING BANK

