

WINDING VAULTS DARKSPACE

XIHE CHEN





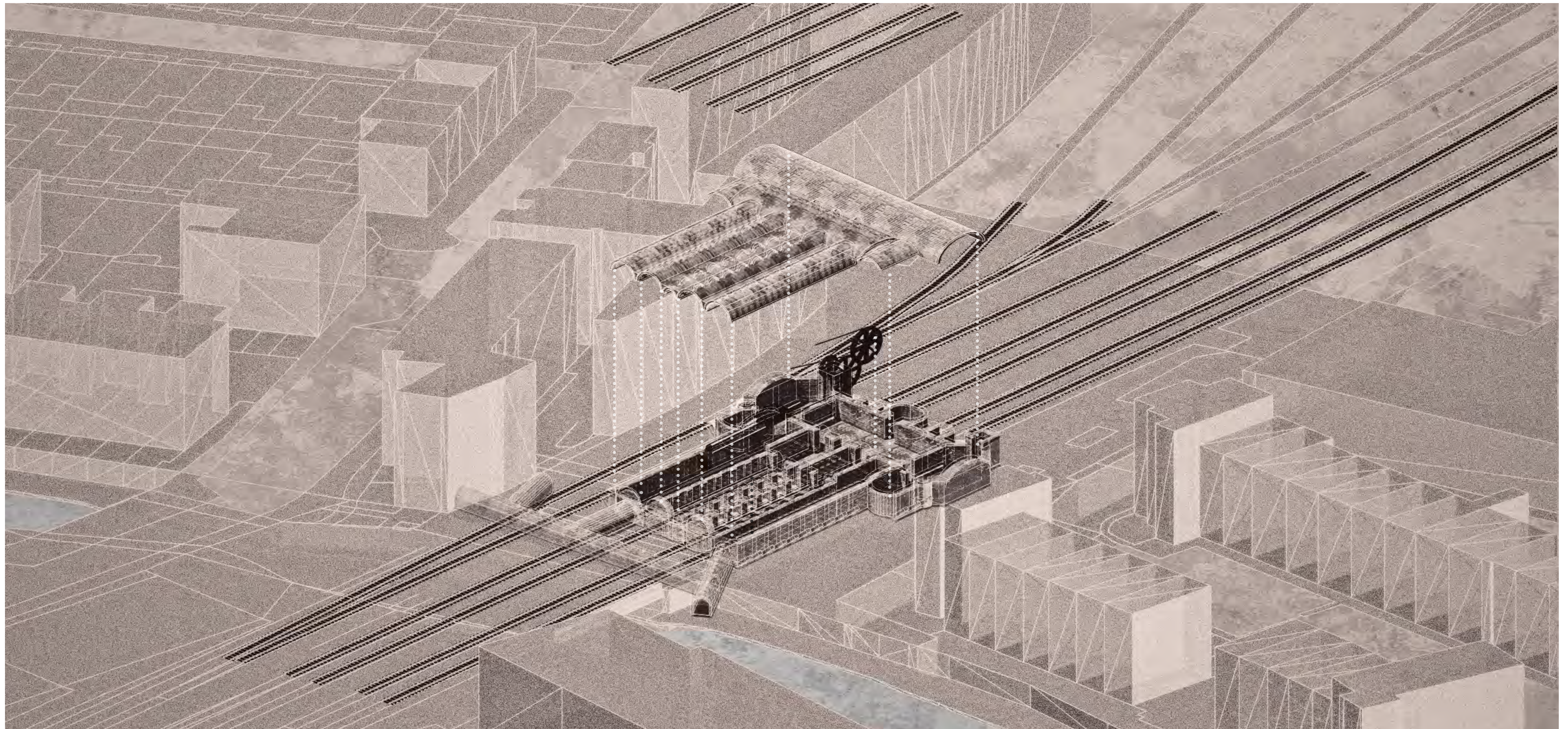
JOHN COOKE BOURNE
APRIL 1837

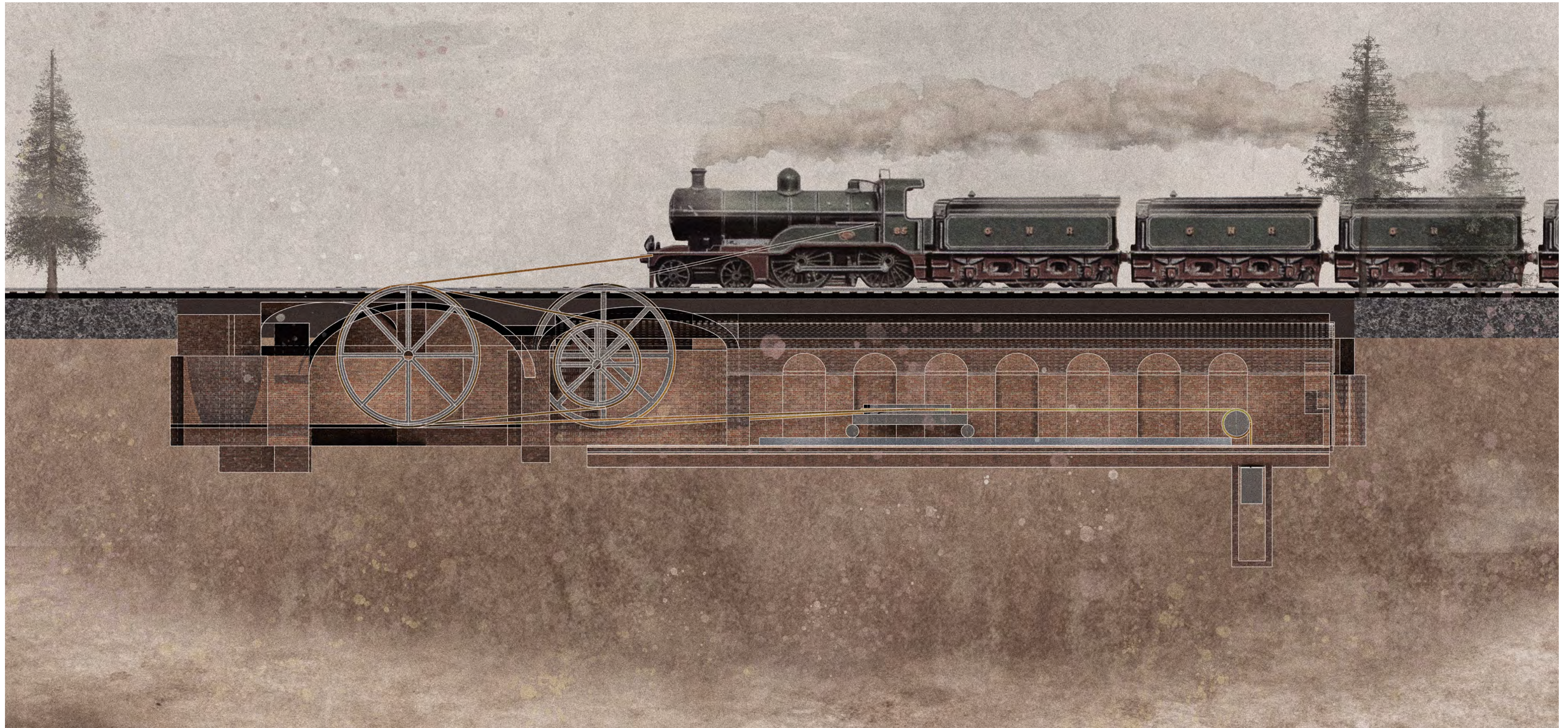
THE STATIONARY WINDING ENGINE VAULTS

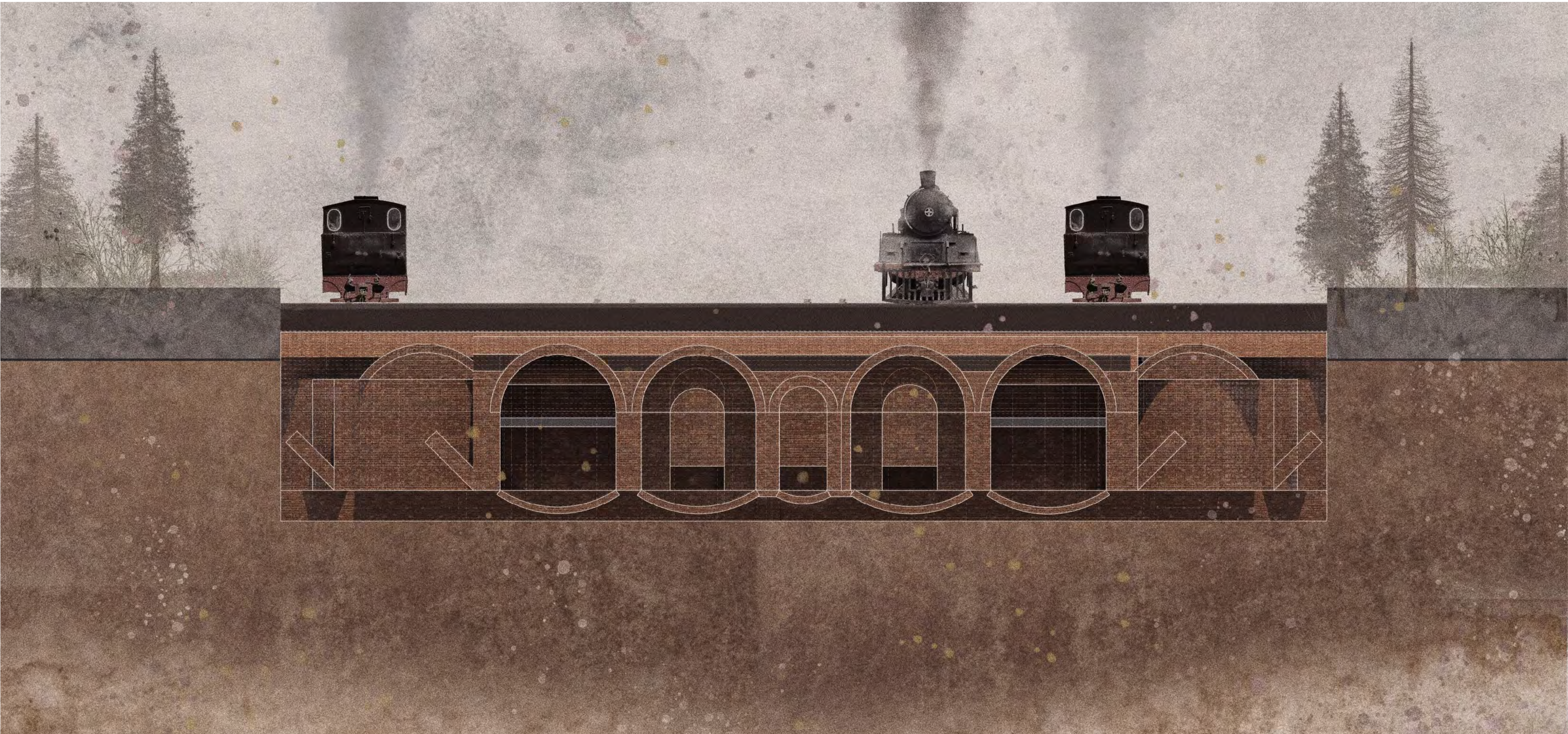


It located under the main line north of Fitzroy Bridge.











CONTEXT & OBSERVATION



CONTEXT

The stationary winding engine vaults is near the region canal, behind the wall illuminated by blue light.



CAMDEN TOWN

The roughness, scruffiness of camden makes young peopel feel more free.





2000



2020

MUSIC VENUES REDUCED



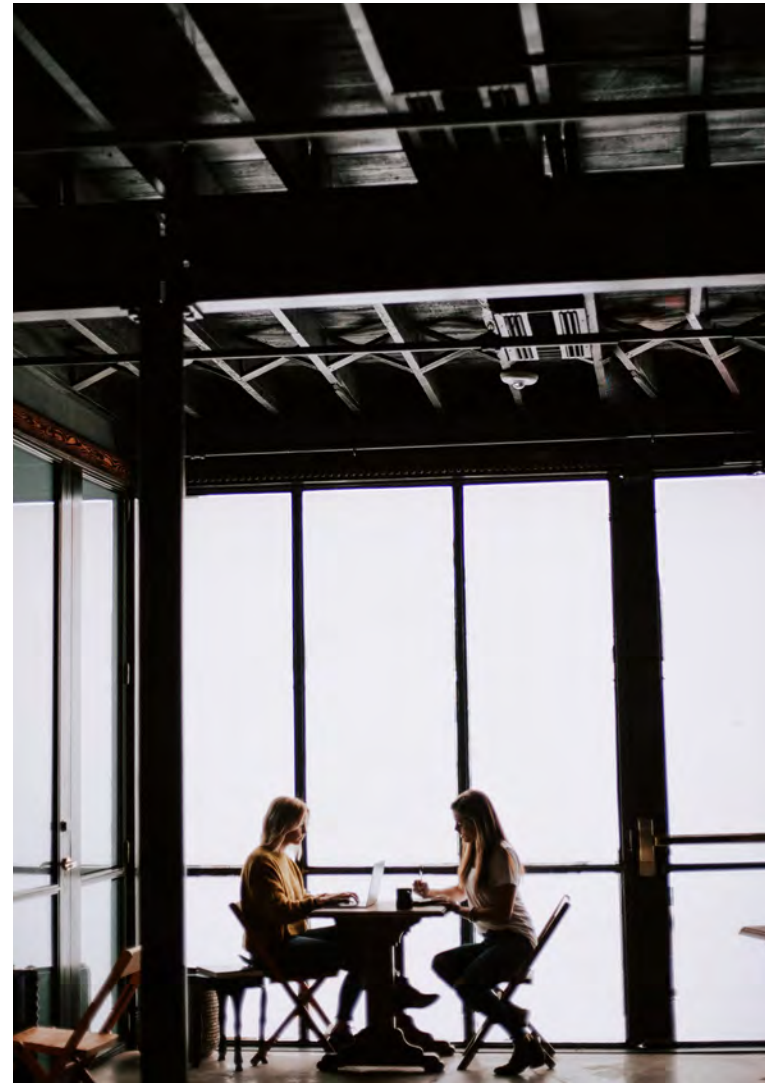
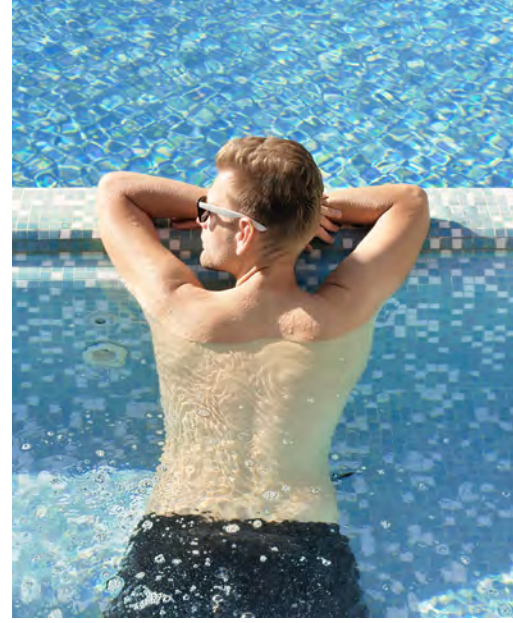
Between 2005 and 2020 the number of music venue in the Camden nearly halved.



DAY & NIGHT

Some public space like music venue bar and club only back to alive at night.

DAY & NIGHT





INTERIOR PHOTOS



The Stationary Winding Engine Vaults

The stationary winding engines started service on 1837 end in 1844.



The Stationary Winding Engine Vaults

However, after just 7 years, due to developments of the steam engine, effectively making the need for rope haulage redundant.



INSPIRATION

**The Stationary Winding
Engine Vaults**

6.30 — TUESDAY, 23rd MARCH — 8.45
TWO PERFORMANCES ONLY

NIGHT ONLY

XIHE CHEN PRESENTS

FOLLOW DARKNESS

FREEDOM

AT NIGHT

THE MUSIC
VENUE
FOR
YOUTH



THE LIFE

AT

NIGHT

IMPORTANCE
OF
FREEDOM AT NIGHT

LIVE LIVE LIVE LIVE LIVE
LIVE LIVE LIVE LIVE LIVE
LIVE LIVE LIVE LIVE LIVE
LIVE LIVE LIVE LIVE LIVE
LIVE LIVE LIVE LIVE LIVE
LIVE LIVE LIVE LIVE LIVE

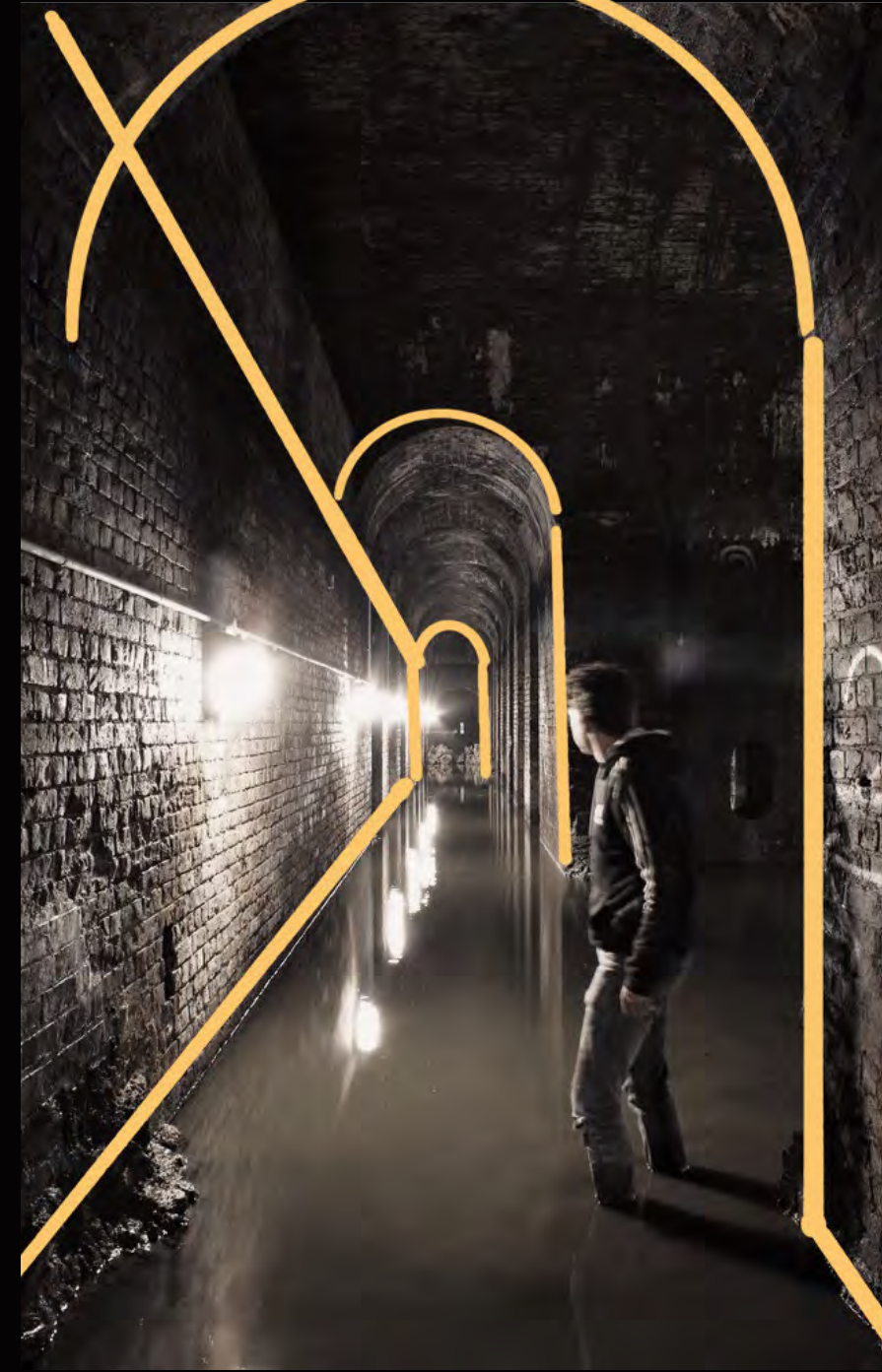


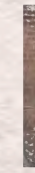
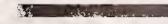
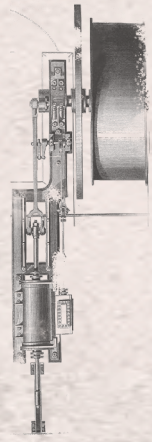
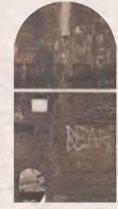
PUBLIC SPLACE IN NIGHT TIME
IN DAY TIME



The Music venue in Stationary Winding Engine Vaults

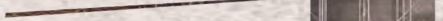
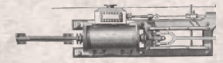
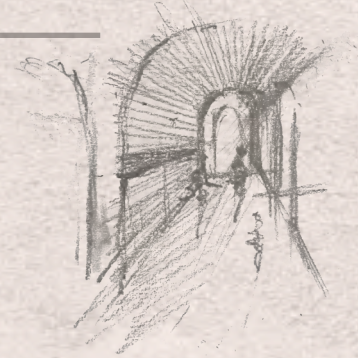
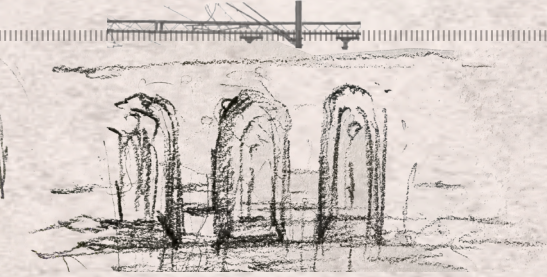
Address: Chalk Farm Rd, Camden Town, London NW1 8AA





252

THE ENGINEER

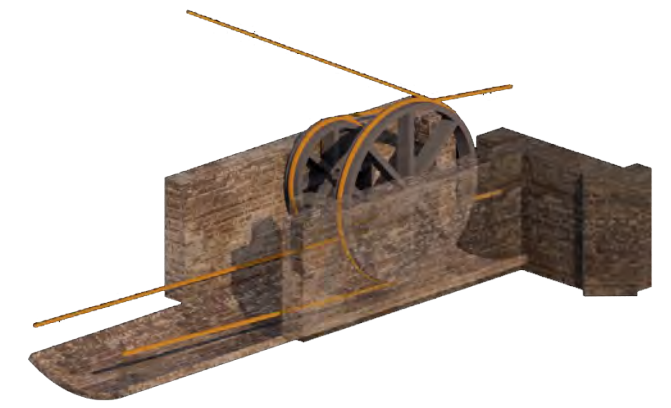
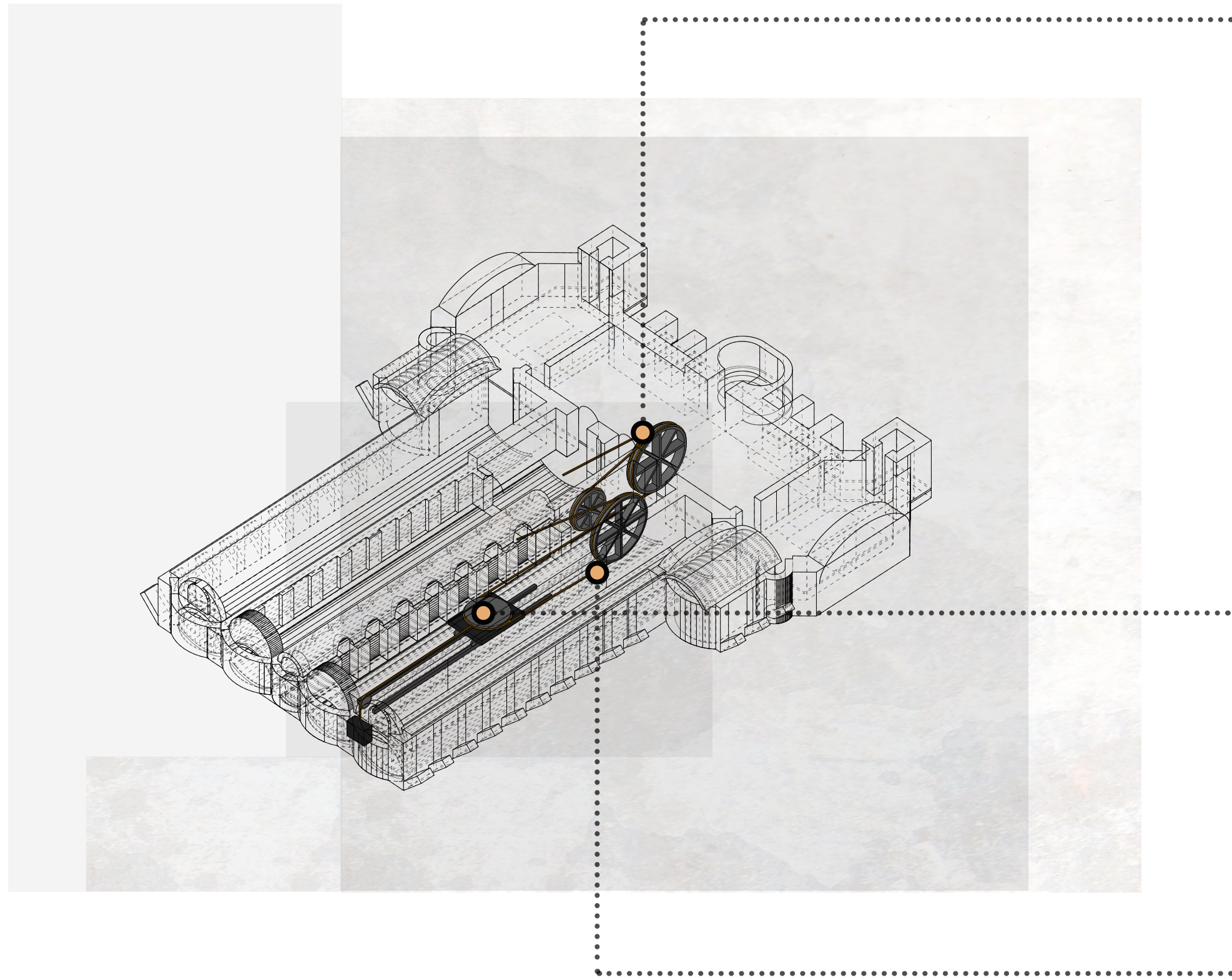


THE ENGINEER



CASTELVECCHIO MUSEUM

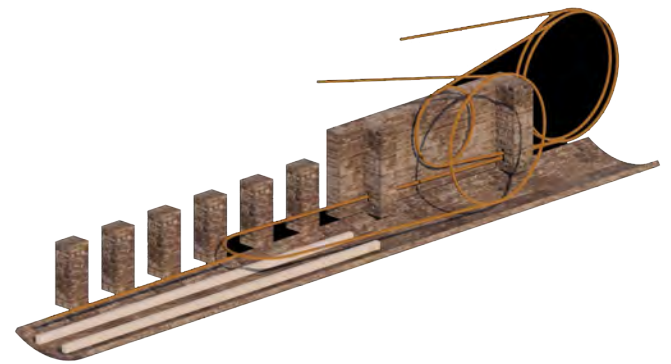
CARLO SCARPA



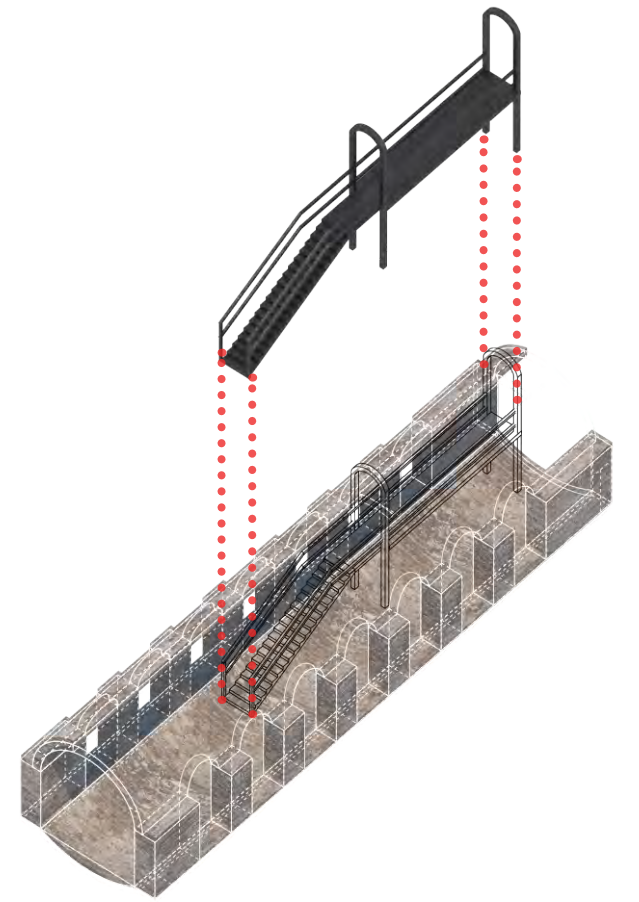
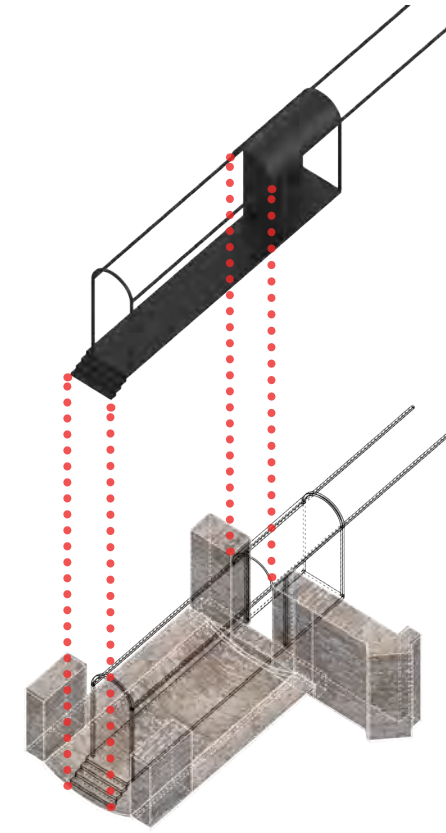
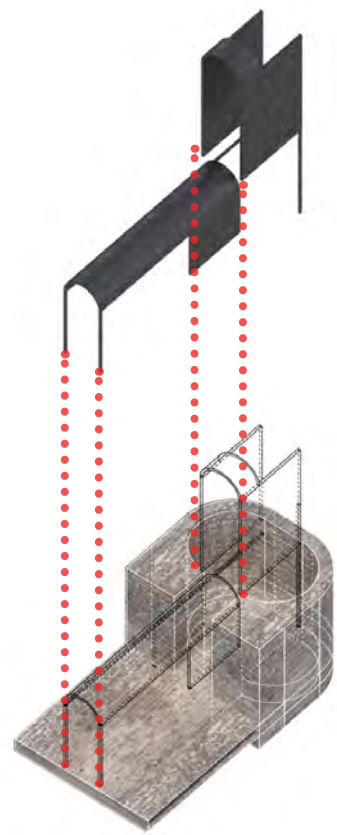
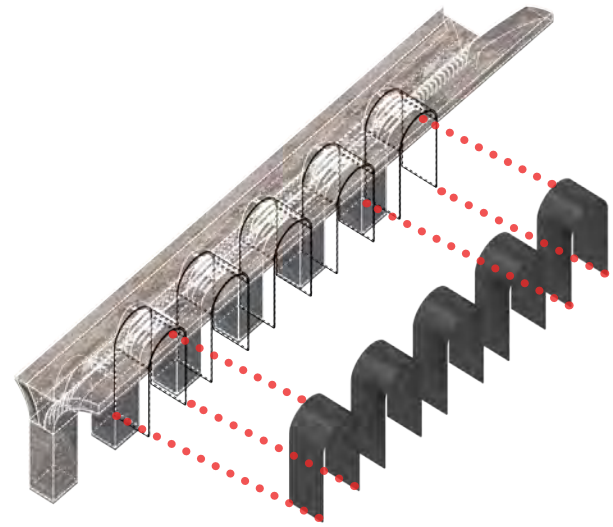
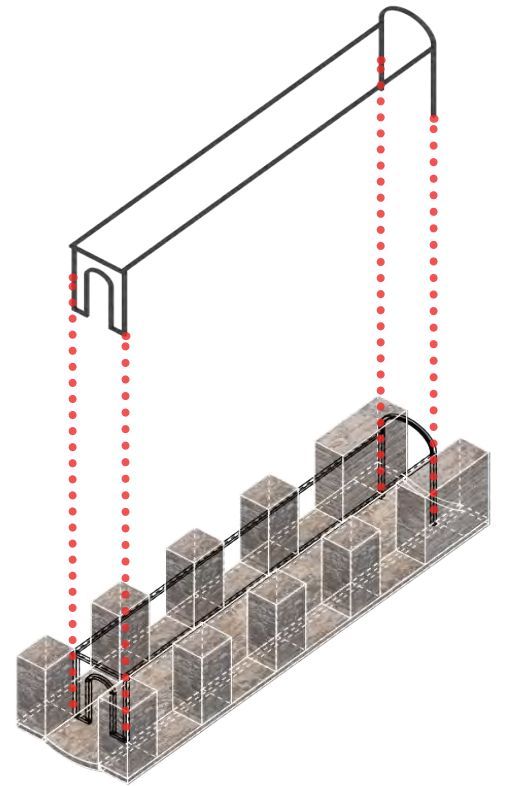
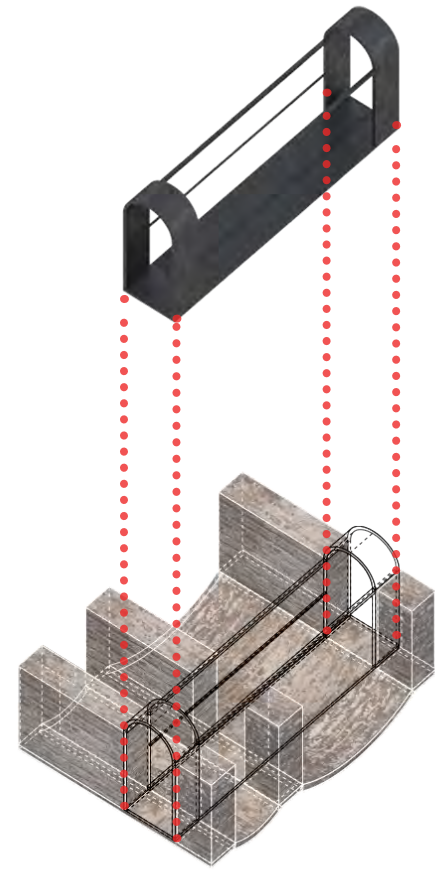
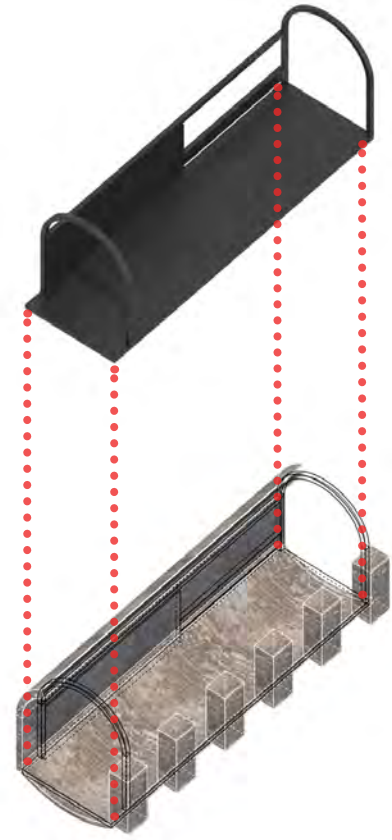
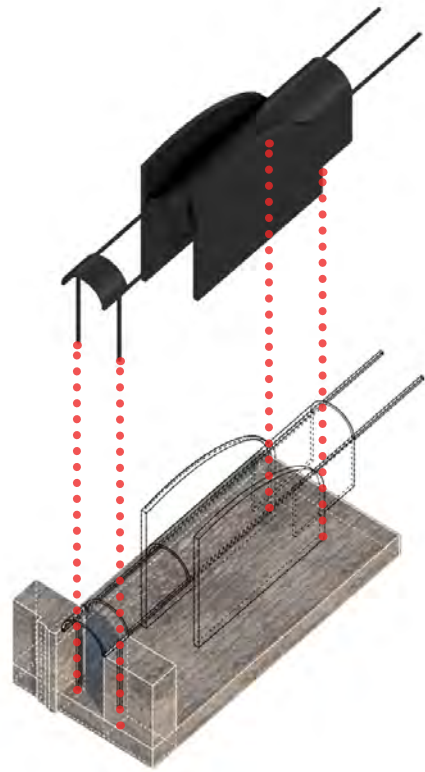
Wheels & pulley

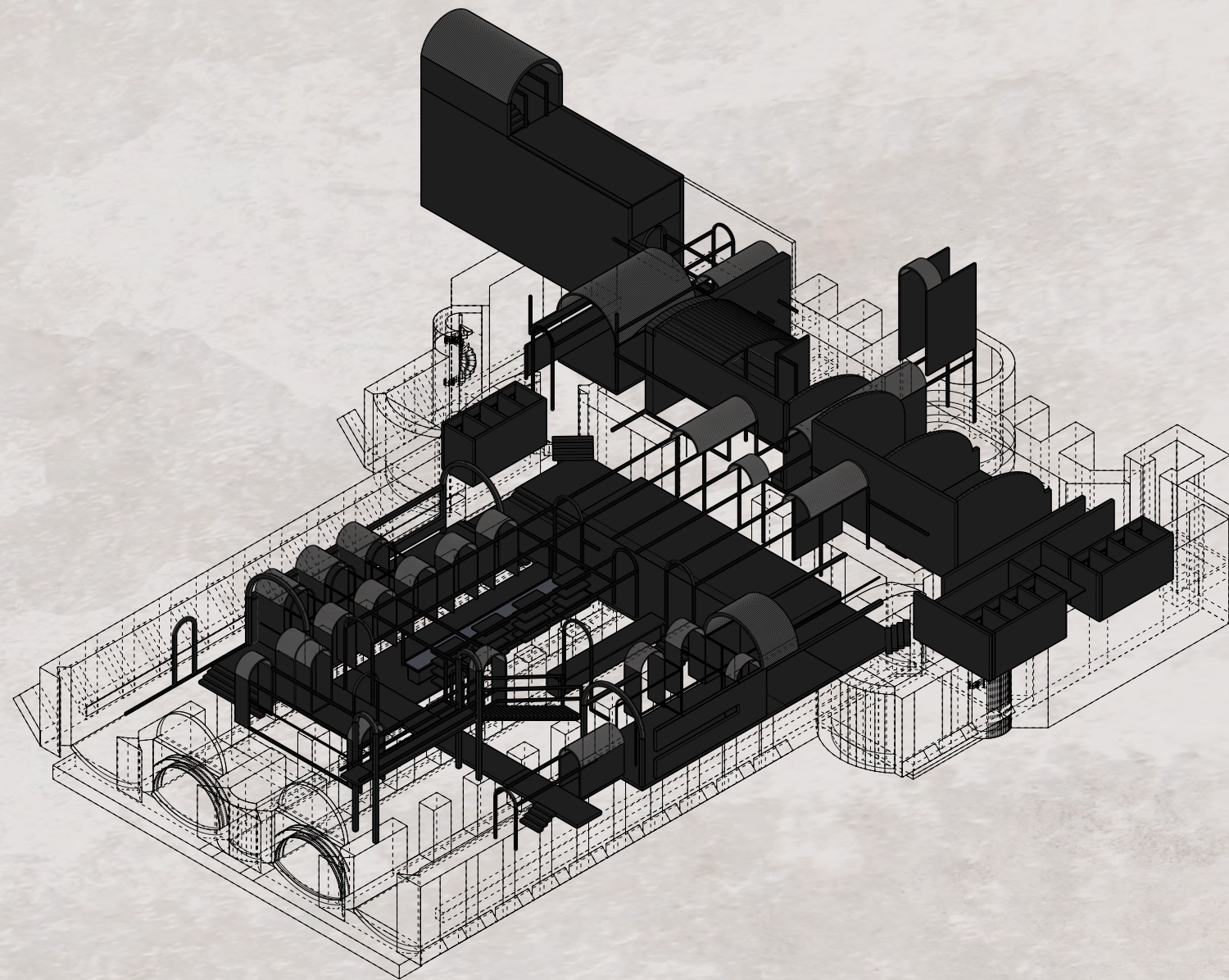
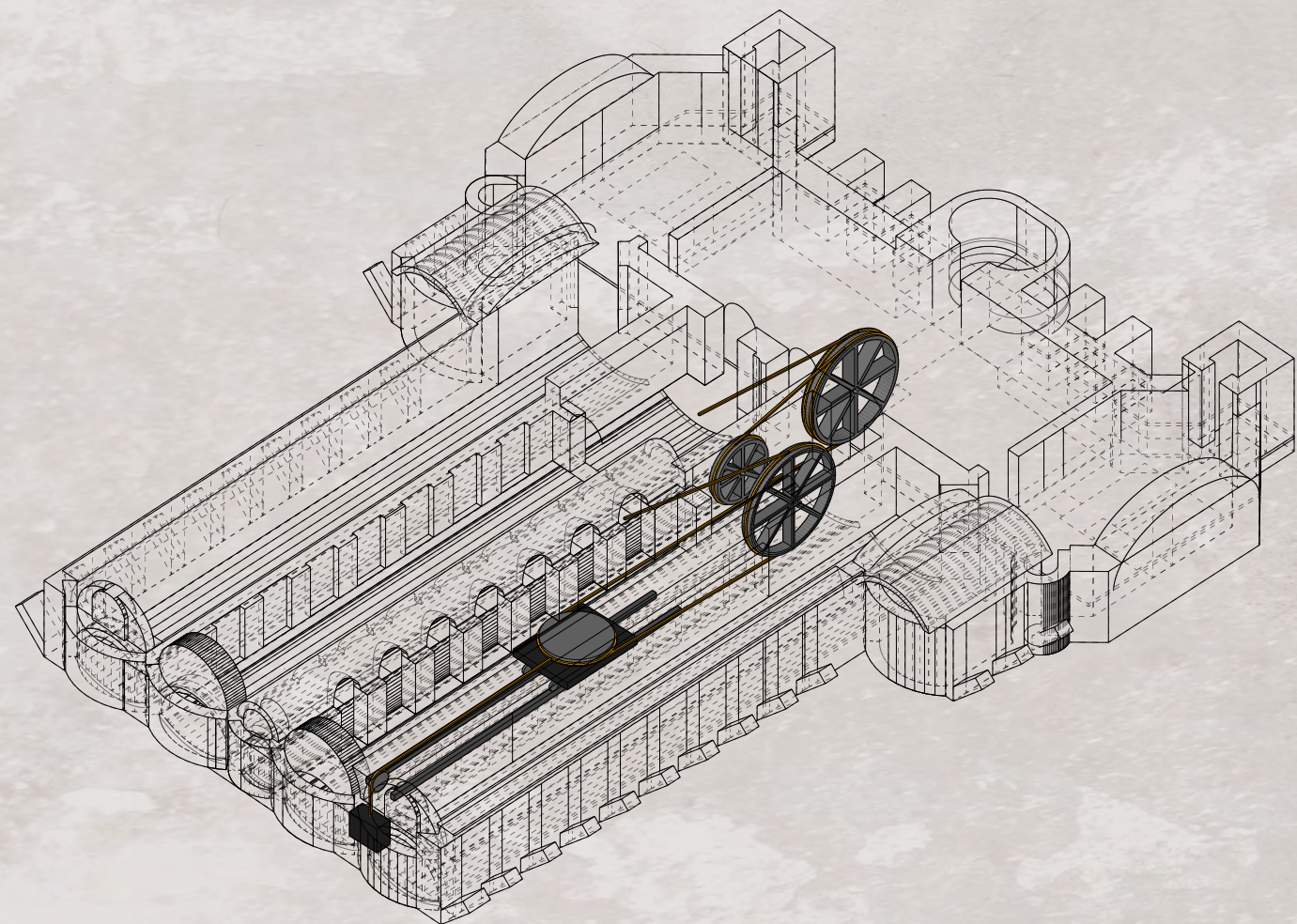


Transmission structure



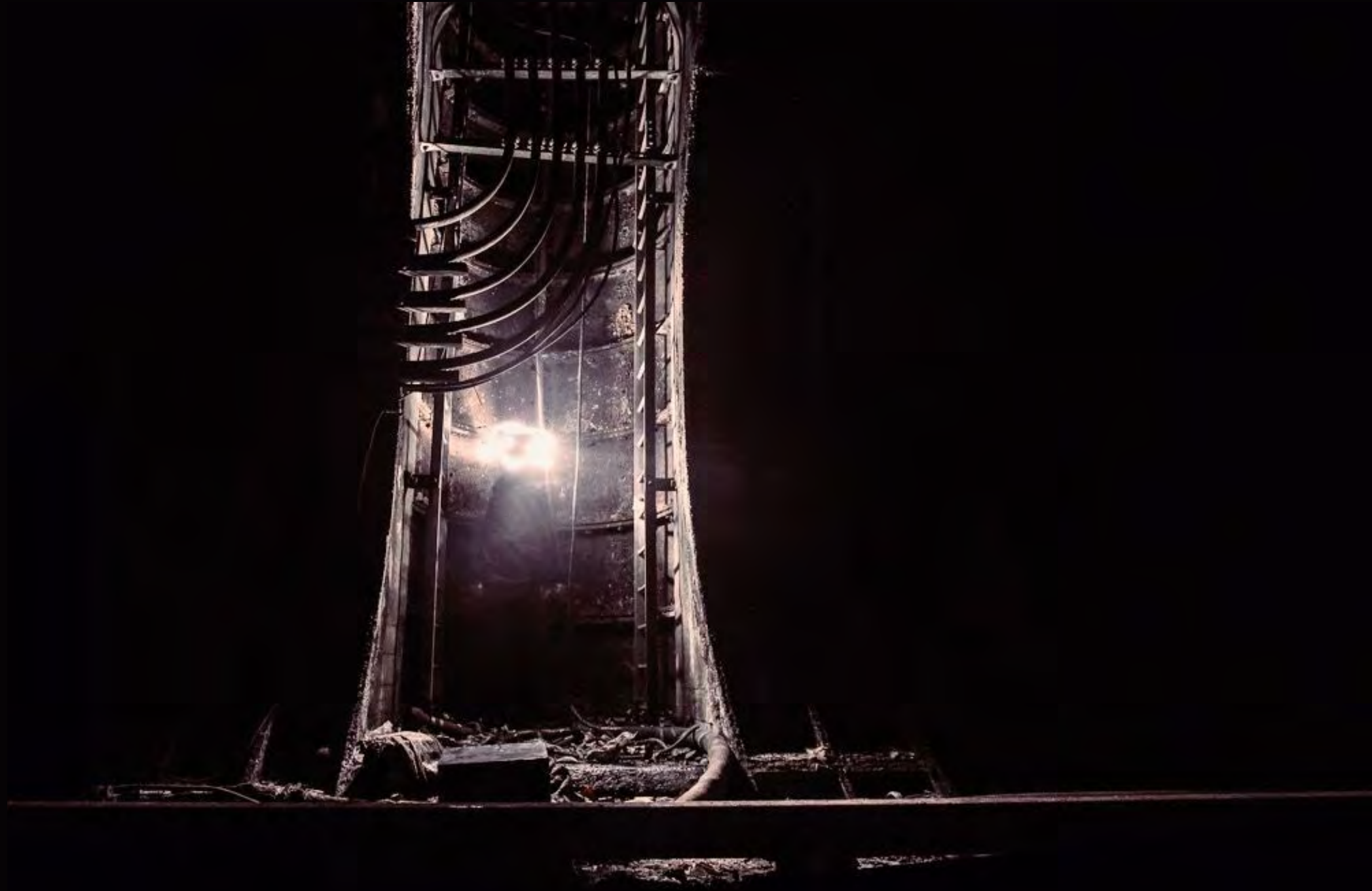
Rope





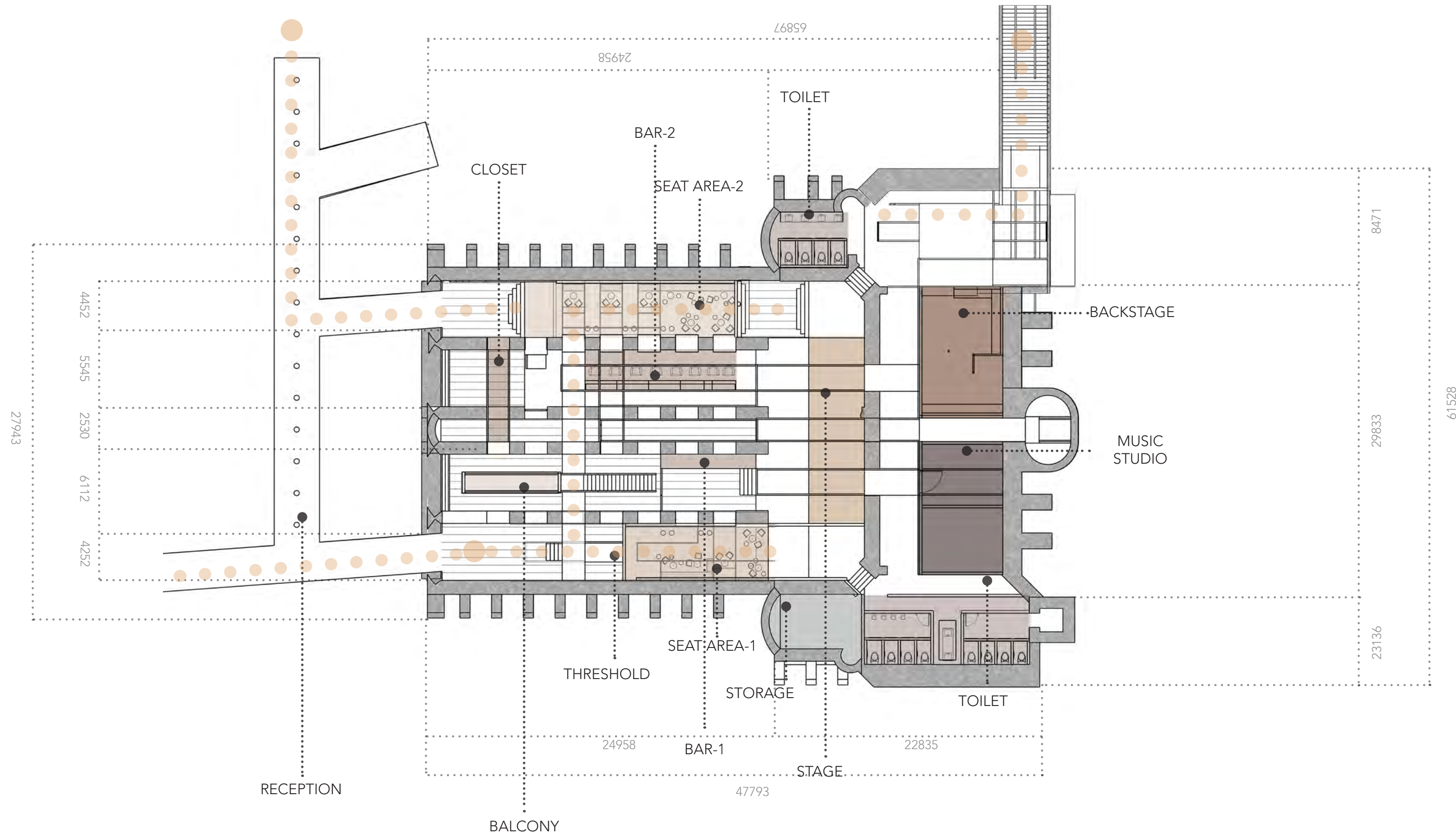
EXISTING

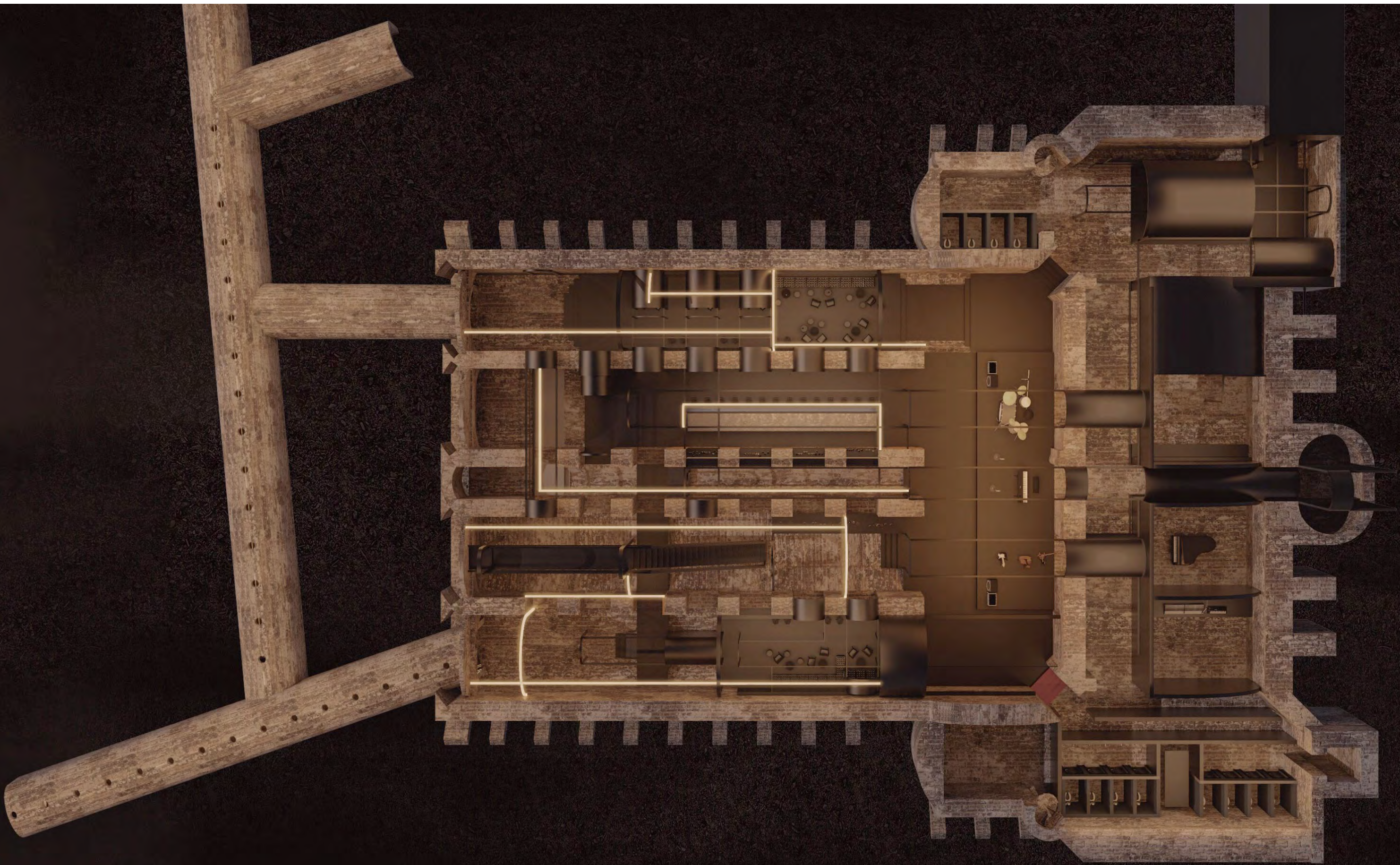
NEW



STRATEGY

FUNCTION DIVISION OF SPACE & MOVING LINE

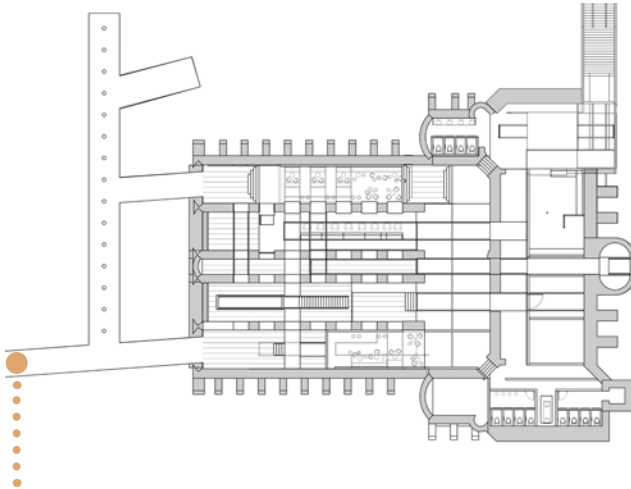






ENTRANCE

Coal supply channel

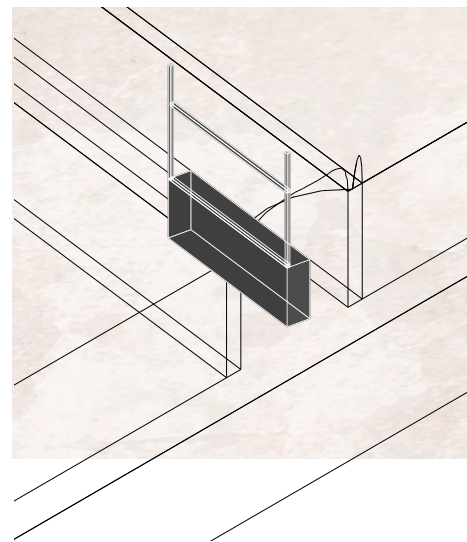


Existing entrance



ENTRANCE

Coal supply channel

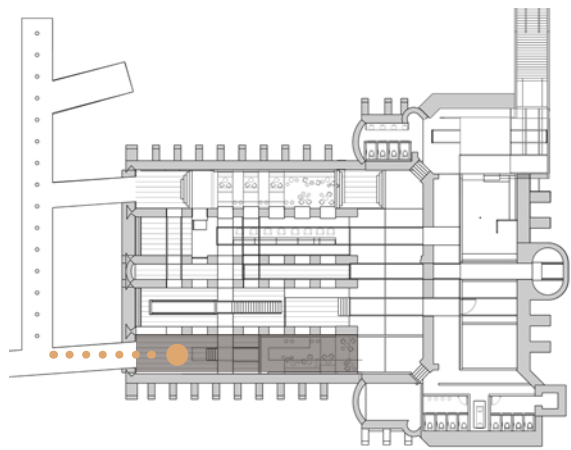
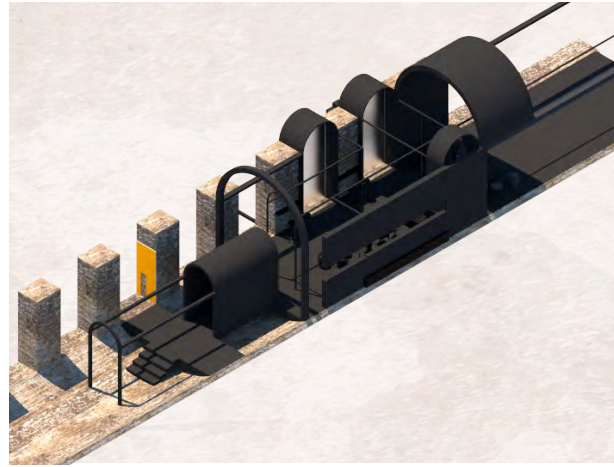


RECEPTION



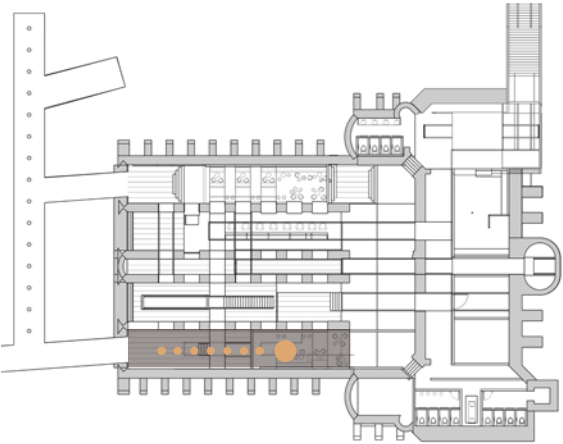
THRESHOLD

Coal store vault

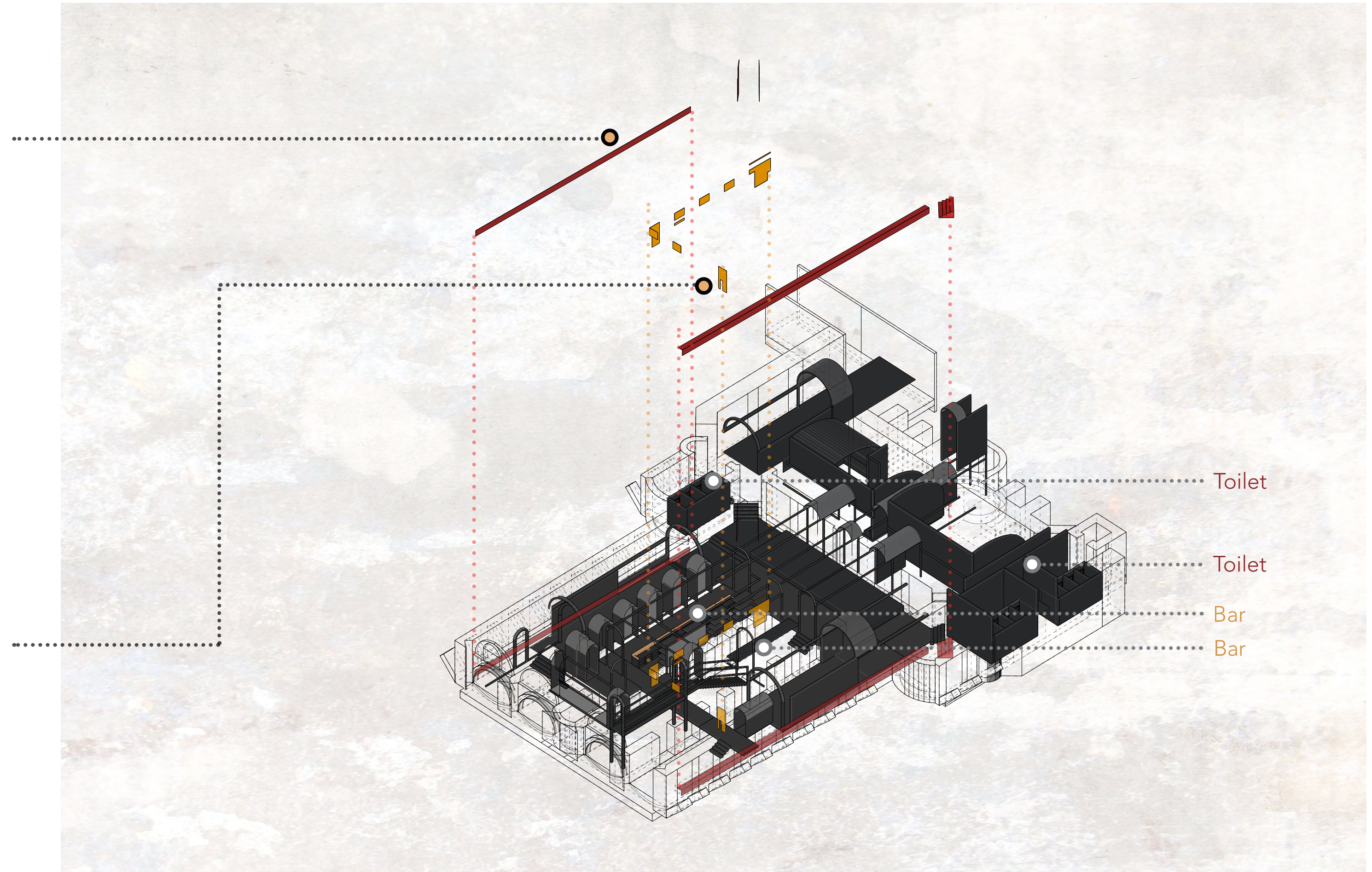


SITTING AREA -1

Coal store vault

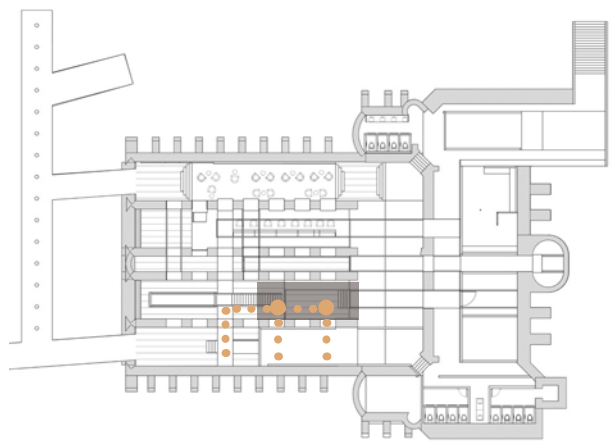
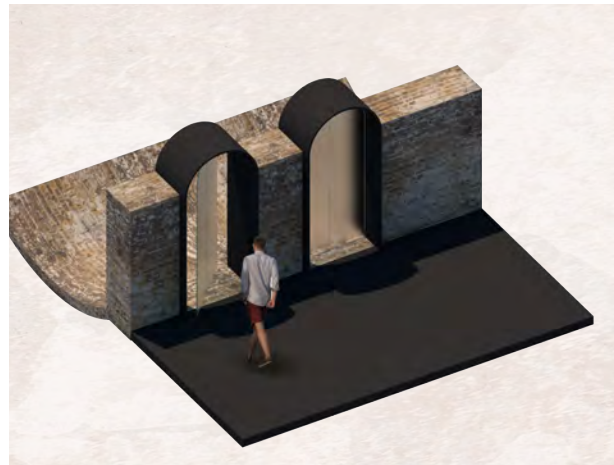


COLOR NAVIGATION



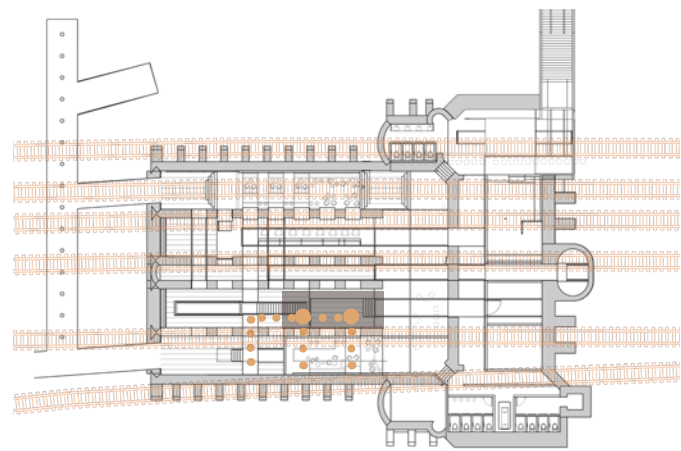
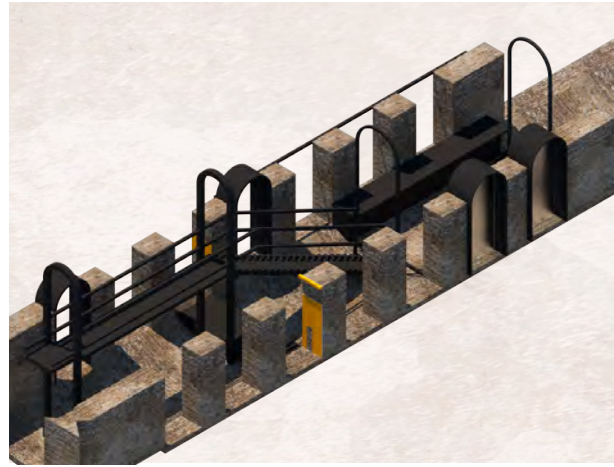
BAR - 1

Rope system vault



BALCONY

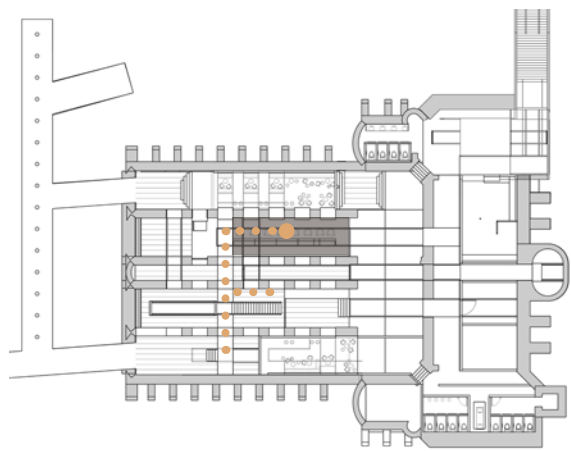
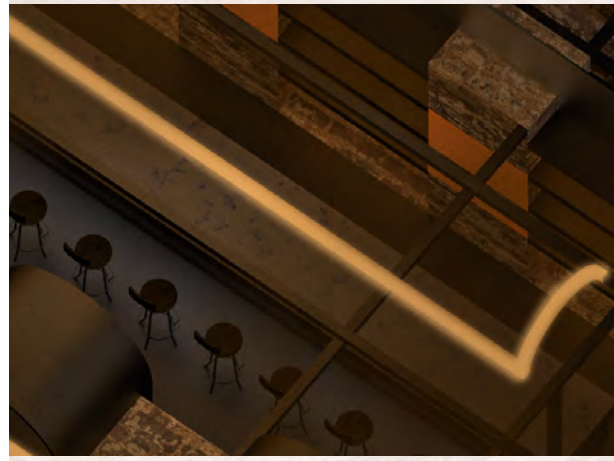
Rope system vault





BAR - 2

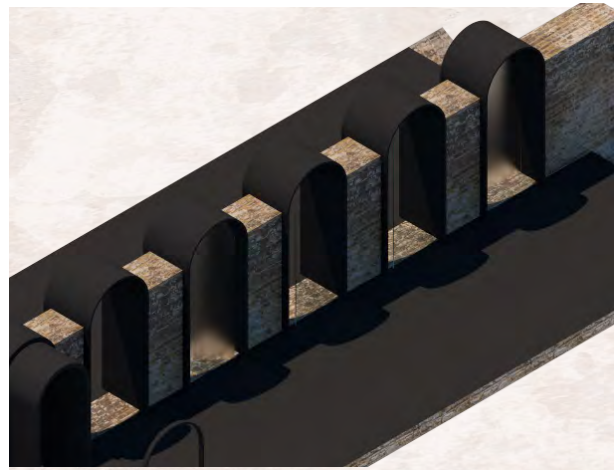
Rope system vault



BAR - 2

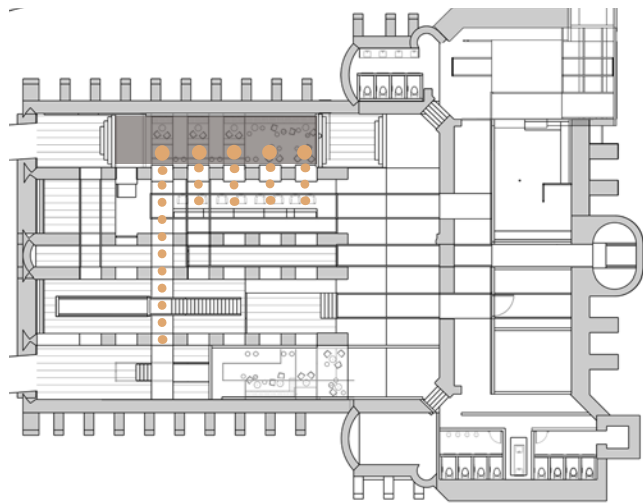
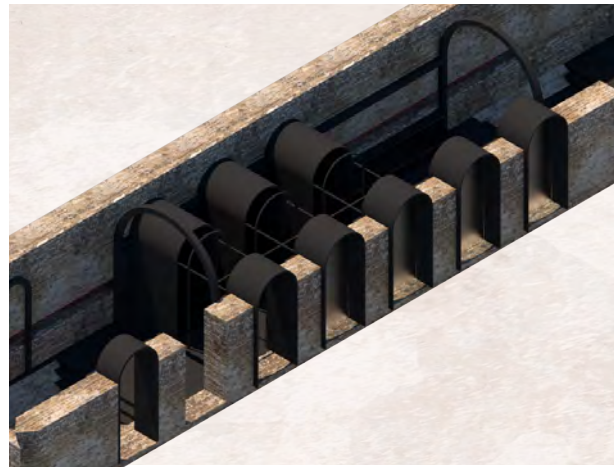
.

Rope system vault



SITTING AREA -2

Coal store vault



SITTING AREA -2

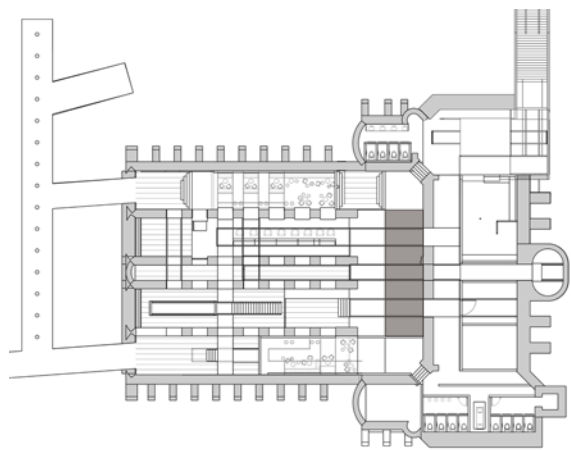
Coal store vault





STAGE

The Sheave Room





MUSIC CAMPS FOR KIDS
AGES 6-9



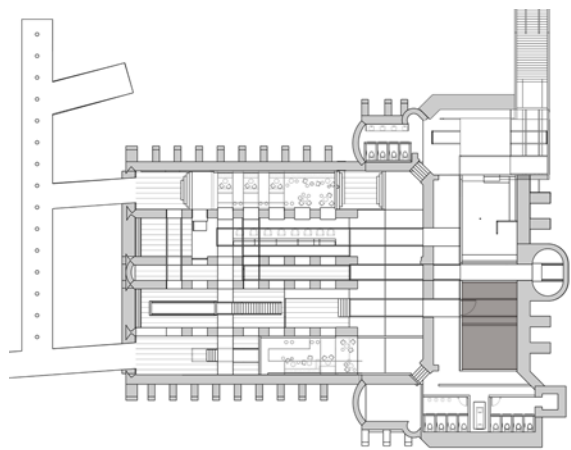
MUSIC CAMPS FOR TEENS
AGES 10-17



MUSIC CAMPS FOR ADULTS
AGES 18+

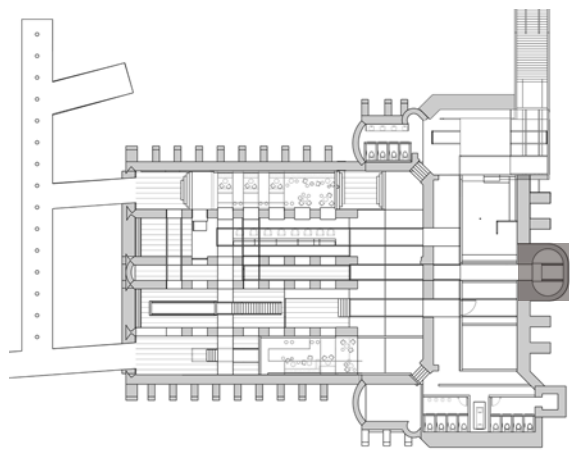
MUSIC STUDIO

The Main Engine Room



SECRET CORNER

The Main Engine Room





WINDING VAULTS DARKSPACE

XIHE CHEN

